

TREE SURVEY PLAN




15/00260/AS

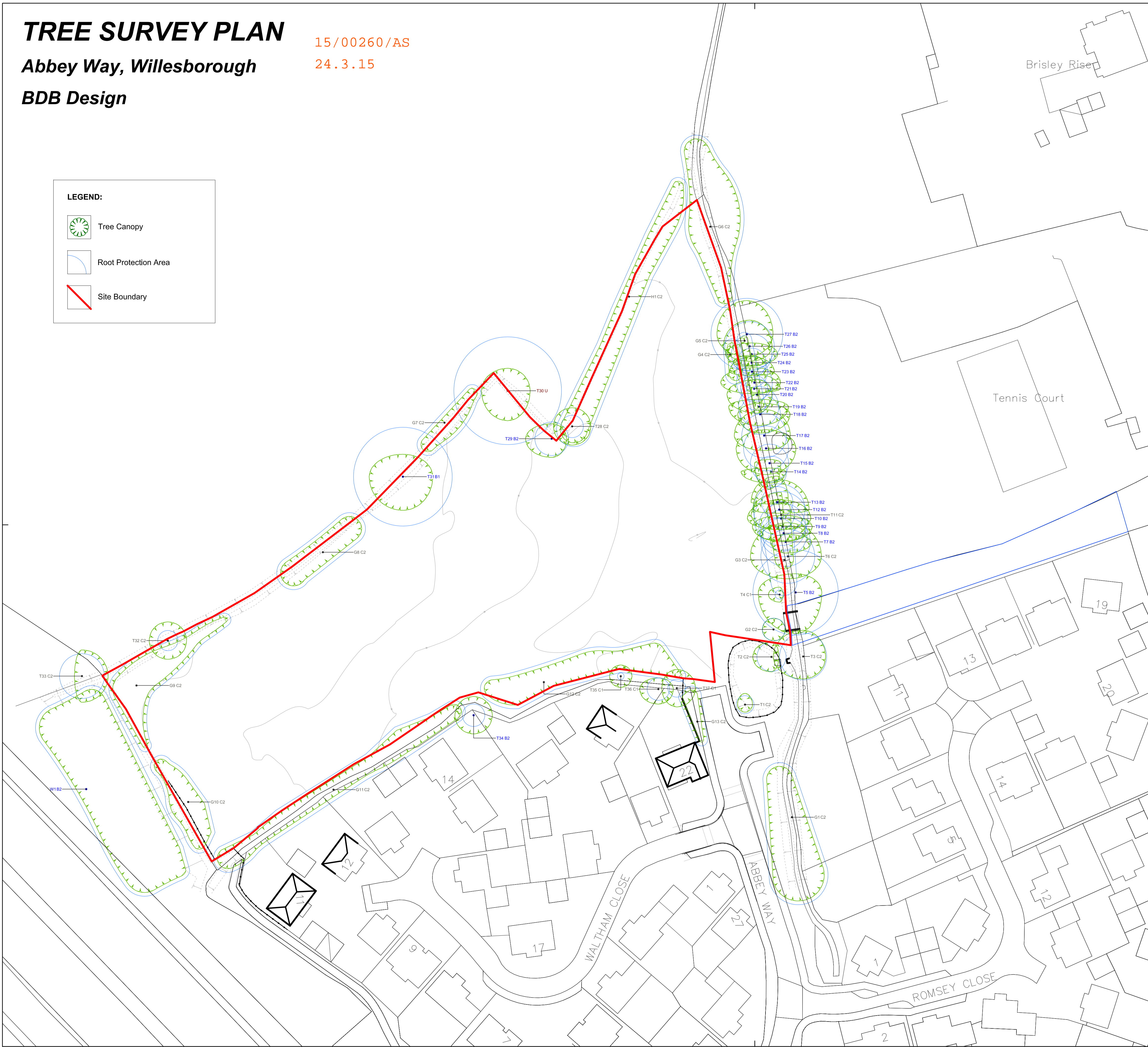
24.3.15

Abbey Way, Willesborough

BDB Design

LEGEND:

-  Tree Canopy
-  Root Protection Area
-  Site Boundary



Tree Survey Schedule

Ref.	Species	Height	Stem	B.S. Cat.
T1	Goat willow	5m	0.080; 0.080; 0.080; 0.080; 0.080; 0.080m	C2
T2	Goat willow	7m	0.120; 0.180; 0.200; 0.150m	C2
T3	Common Ash	14m	0.350; 0.400m	C2
T4	Hawthorn	4m	0.1m	C1
T5	Hybrid black poplar	17m	0.96m	B2
T6	Hybrid black poplar	16m	0.6m	C2
T7	Hybrid black poplar	17m	0.55m	B2
T8	Hybrid black poplar	17m	0.52m	B2
T9	Hybrid black poplar	17m	0.52m	B2
T10	Hybrid black poplar	17m	0.6m	B2
T11	Oak	8m	0.3m	C2
T12	Hybrid black poplar	18m	0.58m	B2
T13	Hybrid black poplar	17m	0.35m	B2
T14	Hybrid black poplar	16m	0.35m	B2
T15	Hybrid black poplar	17m	0.42m	B2
T16	Hybrid black poplar	17m	0.5m	B2
T17	Hybrid black poplar	16m	0.49m	B2
T18	Hybrid black poplar	16m	0.45m	B2
T19	Hybrid black poplar	17m	0.45m	B2
T20	Hybrid black poplar	17m	0.35m	B2
T21	Hybrid black poplar	16m	0.3m	B2
T22	Hybrid black poplar	17m	0.39m	B2
T23	Hybrid black poplar	17m	0.36m	B2
T24	Hybrid black poplar	17m	0.32m	B2
T25	Hybrid black poplar	17m	0.45m	B2
T26	Hybrid black poplar	17m	0.55m	B2
T27	Hybrid black poplar	16m	0.8m	B2
T28	Ash	8m	0.26m	C2
T29	Oak	7m	0.38m	B2
T30	Ash	9m	1.2m	U
T31	Oak	15m	1.11m	B1
T32	Goat willow	8m	0.080; 0.080; 0.080; 0.080; 0.080; 0.080m	C2
T33	Ash	11m	0.400; 0.320m	C2
T34	Norway maple	8m	0.25m	B2
T35	Wild cherry	7m	0.08m	C1
T36	Eucalyptus	11m	0.25m	C1
T37	Ash	7.5m	0.19m	C1

Surveyed Groups

Ref.	Species	B.S. Cat.
G1	Fraxinus excelsior	C2
G2	Prunus spinosa	C2
G3	Mixed group	C2
G4	Sambucus nigra	C2
G5	Prunus domestica	C2
G6	Mixed group	C2
G7	Mixed group	C2
G8	Prunus spinosa	C2
G9	Mixed group	C2
G10	Crataegus monogyna, Sambucus nigra	C2
G11	Mixed group	C2
G12	Crataegus monogyna, Prunus spinosa	C2
G13	Mixed Group	C2
H1	Mixed hedge	C2
W1	Mixed woodland	B2

Notes:

This plan is generally based on the requirements as set out in the revised British Standard BS5837:2012.

The original of this drawing was produced in colour - a monochrome or black & white copy should not be relied upon.

This Tree Survey Plan should be used to help inform the design and layout of the proposed development, including demolition, earthworks, buildings, roads, and services. A useful and informative resource for all parties with an interest in development can be found in Annex A of BS5837:2012.

To be read in conjunction with Lloyd Bore Tree Survey Report.

rev. 19/03/15

revision note.

drawing no. 3460_DR_001

client & project.
BDB Design
Abbey Way Willesborough

drawing title.
Tree Survey Plan

status. **Planning**
scale. **1:500** drawn by. **CB**
sheet. **A1** checked by.

lloyd bore

33 ST GEORGE'S PLACE
CANTERBURY
KENT CT1 1UT

t: 01227 464 340
e: mail@lloyd bore.co.uk
w: www.lloyd bore.co.uk

ROOT PROTECTION AREAS (RPAs):

BS.5837: 2012 recommends that an area around each retained tree should be protected from disturbance and damage to tree roots by ensuring the prevention of compaction and contamination of the rooting environment.

RPAs are calculated for all category A, B and C grade trees in accordance with the recommendation of the Standard, and are shown as dotted coloured lines according to the tree category.

RPAs are calculated and shown unadjusted as a concentric circle centred on the trunk of each tree, but if there appear to be significant obstructions to root growth both natural and manmade they can be adjusted and where applicable reshaped to illustrate more accurately the likely distribution of roots.

The RPAs are shown unadjusted on this plan.