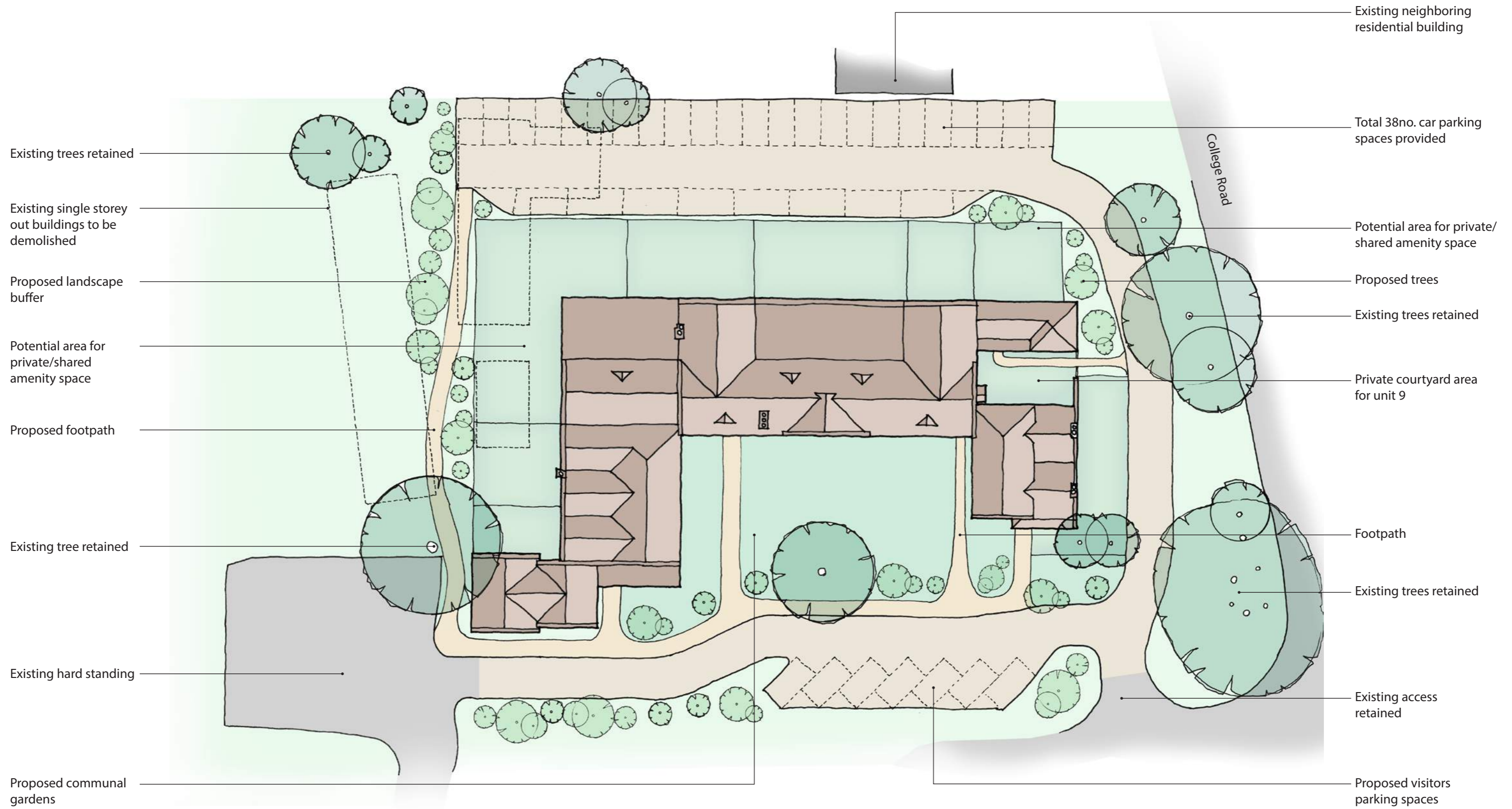


4

Sketch Design Proposals

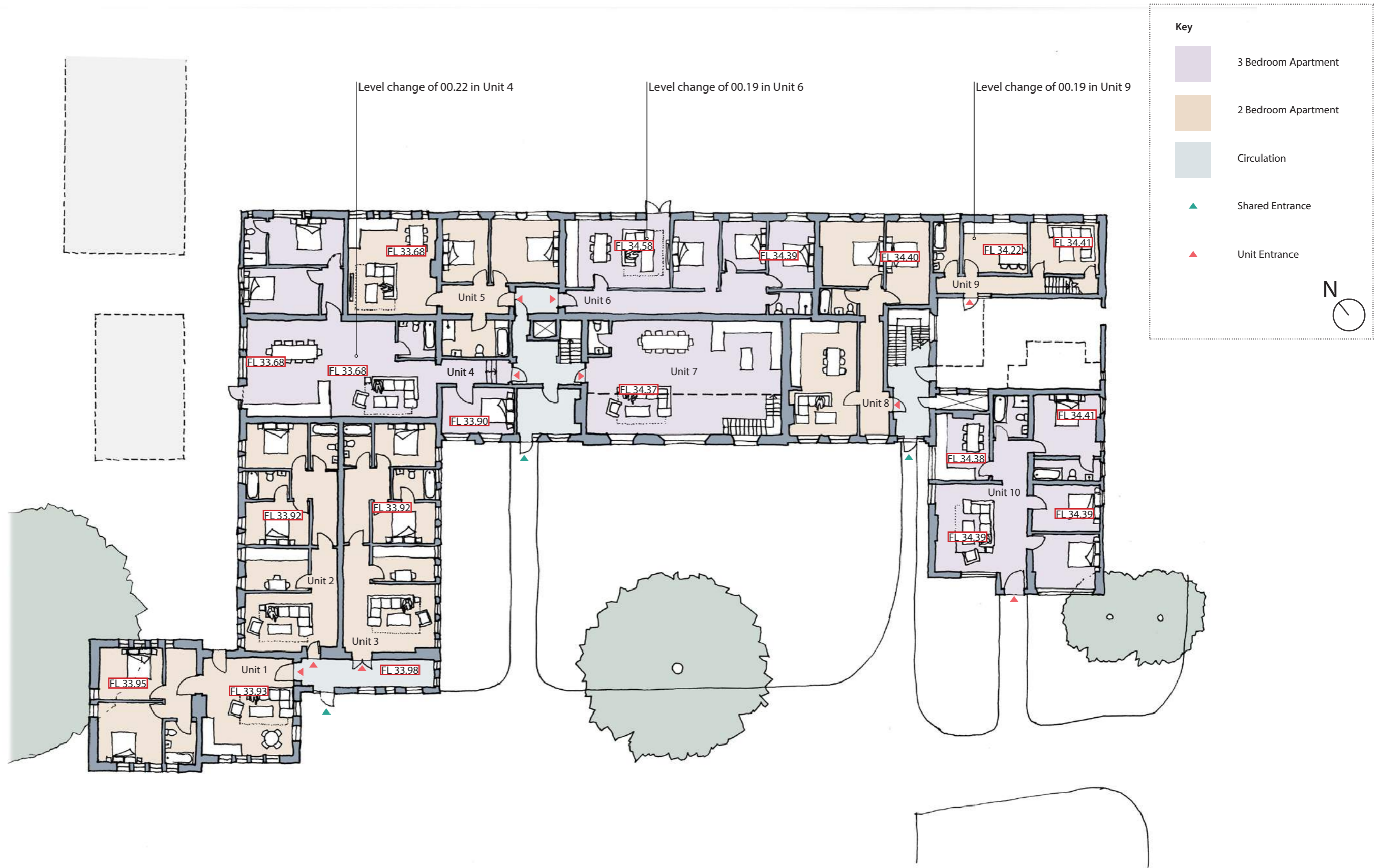
- 4.1 Proposed Site Plan
- 4.2 Proposed Ground Floor Plan
- 4.3 Proposed First Floor Plan
- 4.4 Proposed Second Floor Plan
- 4.5 Accommodation Schedule



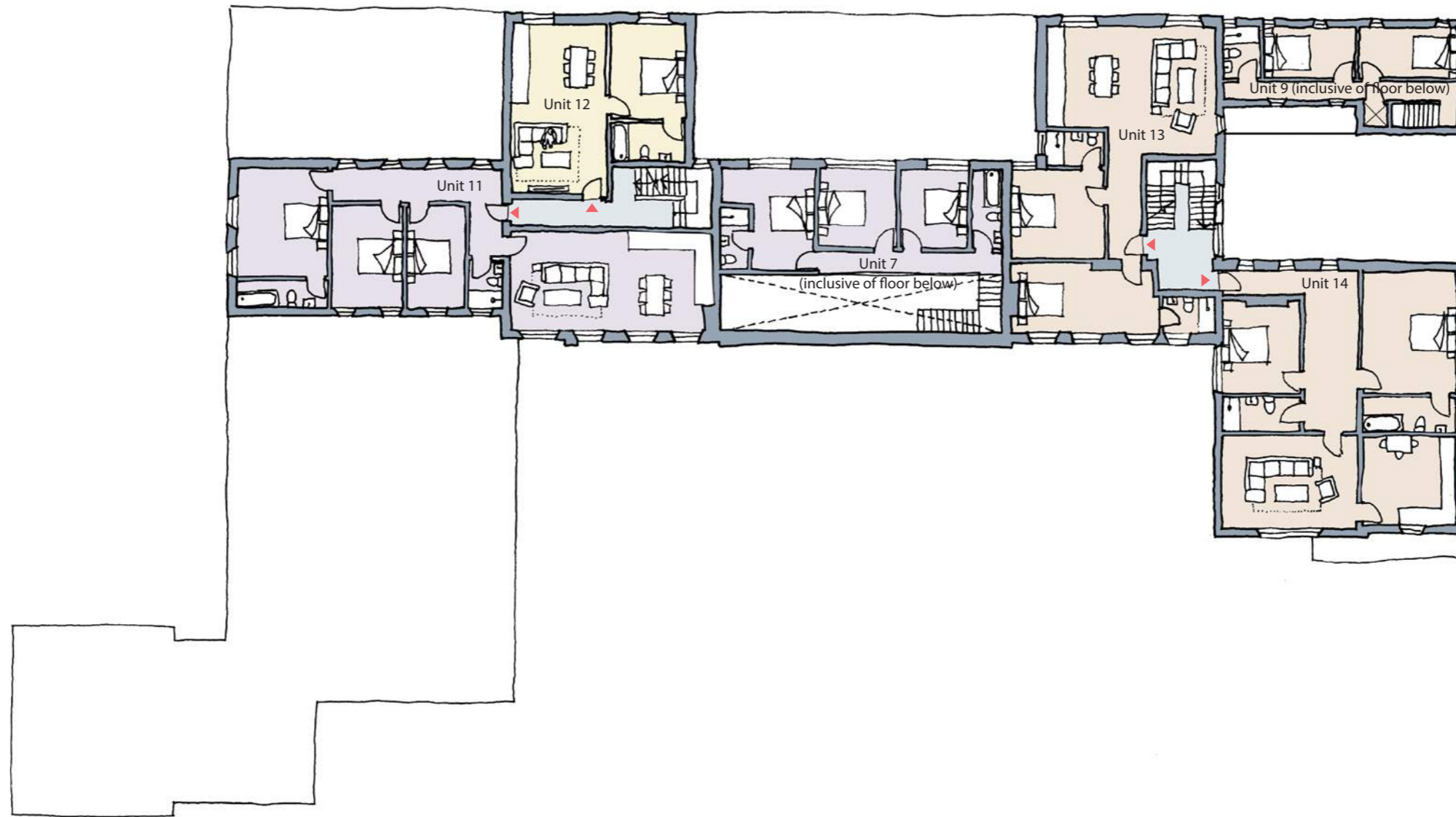
4.1 Proposed Site Plan



4.2 Proposed Ground Floor Plan (n.t.s.)



4.2 Proposed Ground Floor Plan (n.t.s.) - Building Levels

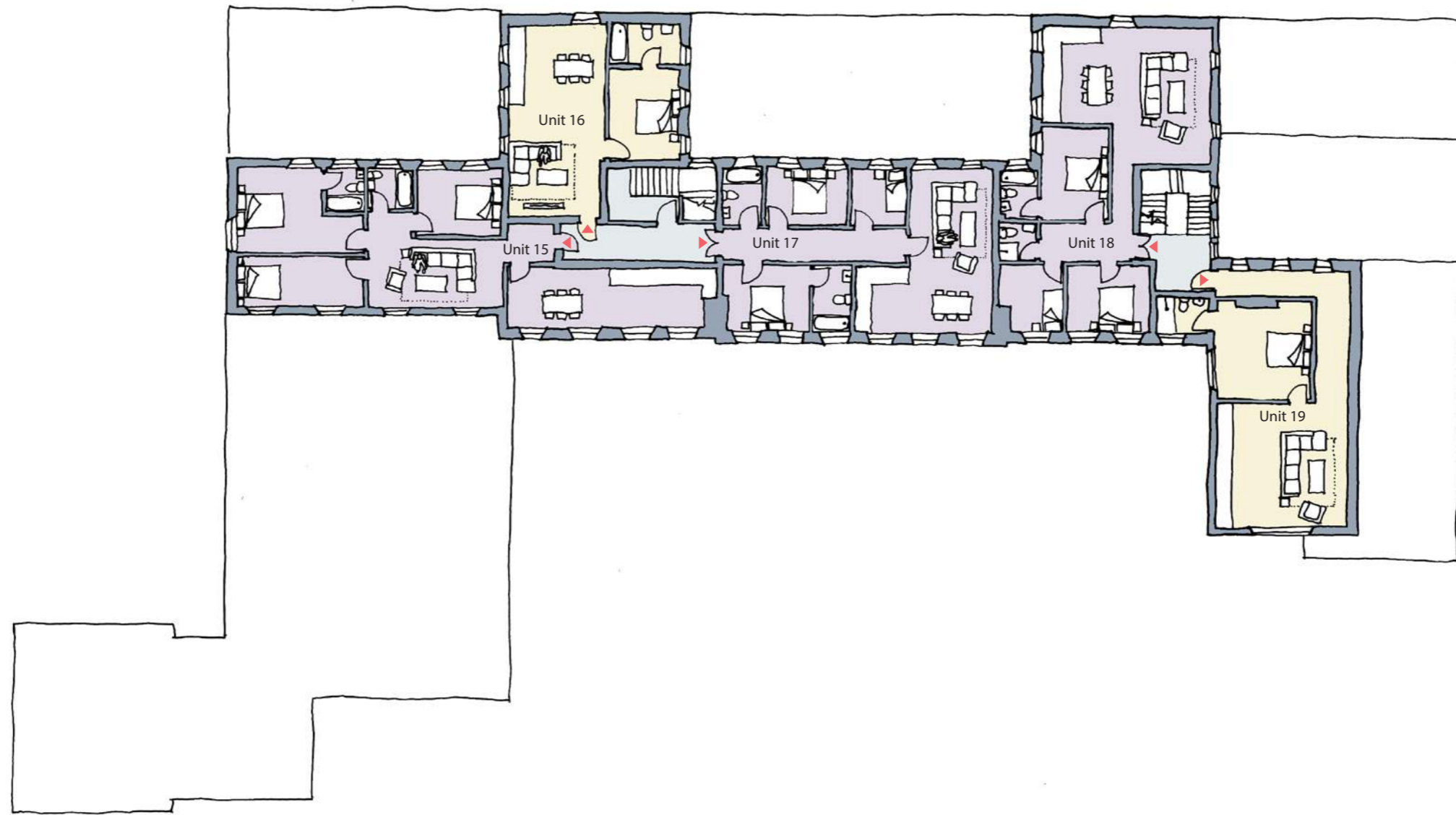


Key

- 3 Bedroom Apartment
- 2 Bedroom Apartment
- 1 Bedroom Apartment
- Circulation
- Unit Entrance

N

4.3 Proposed First Floor Plan (n.t.s.)

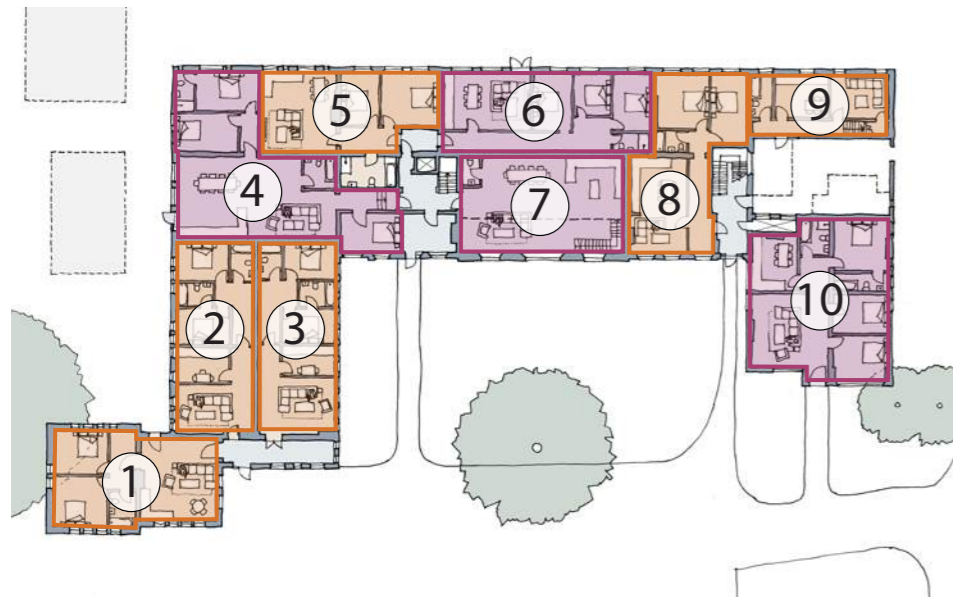


Key

- 3 Bedroom Apartment
- 1 Bedroom Apartment
- Circulation
- Unit Entrance

N

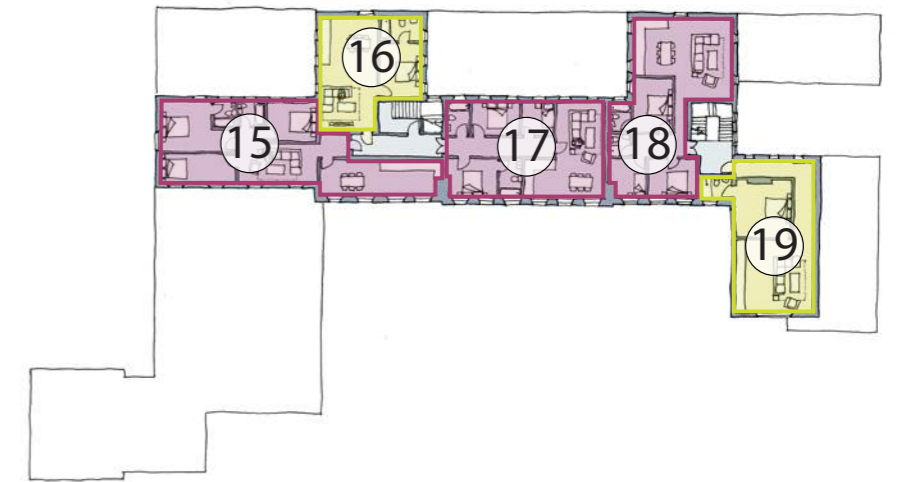
4.4 Proposed Second Floor Plan (n.t.s.)







Ground Floor Plan



First Floor Plan



Second Floor Plan

Key		Apartment Type		Number of Units	
	3 Bedroom Apartment	1 Bed Apartments	no. 3	2 Bed Apartments	no. 8
	2 Bedroom Apartment	3 Bed Apartments	no. 8		
	1 Bedroom Apartment				
N 		Total	no. 19		

4.5 Accommodation Schedule

- 2015 RIBA Regional Award
(Pobble House, Dungeness)
- 2014 Kent Design Awards - Best House
(Pobble House, Dungeness)
- 2013 World Architecture Award - Facade Of The Year
(The Crit Building, University Of Kent)
- 2012 Kent Design Awards (Overall Winner)
(Rocksalt Restaurant)
The Steven Lawrence Award Finalist
(The Marquis, Boutique Hotel & Restaurant)
RIBA Regional Award
(Rocksalt Restaurant)
RIBA Regional Award
(The Marquis, Boutique Hotel & Restaurant)
- 2011 RIBA National Award
(Mill House - Private Dwelling)
RIBA Manser Medal (Finalist)
(Mill House - Private Dwelling)
RIBA Regional Award (Commended)
- 2010 Kent Design Awards (Best Education Category)
(St. James the Great School)
Building Design & Construction Award
(St. James the Great School)
Building Design & Construction Award
(Ashford Oaks School)
- 2009 Evening Standard New Homes Award
(Home Farm - Private Dwelling)
- 2008 RIBA Regional Award (Residential Leisure)
(Home Farm - Private Dwelling)
'Britain's Best Home'
(Admiralty House - Private Dwelling)
- 2007 Kent Design Award (Best Small Project)
(Admiralty House - Private Dwelling)
RIBA Regional Award (Best Conversion)
(Admiralty House - Private Dwelling)
Kent Design Award (Education)
(Phoenix School)
- 2006 'What House' Award (Best House in UK)
(Admiralty House - Private Dwelling)
- 2005 RIBA National Award
(St. Augustine School)

QMS ISO 9001 registered firm
Guy Holloway Architects Limited registered in England and Wales at The Tramway Stables,
Rampart Road, Hythe, Kent CT21 5BG. Company No: 07338729

© Guy Holloway Architects Limited All rights reserved.
The information within this document is copyright of Guy Holloway Architects Limited and should not be copied or reproduced without written consent. All known information and image sources have been credited where possible and no copyright infringement is intended. This document should not be used to scale from and should not be used for construction purposes. The information in this document is given in good faith and every effort has been made to ensure its accuracy. Guy Holloway Architects Limited accepts no responsibility for error or misinterpretation.