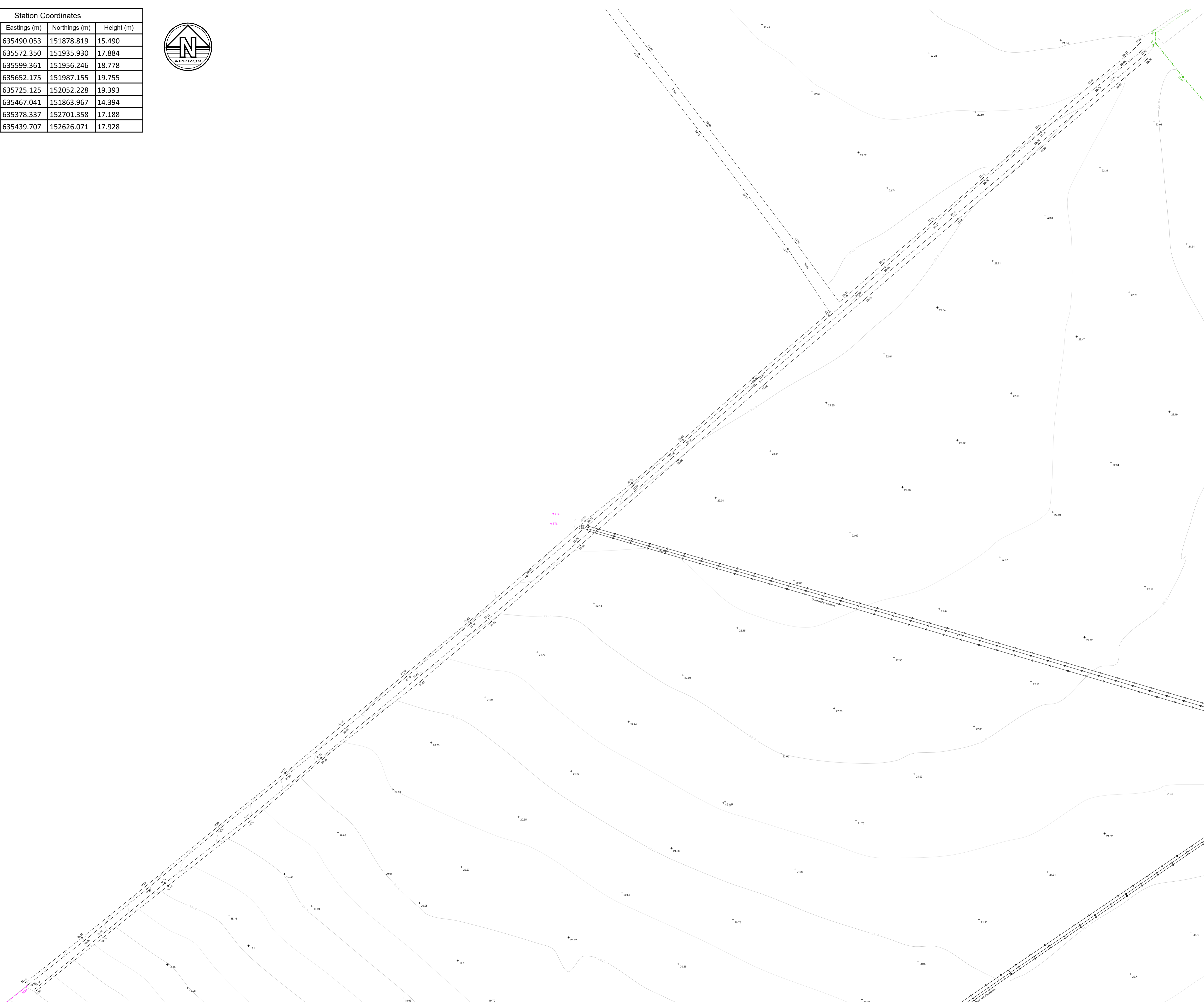


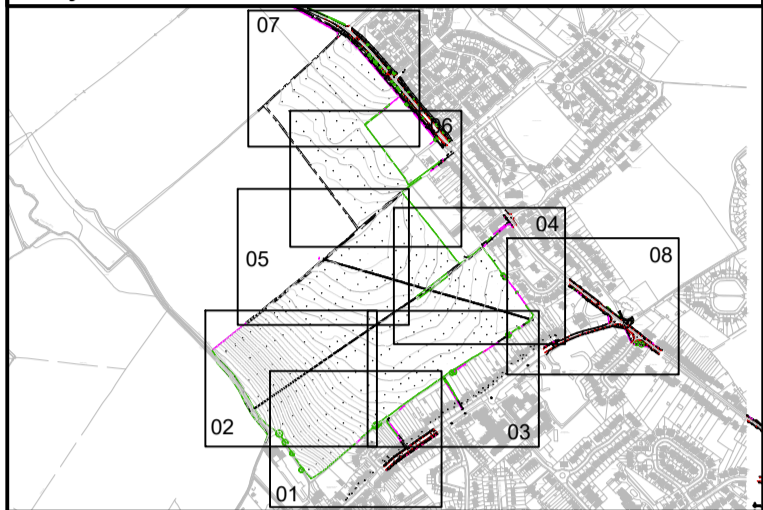
Station Coordinates			
Station Name	Eastings (m)	Northings (m)	Height (m)
BWB01	635490.053	151878.819	15.490
BWB02	635572.350	151935.930	17.884
BWB03	635599.361	151956.246	18.778
BWB04	635652.175	151987.155	19.755
BWB05	635725.125	152052.228	19.393
BWB10	635467.041	151863.967	14.394
BWBR1	635378.337	152701.358	17.188
BWBR2	635439.707	152626.071	17.928



Notes

1. Do not scale this drawing. All dimensions must be checked/ verified on site. If in doubt ask.
2. This drawing is to be read in conjunction with all relevant architects, engineers and specialists drawings and specifications.
3. All dimensions in metres unless noted otherwise. All levels in metres unless noted otherwise.
4. Any discrepancies noted on site are to be reported to the engineer immediately.
5. No scale factor has been applied to this survey, therefore the os coordinates are to be treated as arbitrary. Please refer to survey station information below for on site control establishment.
6. All coordinates and height data relate to OSGB36(15). Control stations are coordinated by means of GPS receiving real time corrections via OS smart net.
7. All manhole data is collected from ground level therefore discrepancies may occur. More accurate data is only achievable via confined space entry.
8. OS license number: 100022432

Key Plan



Legend

	OS Buildings		Contour Lines
	Surveyed Buildings		Inspection Chamber
	Building		Flow direction and pipe diameter
	Wall		Station and Name
	Kerb Channel Line		Monitoring Borehole
	Top of Kerb		Tree / Bush / Sapling
	Edge of Surface		Area of Vegetation/ Extent of Tree Canopy
	Top of Bank		Hedge
	Bottom of Bank		Body of Water
	Canopy / Overhang		Body of Water from OS
	Line Marking		Spot Level
	Centre Line		Assumed Surface
	Watercourse		Water Drainage Line
	Centre Line		Surface Water Drainage Line
	Barrier		
	Fence		
	Gate		
	Overhead Powerline		
	Overhead Utilities		

AP	Anchor Point	FBW	Fence Barbed Wire	LB	Litter Bin
BG	Back Gully	FCB	Fence Closed Board	LP	Lamp Post
BO	Bollard	FCL	Fence Chain Link	MH	Manhole
BS	Bus Stop	FEL	Fence Electric	Mkr	Service Marker
BT	British Telecom	FMP	Fence Metal Panel	PB	Post Box
C	Crest	FMR	Fence Metal Railing	PT	Post
CL	Cover Level	FOB	Fence Open Board	RE	Rodding Eye
CMP	Cable Marker	FPW	Fence Post & Wire	SP	Sign Post
Post		FSP	Fence Steel Palisade	ST	Stop Tap
CCTV/Security Camera	FWM	Fence Wire Mesh	SV	Stop Valve	
CITY Cable TV	FFL	Finished Floor Level	TCB	Telephone Call Box	
DC	Drainage Channel	Gas	Gas	THL	Threshold Level
DK	Drop Kerb	GV	Gas Valve	TL	Traffic Light
DP	Down Pipe	GY	Gully	TP	Telegraph Post
Elec	Electric	Ht	Height	TS	Traffic Signal
EP	Electricity Post	IC	Inspection Chamber	UTS	Unable to Survey
ER	Earth Rod	IFL	Internal Floor Level	WL	Water Level
FH	Fire Hydrant	IL	Invert Level (as a reduced level)	WM	Water Meter
FL	Floodlight			WVO	Wash Out

P1	18.07.19	First Issue	IR	DG
Rev	Date	Details of issue / revision	Drw	Rev

Issues & Revisions

BWB ■ Birmingham | 0121 233 3322
 □ Leeds | 0113 233 8000
 □ London | 020 7407 3879
 □ Manchester | 0161 233 4260
 □ Nottingham | 0115 924 1100
 www.bwbconsulting.com

Client
Richborough Estates

Project Title
Sandwich Road, Sholden

Drawing Title
**Existing Site Plan
 Sheet 5 of 10**

Drawn:	I.Riley	Reviewed:	D.Gibbons
BWB Ref:	BMW2914	Date:	18.07.19
Scale@A1:	1:500		

INFORMATION		Status	Rev
Project - Originator - Zone - Level - Type - Role - Number	SRS-BWB-00-05-DR-G-0001	S2	P1