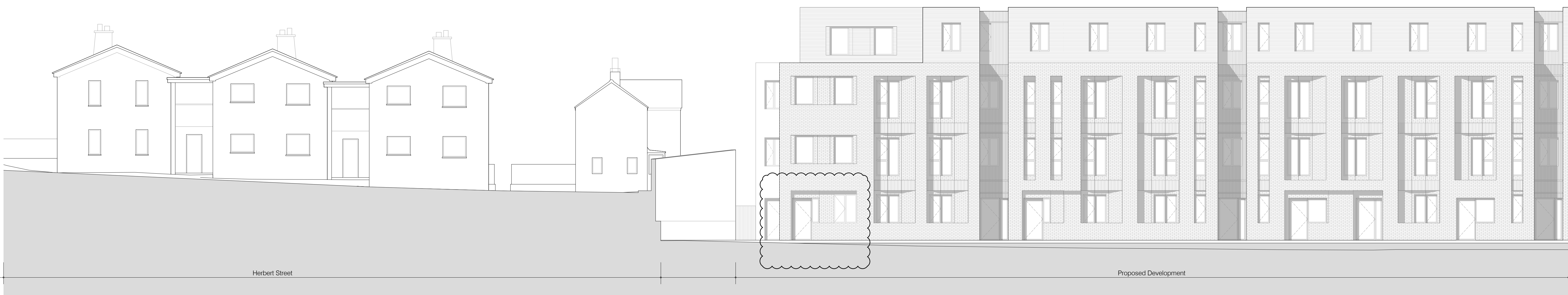
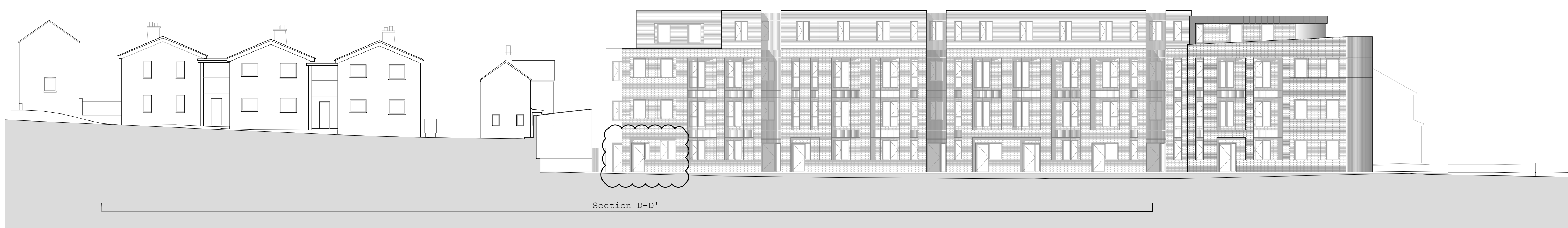


Key plan 1:500@A1

Section C-C'



Section D-D'



Key Section - 1:200

Hollaway

London | 10a Acton Street | London | WC1X 9QG
 T +44 (0) 20 7094 5429 | E london@hollawaystudio.co.uk | W www.hollawaystudio.co.uk
 Kent | The Tramway Stables | Ramport Road | Hythe | Kent | CT21 5BG
 T +44 (0) 1303 260 515 | E kent@hollawaystudio.co.uk | W www.hollawaystudio.co.uk

Project | COOMBE VALLEY RD
DOVER
 Client | LIVINGSTON HOMES LTD
 Title | PROPOSED SECTIONS
 Status | PLANNING

Scale@A1 | 1:100 Date | 15.10.2020 Drawn | CO Chk'd | VL

Project Number | Drawing Number | Revision
 20.010 | 042 | P1
 Blm Number

