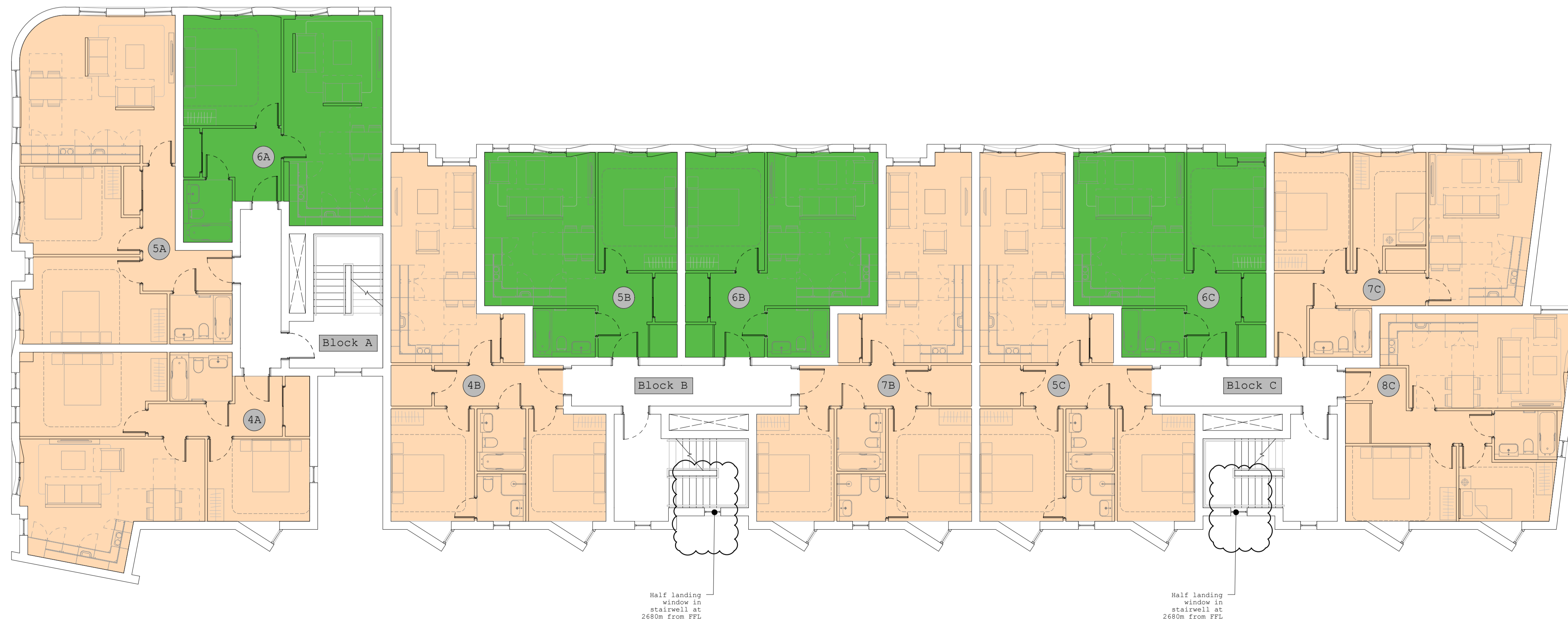


Ground Floor Plan



First Floor Plan

- 1 Bed Apartments
- 2 Bed Apartments

P1 Half landing stairwell windows added to plan. Side glazed panel added to entrance door 10.11.2012

Hollaway

London | 10a Acton Street London WC1X 9SD
 T +44 (0) 20 7096 5425 | E london@hollawaystudio.co.uk | W www.hollawaystudio.co.uk
 Kent | The Tramway Stables | Ramport Road | Hythe | Kent | CT21 5BQ
 T +44 (0) 1303 260 515 | E kent@hollawaystudio.co.uk | W www.hollawaystudio.co.uk

Project | COOMBE VALLEY RD DOVER
 Client | LIVINGSTON HOMES LTD
 Title | PROPOSED GRD & 1ST FLOOR PLANS
 Status | PLANNING

Scale | A1 | 1:100 Date | 15.10.2020 Drawn | CO Chk'd | VL

Project Number | 20.010 Drawing Number | 030 Revision | P0
 Bim Number

