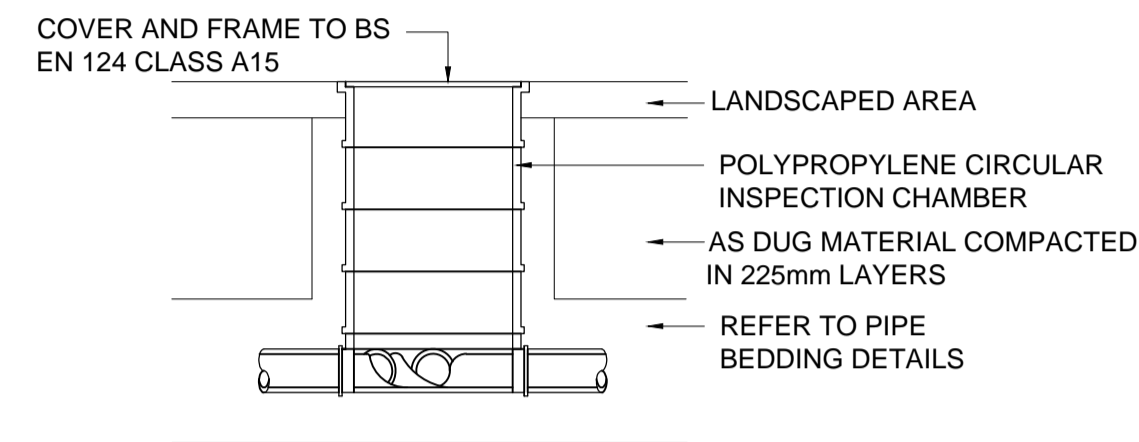
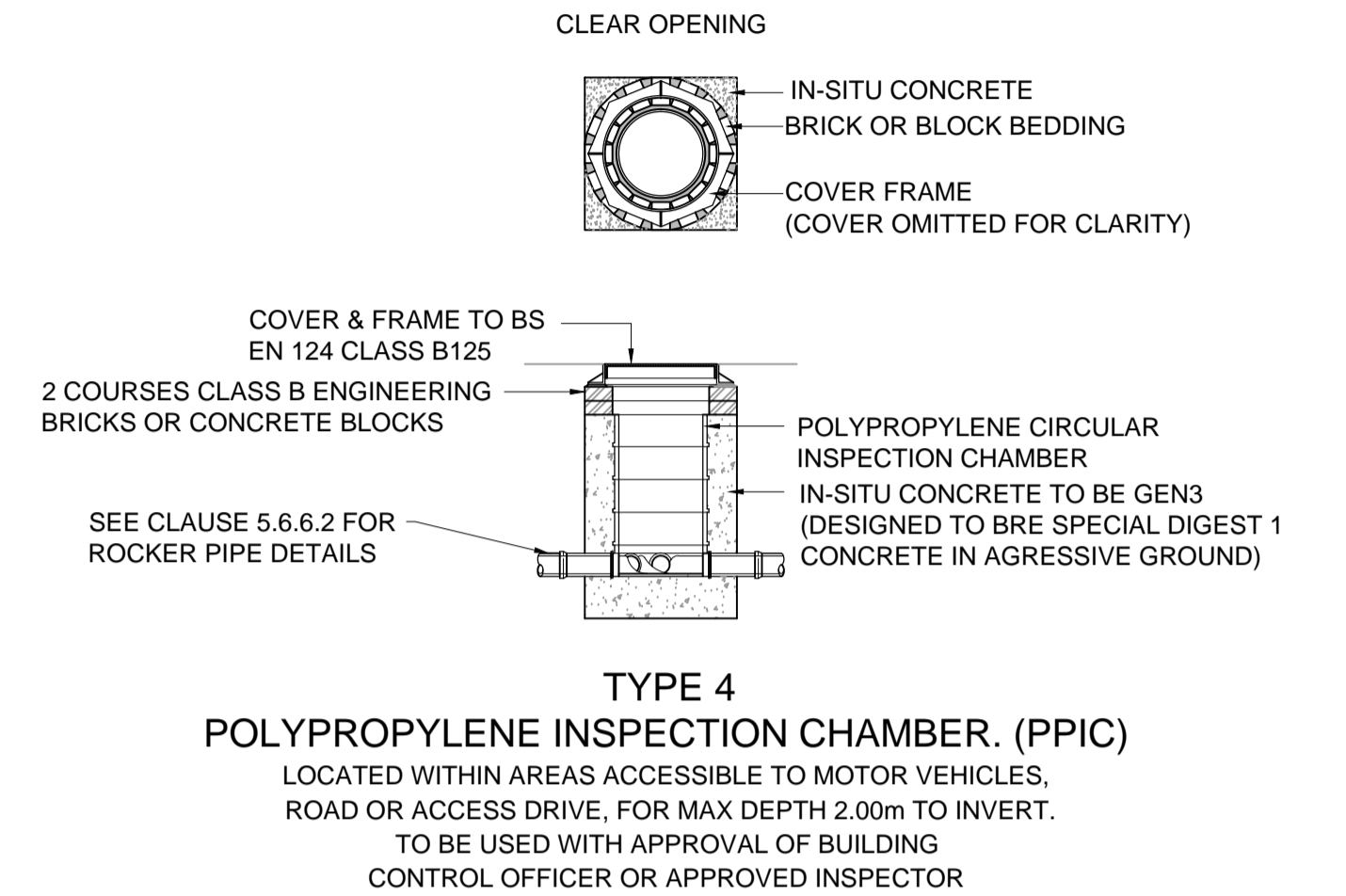


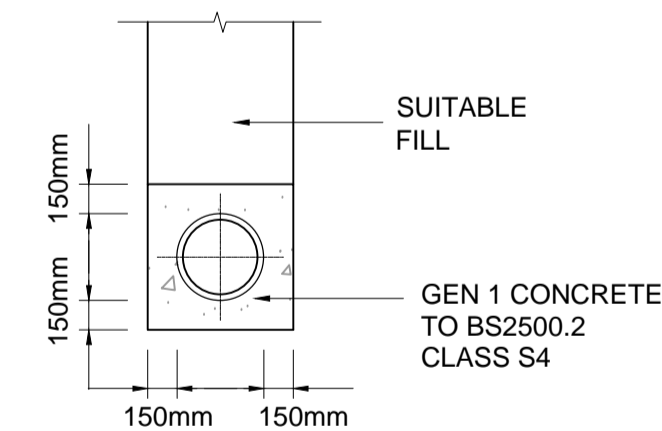
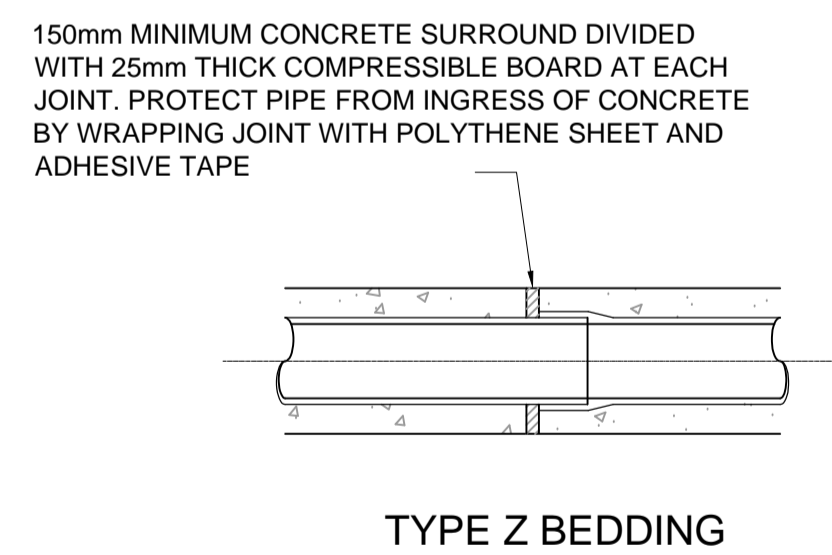
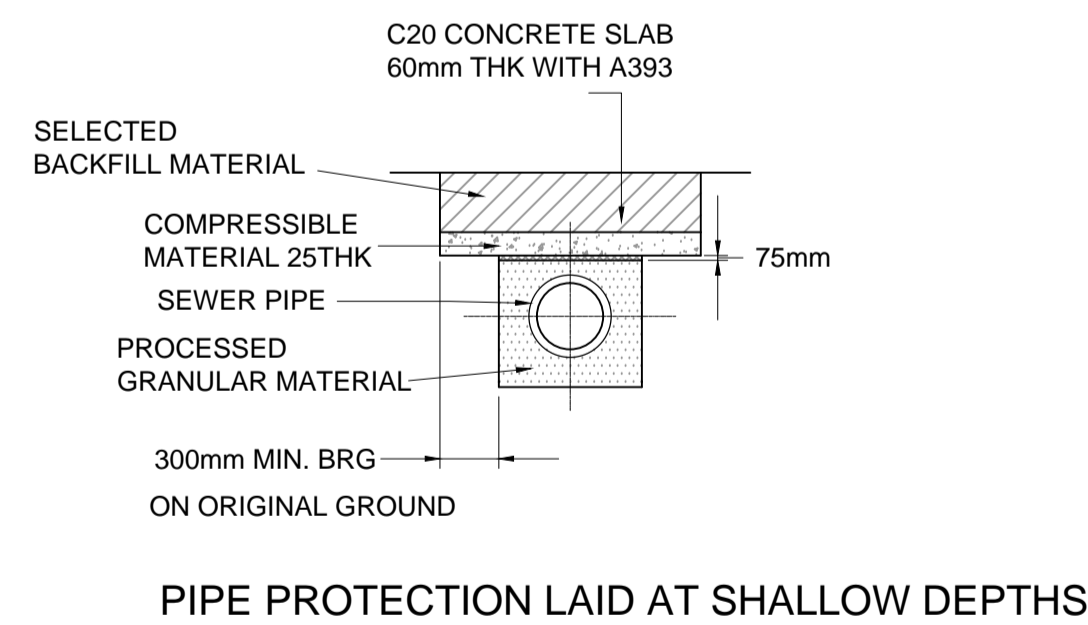
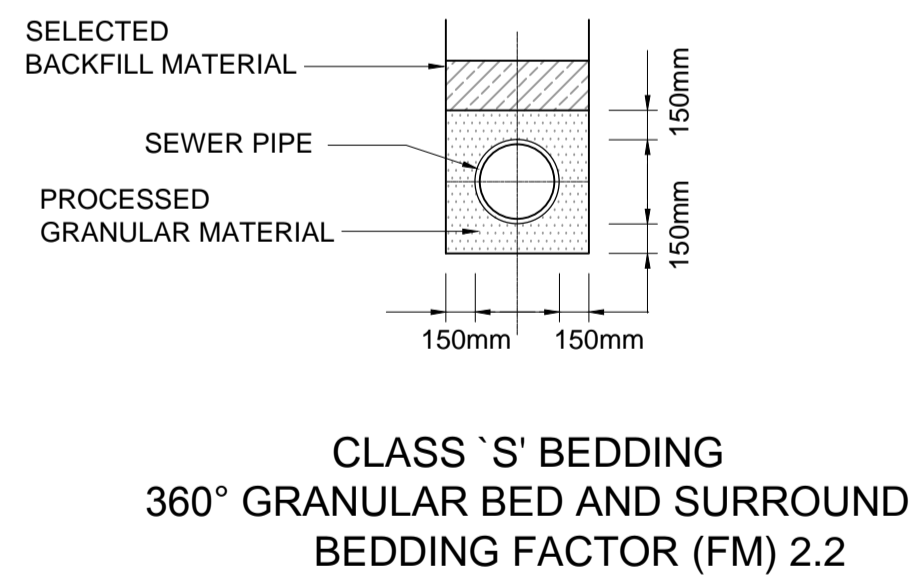
TYPICAL MANHOLE DETAIL - TYPE 2
(MAXIMUM DEPTH FROM COVER LEVEL TO SOFFIT OF PIPE 3.0m)



POLYPROPYLENE INSPECTION CHAMBER (PPIC) TYPE 4 (S)
(LOCATED WITHIN PRIVATE AREAS INACCESSIBLE TO MOTOR VEHICLES FOR DEPTHS TO INVERT NOT GREATER THAN 2.00m)



TYPE 4 POLYPROPYLENE INSPECTION CHAMBER. (PPIC)
LOCATED WITHIN AREAS ACCESSIBLE TO MOTOR VEHICLES, ROAD OR ACCESS DRIVE, FOR MAX DEPTH 2.00m TO INVERT. TO BE USED WITH APPROVAL OF BUILDING CONTROL OFFICER OR APPROVED INSPECTOR



NOMINAL SIZE (DN)	PIPE BEDDING REQUIREMENTS (mm)
150	10 OR 14 NOMINAL SINGLE SIZE OR 14 TO 15 GRADED
225 to 525	10, 14 OR 20 NOMINAL SINGLE SIZE OR 14 TO 5 GRADED OR 20 TO 5 GRADED
600 and above	10, 14, 20 OR 40 NOMINAL SIZE CRUSHED ROCK OR 14 TO 5 GRADED OR 20 TO 5 GRADED OR 40 TO 5 GRADED

Notes:
1. THIS DRAWING TO BE READ IN CONJUNCTION WITH ALL OTHER RELEVANT MONSON DRAWINGS AND SPECIFICATIONS. ANY DISCREPANCIES TO BE REPORTED TO MONSON PRIOR TO ANY FABRICATION OR WORK COMMENCING ON SITE.
2. DO NOT SCALE THIS DRAWING. USE FIGURED DIMENSIONS ONLY.
3. ALL DIMENSIONS IN MILLIMETRES, ALL LEVELS IN METRES.



©Monson Engineering Ltd. A MW 17/10/16 Original Issue
Issue By Date Amendments

MONSON

Broadway Chambers, High Street, Crowborough, East Sussex TN6 1DF
Tel: (01892) 601370, Fax: (01892) 601379
E-mail: enquiries@monson.co.uk

Project:
Old Ashford Road
Lenham
Kent

Description:
Preliminary Foul Water
Drainage Standard Details

Original Drawing: Prepared MW Approved GL
Origin: Crowborough Size A1
Current Issue: Approved GL Date 17/10/16
Drawing Status: PRELIMINARY

Scale: 1:500
Dwg No: 5960Q /109
Issue: A