

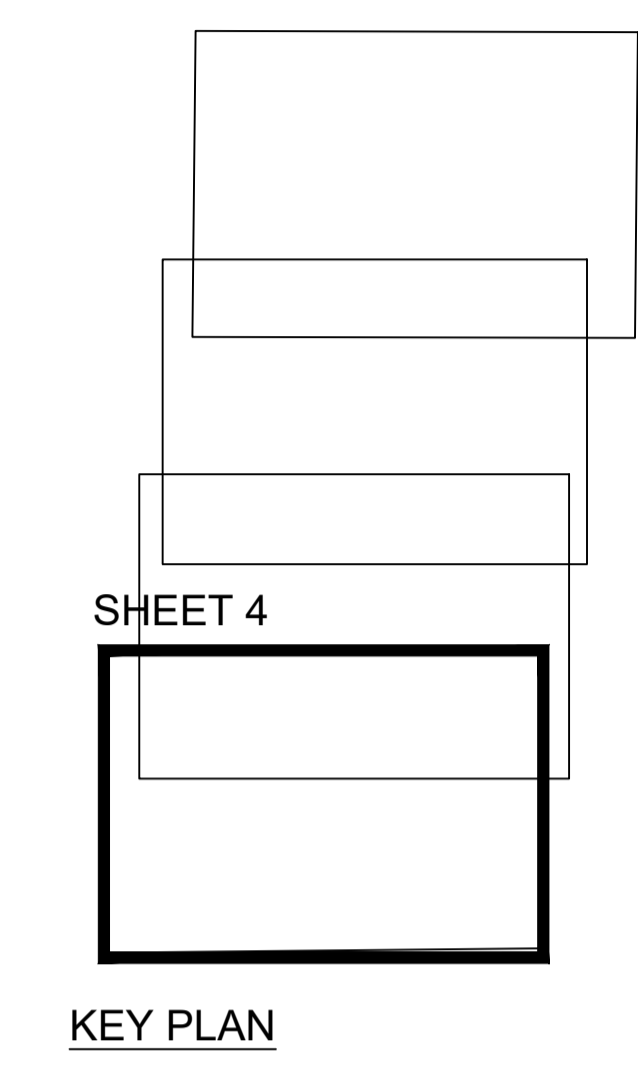
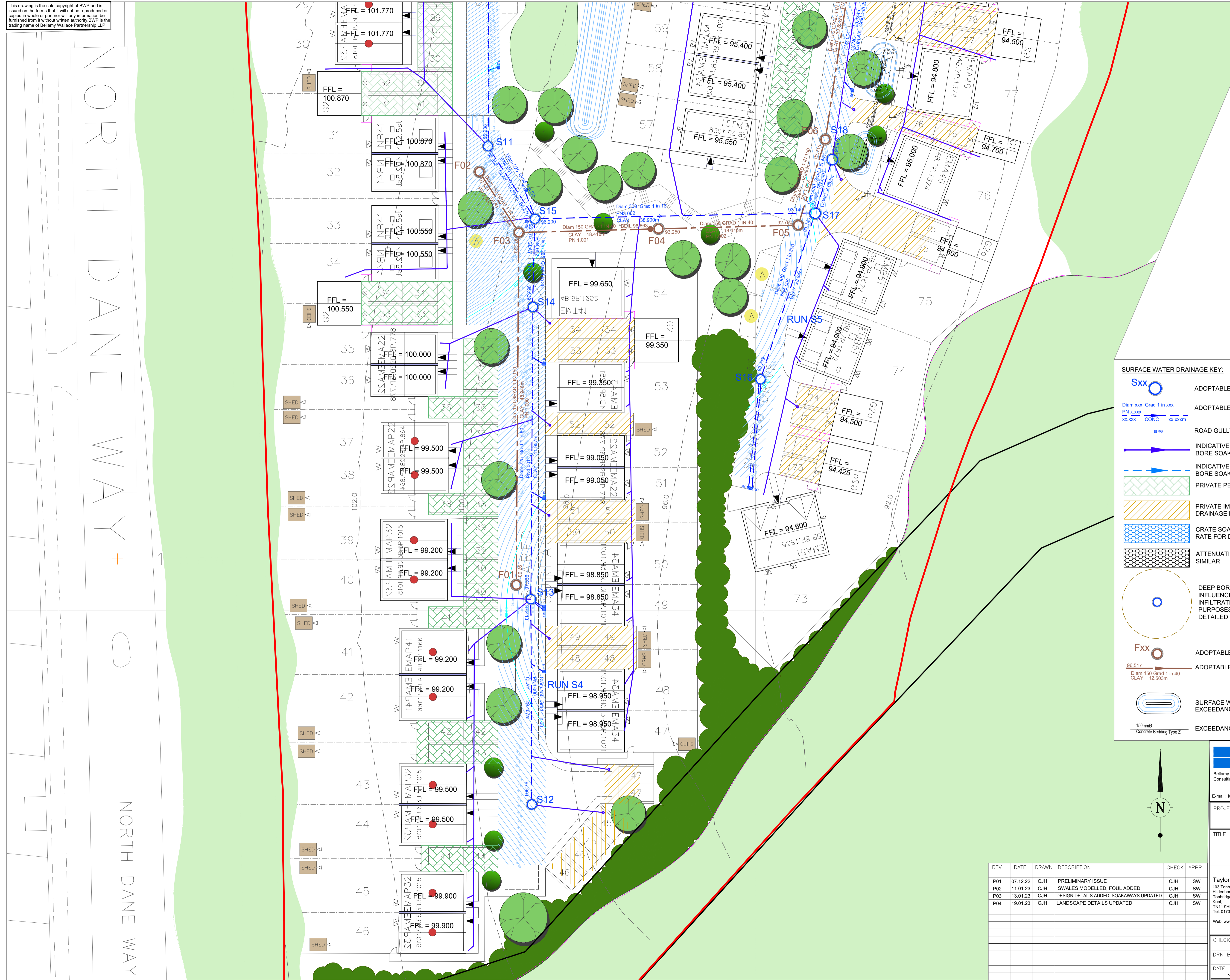
This drawing is the sole copyright of BWP and is issued on the terms that it will not be reproduced or copied in whole or part nor will any information be furnished from it without written authority BWP is the trading name of Bellamy Wallace Partnership LLP

THIS DRAWING IS TO BE READ IN CONJUNCTION WITH ALL THE ENGINEER'S AND OTHER SPECIALISTS DRAWINGS AND SPECIFICATIONS.

DO NOT SCALE THIS DRAWING. WRITTEN DIMENSIONS ONLY SHALL BE USED. ANY DISCREPANCIES MUST BE REPORTED TO THE ARCHITECT/ENGINEER.

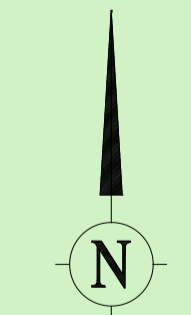
NORTH DANE WAY

NORTH DANE WAY



SURFACE WATER DRAINAGE KEY:

- Sxx** ○ ADOPTABLE SURFACE WATER MANHOLE
- Diam xxx Grad 1 in xxx
PN x xxx
xx.xxx CONC xx.xxxm
ADOPTABLE PIPE WORK (PIPE DIAMETER/GRADIENT PIPE NUMBER INVERT LEVEL/PIPE MATERIAL/PIPE LENGTH)
- ROAD GULLY
- INDICATIVE PRIVATE DRAINAGE RUN, CONNECTIONS TO PRIVATE DEEP BORE SOAKAWAY OR CRATE SOAKAWAY
- INDICATIVE PRIVATE DRAINAGE RUN, CONNECTIONS TO PRIVATE DEEP BORE SOAKAWAY OR CRATE SOAKAWAY
- PRIVATE PERMEABLE PAVING CONSTRUCTION
- PRIVATE IMPERMEABLE CONSTRUCTION, CONNECTION TO MAIN DRAINAGE NETWORK
- CRATE SOAKAWAY, 0.17m/hr INFILTRATION RATE FOR DESIGN PURPOSES
- ATTENUATION CRATES, POLYSTORM 'R' OR SIMILAR
- DEEP BORE SOAKAWAY AND ZONE OF INFLUENCE (10m WITHIN CHALK, 0.17m/hr INFILTRATION RATE USED FOR DESIGN PURPOSES. DEEP BORE 10m DEEP SUBJECT TO DETAILED DESIGN AND ON SITE TESTING)
- Fxx** ○ ADOPTABLE FOUL MANHOLE
- Diam 150 Grad 1 in 40
CLAY 12.503m
ADOPTABLE FOUL SEWER (PIPE DIAMETER/GRADIENT PIPE NUMBER INVERT LEVEL/PIPE MATERIAL/PIPE LENGTH)
- SURFACE WATER SWALE EXCEEDANCE ROUTE
- 150mmØ Concrete Bedding Type Z
EXCEEDANCE FLOW PIPEWORK



BWP
Bellamy Wallace Partnership
Consulting Structural Engineers
E-mail: kent@bwp-eng.co.uk

Grange House
Searsted Green Business Centre
The Green, Beantsted, Maidstone
Kent, ME14 4DZ

Tel: 01622 630675
BWP PROJECT REF K2275

PROJECT EAST HILL, CHATHAM, PHASE 1

TITLE SURFACE WATER AND FOUL DRAINAGE LAYOUT SHEET 4 OF 4

REV	DATE	DRAWN	DESCRIPTION	CHECK	APPR.
P01	07.12.22	CJH	PRELIMINARY ISSUE	CJH	SW
P02	11.01.23	CJH	SWALES MODELLED, FOUL ADDED	CJH	SW
P03	13.01.23	CJH	DESIGN DETAILS ADDED, SOAKAWAYS UPDATED	CJH	SW
P04	19.01.23	CJH	LANDSCAPE DETAILS UPDATED	CJH	SW

Taylor Wimpey South East
103 Tonbridge Road,
Hildenborough,
Tonbridge,
Kent,
TN11 9HL,
Tel: 01732 836000
Web: www.taylorwimpey.co.uk

Taylor Wimpey

CHECKED BY	DATE	APPROVED BY	DATE
DRN BY CJH	SCALE 1:250	DRAWING NUMBER K2275-CIV-0104	REV P04
DATE JAN 2023			