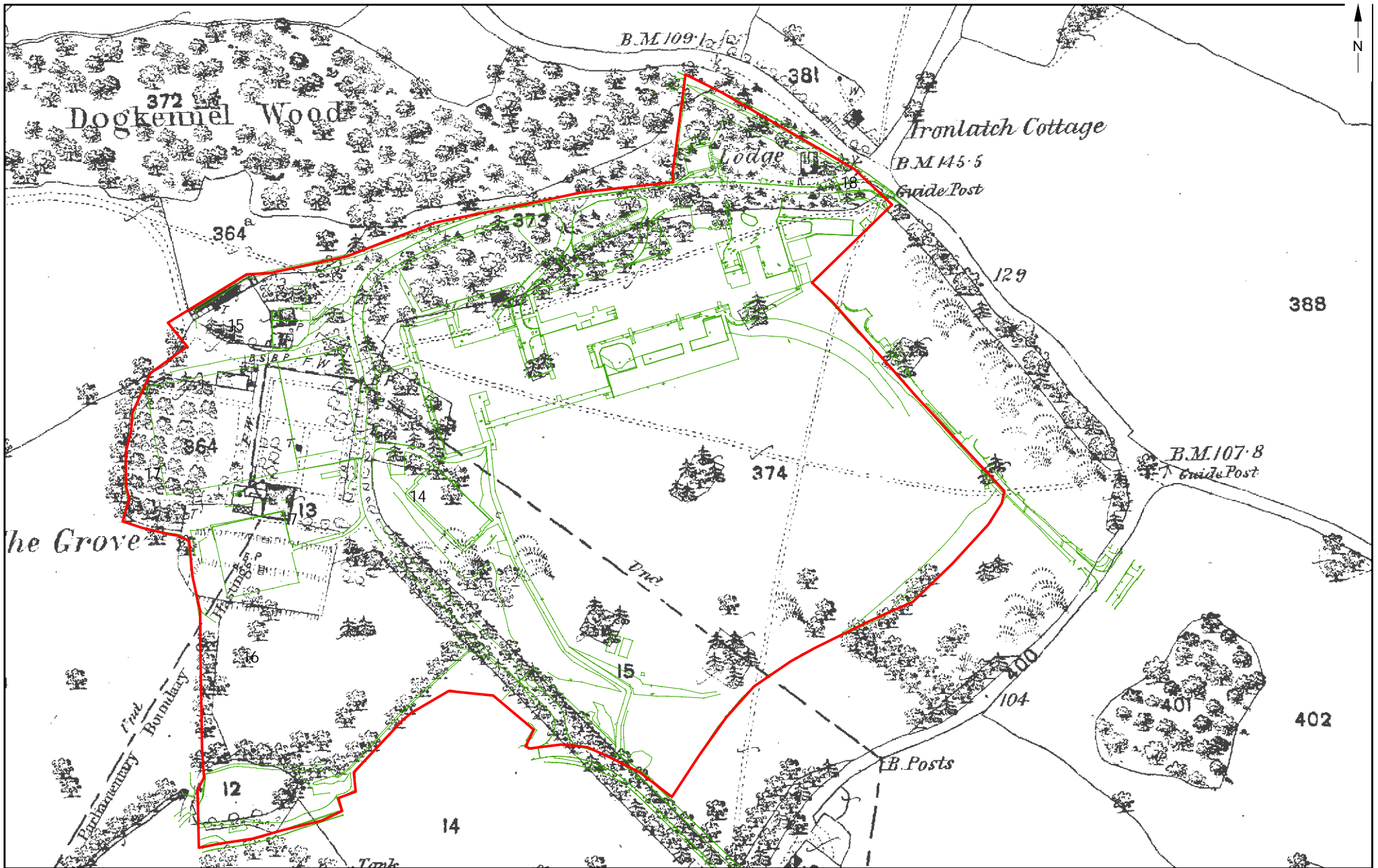


Contains Ordnance Survey data
Crown copyright and database right 2014

Site

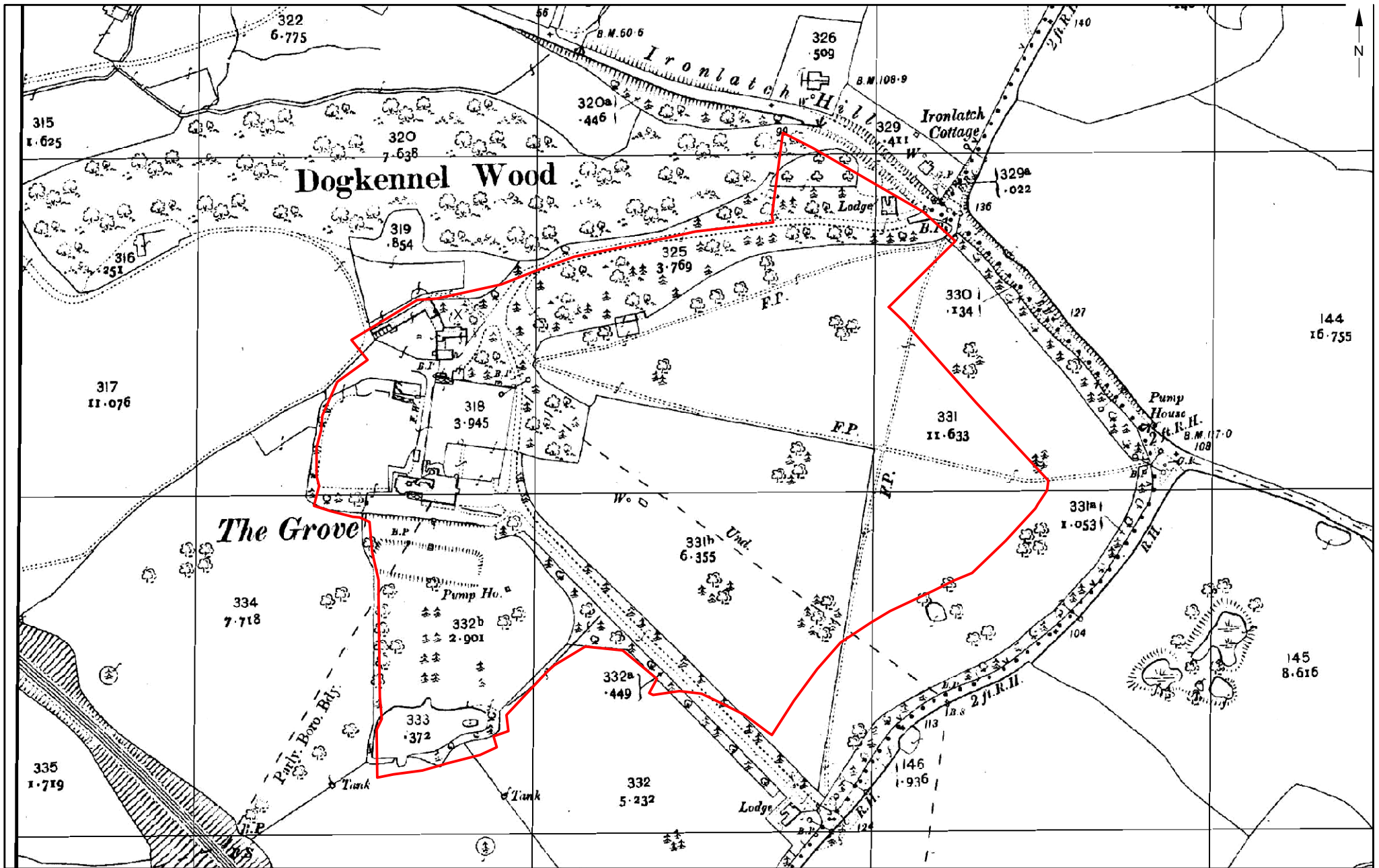
© Archaeology South-East		The Grove School, St Leonards-on-Sea		Fig. 6
Project Ref: 6959	Sept 2014	Extract from the 1873 25" Ordnance Survey		
Report Ref: 2014304	Drawn by: EMH			



Contains Ordnance Survey data
Crown copyright and database right 2014

Site

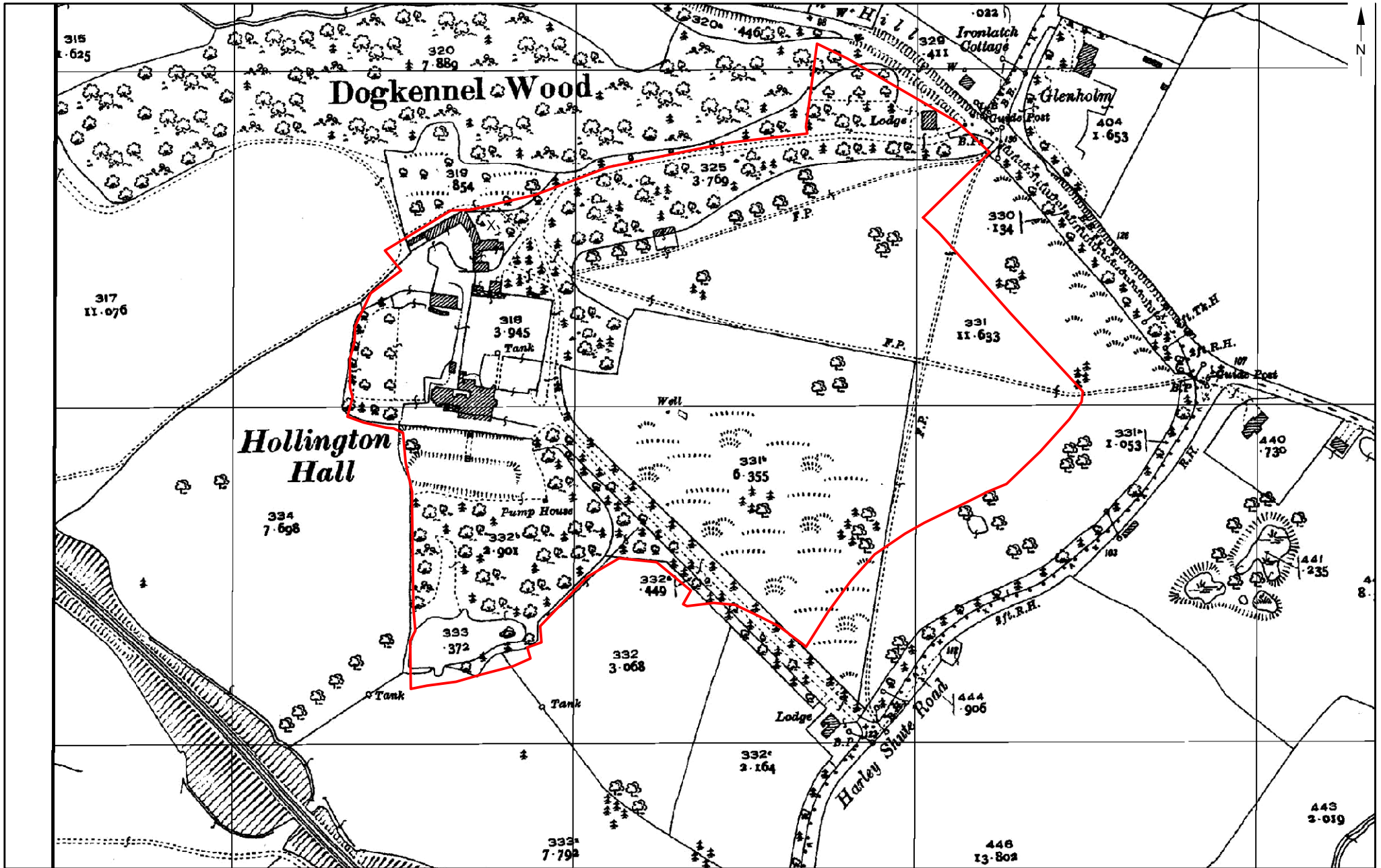
© Archaeology South-East		The Grove School, St Leonards-on-Sea		Fig. 7
Project Ref: 6959	Sept 2014	Extract from the 1873 25" Ordnance Survey with modern survey overlaid		
Report Ref: 2014304	Drawn by: EMH			



Site

Contains Ordnance Survey data
Crown copyright and database right 2014

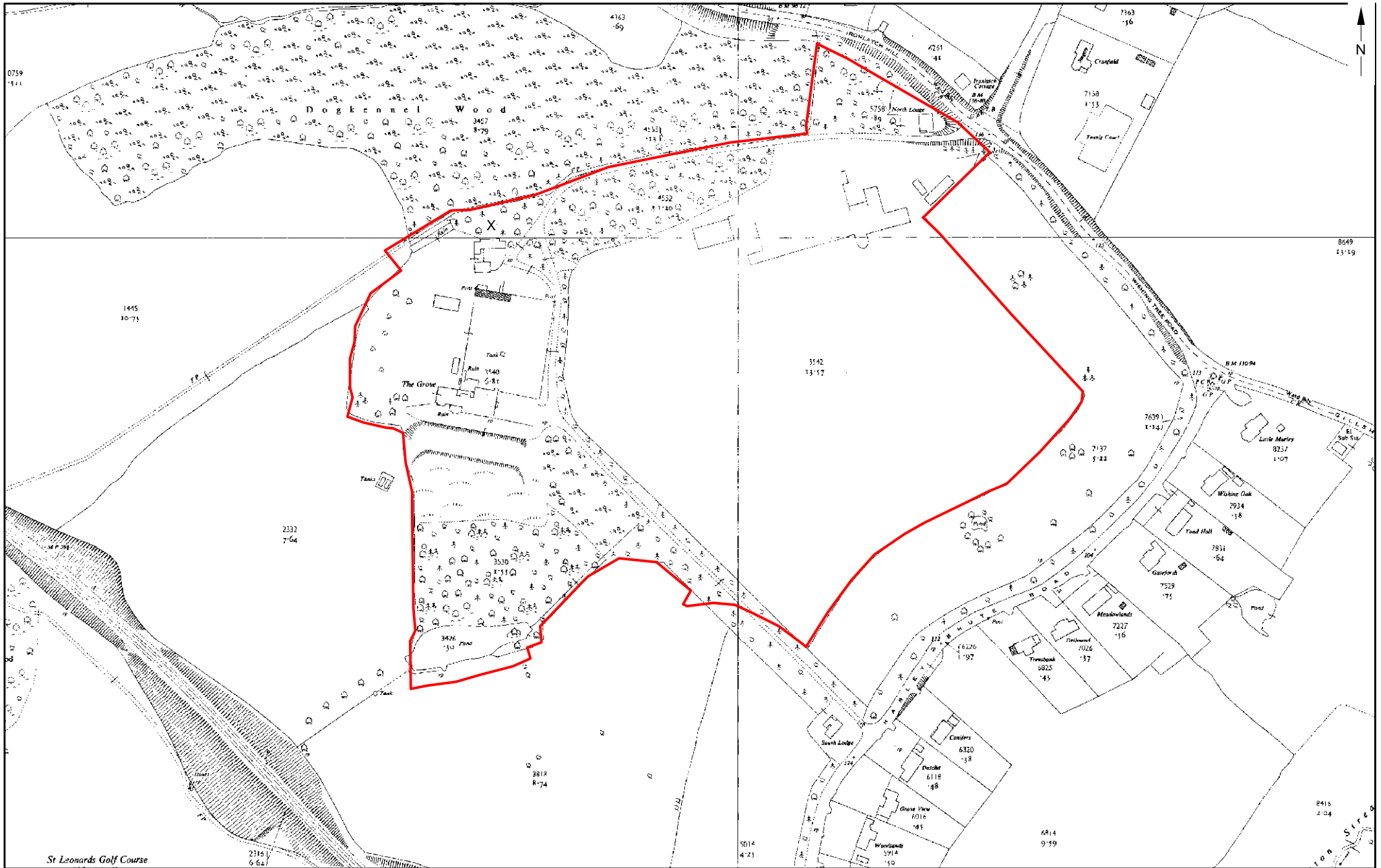
© Archaeology South-East		The Grove School, St Leonards-on-Sea		Fig. 8
Project Ref: 6959	Sept 2014	Extract from the 1909 Ordnance Survey 252 map		
Report Ref: 2014304	Drawn by: EMH			



Site

Contains Ordnance Survey data
Crown copyright and database right 2014

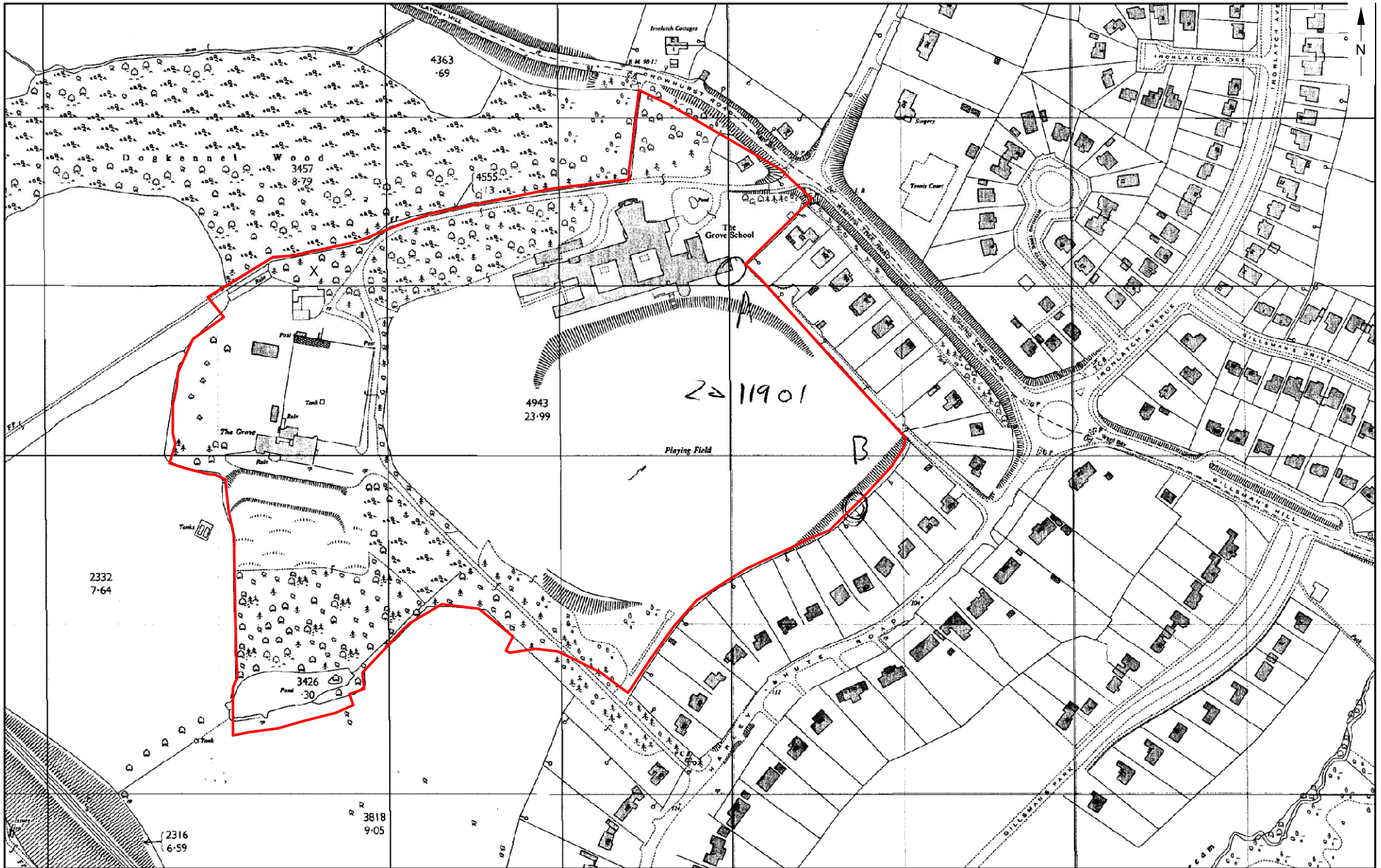
© Archaeology South-East		The Grove School, St Leonards-on-Sea		Fig. 9
Project Ref: 6959	Sept 2014	Extract from the 1928-9 Ordnance Survey map		
Report Ref: 2014304	Drawn by: EMH			



0 100
m
Contains Ordnance Survey data
Crown copyright and database right 2014

Site

© Archaeology South-East		The Grove School, St Leonards-on-Sea		Fig. 10
Project Ref: 6959	Sept 2014	Extract from the 1955 Ordnance Survey map		
Report Ref: 2014304	Drawn by: EMH			



Site

Contains Ordnance Survey data
 Crown copyright and database right 2014

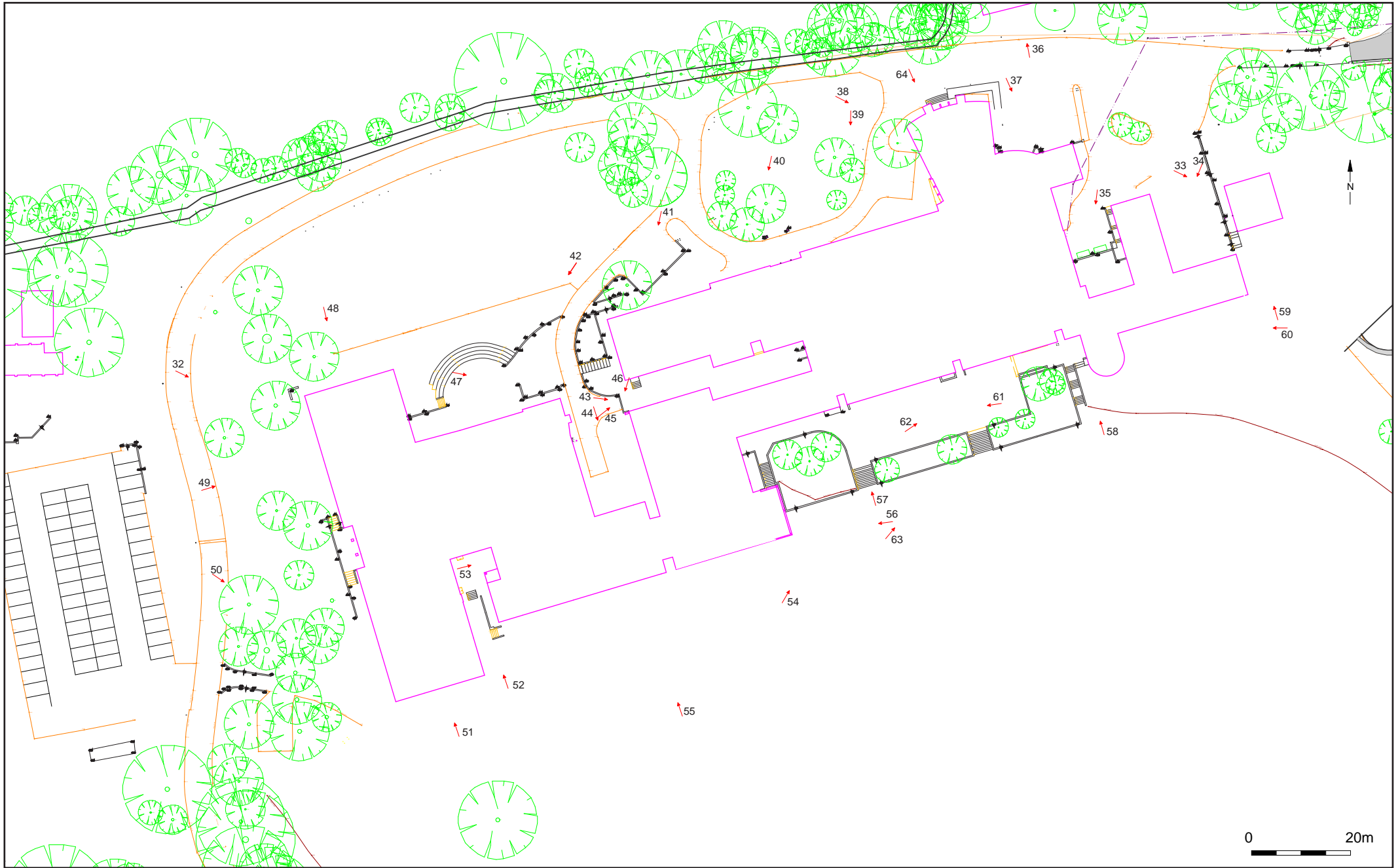
© Archaeology South-East		The Grove School, St Leonards-on-Sea		Fig. 11
Project Ref: 6959	Sept 2014	Extract from the 1966 Ordnance Survey map		
Report Ref: 2014304	Drawn by: EMH			



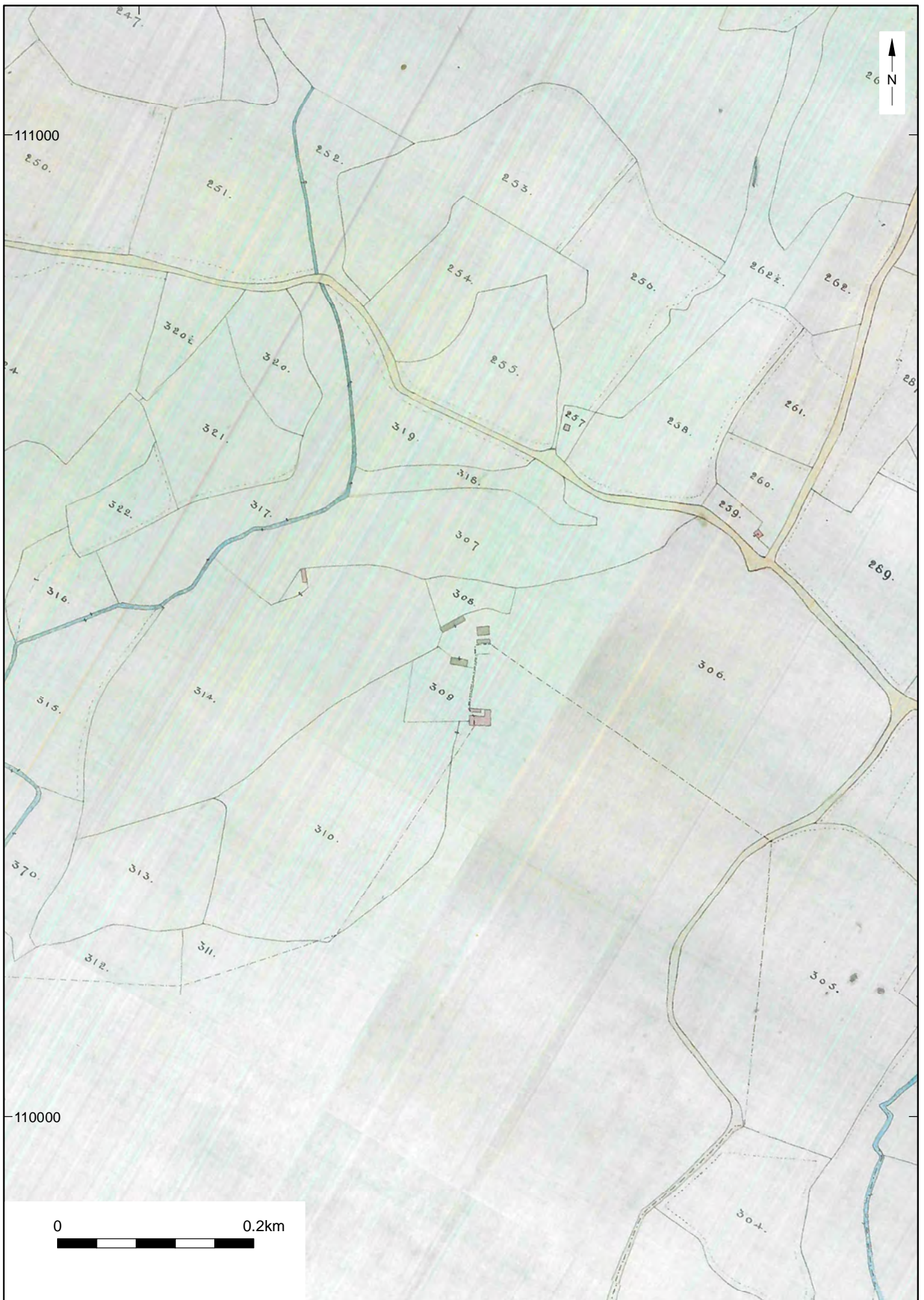
Site

Contains Ordnance Survey data
Crown copyright and database right 2014

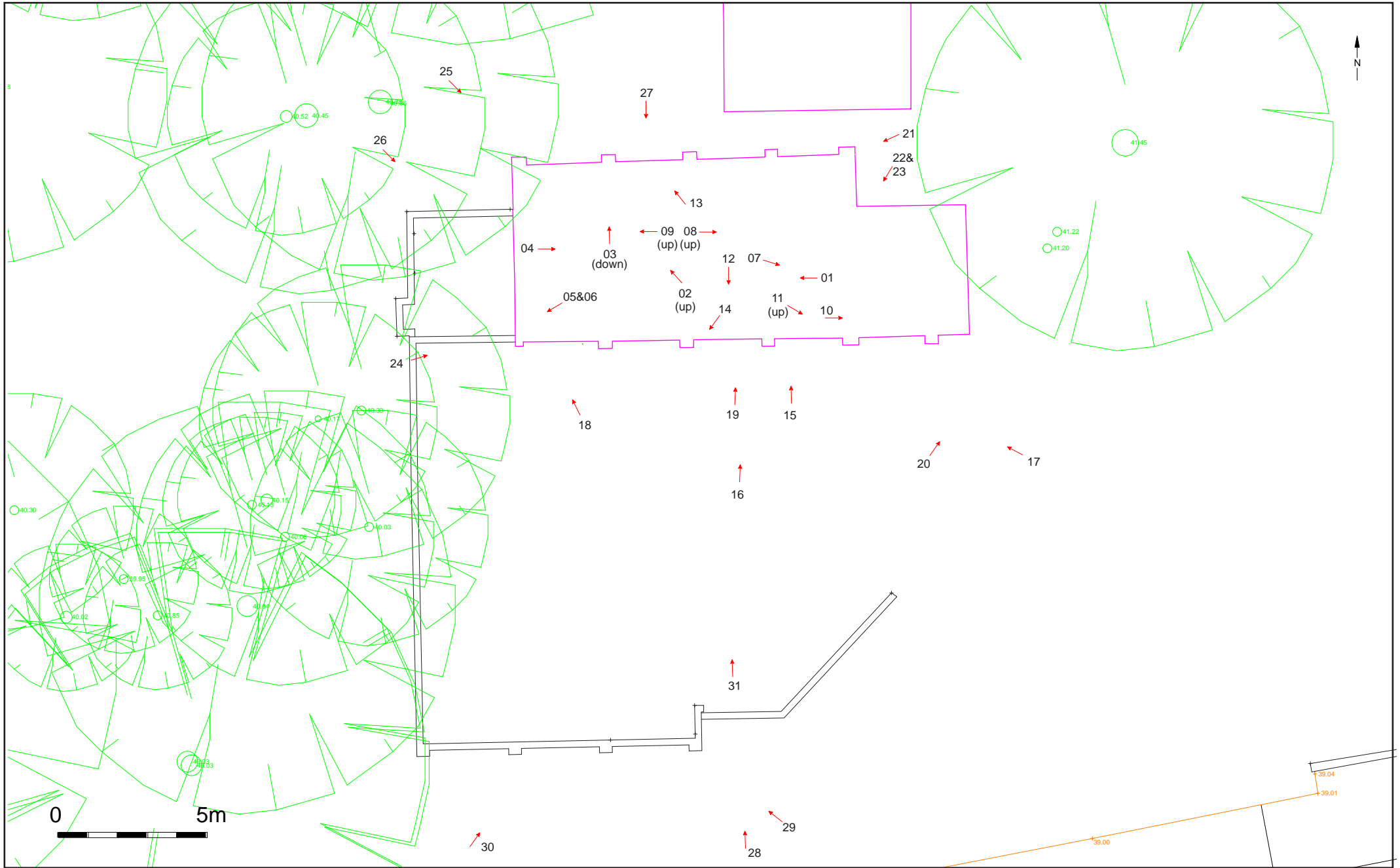
© Archaeology South-East		The Grove School, St Leonards-on-Sea		Fig. 12
Project Ref: 6959	Sept 2014	Extract from the 1987-9 Ordnance Survey map		
Report Ref: 2014304	Drawn by: EMH			



© Archaeology South-East		The Grove, St Leonard's, Hastings	Fig. 13
Project Ref: 6959	September 2014	Photograph Locations, school	
Report Ref: 2014304	Drawn by: MGH		



© Archaeology South-East		The Grove, St Leonard's, Hastings	Fig. 14
Project Ref: 6959	Sep 2014	Hollington tithe map 1847 (extract)	
Report Ref: 2014304	Drawn by: HG		



© Archaeology South-East		The Grove, St Leonard's, Hastings	Fig. 15
Project Ref: 6959	September 2014	Photograph locations, stable	
Report Ref: 2014304	Drawn by: MGH		

Sussex Office

Units 1 & 2
2 Chapel Place
Portslade
East Sussex BN41 1DR
tel: +44(0)1273 426830
email: fau@ucl.ac.uk
web: www.archaeologyse.co.uk

Essex Office

The Old Magistrates Court
79 South Street
Braintree
Essex CM7 3QD
tel: +44(0)1376 331470
email: fau@ucl.ac.uk
web: www.archaeologyse.co.uk

London Office

Centre for Applied Archaeology
UCL Institute of Archaeology
31-34 Gordon Square
London WC1H 0PY
tel: +44(0)20 7679 4778
email: fau@ucl.ac.uk
web: www.ucl.ac.uk/caa

