



## Large-Scale National Grid Data Published 1993

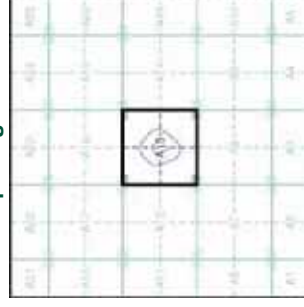
Source map scale - 1:1,250

Large Scale National Grid Data' superseded SIM cards (Ordnance Survey's Survey of Information Maps) in 1992, and continued to be produced until 1999. These maps were the first of a series of digital maps that provide detailed information on buildings and roads, but tend to show less topographic features such as vegetation. These maps were produced at both 1:2,500 and 1:1,250 scales.

### Map Name(s) and Date(s)

Map Name	Date
TRAVERTHE - 1:2,500 - 1993	1993
TRAVERTHE - 1:1,250 - 1993	1993
TRAVERTHE - 1:2,500 - 1993	1993
TRAVERTHE - 1:1,250 - 1993	1993

### Historical Map - Segment A13



### Order Details

Order Number: 63755679\_1\_1  
Customer Ref: 13214X  
National Grid Reference: 601330, 162240  
Slice: A  
Site Area (Ha): 1.02  
Search Buffer (m): 100

### Site Details

Land at Ham Road, Faversham, Kent



Tel: 0844 844 9952  
Fax: 0844 844 9951  
Web: www.envirocheck.co.uk

# Historical Mapping Legends

## Ordnance Survey County Series 1:10,560

Other Pits	Orchard	Marsh	Brushwood	Rough Pasture	Trigonometrical Station	Bench Mark	Well, Spring, Boundary Post			Instrumental Contour	Fenced Un-Fenced	Fenced Un-Fenced	Raised Road	Railway over River	Level Crossing	Road over Stream	
Gravel Pit	Quarry	Oslers	Mixed Wood	Fir	Arrow denotes flow of water	Site of Antiquities	Pump, Guide Post, Signal Post	Surface Level	Sketched Contour	Fenced Un-Fenced	Fenced Un-Fenced	Sunken Road	Road over Railway	Railway over Road	Road over River or Canal	Road over Stream	
Sand Pit	Shingle	Reeds	Deciduous	Furze	Trigonometrical Station	Bench Mark	Well, Spring, Boundary Post		Instrumental Contour	Fenced Un-Fenced	Fenced Un-Fenced	Raised Road	Railway over River	Level Crossing	Road over Stream		

## Ordnance Survey Plan 1:10,000

Gravel Pit	Disused Pit or Quarry	Lake, Loch or Pond	Boulders	Non-Coniferous Trees	Scrub	Health	Reeds	Direction of Flow of Water	Glasshouse	Electricity Transmission Line	Pole								
Chalk Pit, Clay Pit or Quarry	Sand Pit	Refuse or Slag Heap	Dunes	Coniferous Trees	Orchard	Bracken	Marsh	Building	Glasshouse	Electricity Transmission Line	Pole								

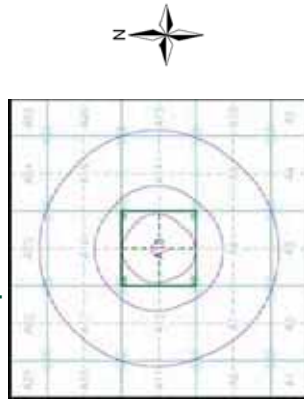
## 1:10,000 Raster Mapping

Refuse tip or slag heap	Rock (scattered)	Boulders (scattered)	Mud	Sand Pit	Top of cliff	Underground detail	Narrow gauge railway	Single track railway	Civil, parish or community boundary	Constituency boundary	Non-coniferous trees	Coniferous trees	Positioned tree	Coppice or Osiers	Health	Marsh, Salt Marsh or Reeds	Flow arrows	Mean low water (springs)	Electricity transmission line (with poles)	Triangulation station	Pylon, flare stack or lighting tower	Glasshouse	Important Building
Gravel Pit	Rock	Boulders	Shingle	Sand	Slopes	General detail	Overhead detail	Multi-track railway	County boundary (England only)	District, Unitary, Metropolitan, London Borough boundary	Area of wooded vegetation	Non-coniferous trees (scattered)	Coniferous trees (scattered)	Orchard	Rough Grassland	Scrub	Water feature	Mean high water (springs)	Telephone line (where shown)	Bench mark (where shown)	Point feature (e.g. Guide Post or Mile Stone)	Site of (anti)quity	General Building

## Historical Mapping & Photography included:

Mapping Type	Scale	Date	Pg
Kent	1:10,560	1877	2
Kent	1:10,560	1896	3
Kent	1:10,560	1908 - 1909	4
Kent	1:10,560	1938	5
Historical Aerial Photography	1:10,560	1947 - 1949	6
Ordnance Survey Plan	1:10,000	1960 - 1961	7
Ordnance Survey Plan	1:10,000	1967	8
Ordnance Survey Plan	1:10,000	1976	9
10K Raster Mapping	1:10,000	1984 - 1987	10
VectorMap Local	1:10,000	2014	12

## Historical Map - Slice A



## Order Details

Order Number: 63755679\_1\_1  
 Customer Ref: 13214X  
 National Grid Reference: 601330, 162240  
 Slice: A  
 Site Area (Ha): 1.02  
 Search Buffer (m): 1000

## Site Details

Land at Ham Road, Faversham, Kent



Tel: 0844 844 9952  
 Fax: 0844 844 9951  
 Web: www.environcheck.co.uk

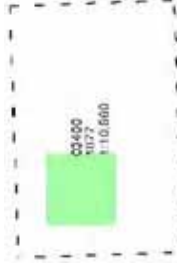
**Kent**

**Published 1877**

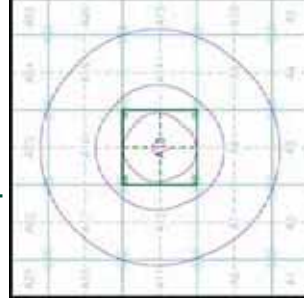
**Source map scale - 1:10,560**

The historical maps shown were reproduced from maps predominantly held in the archives for England, Wales and Scotland in the early 1940's. In 1854 the Ordnance Survey was established to produce maps for military purposes and to update the 1:10,560 maps. The published data given therefore are often some years later than the surveyed date. Before 1938, all OS maps were based on the Cassini Projection, with independent surveys in outlying county or group of counties, giving rise to significant inaccuracies in outlying areas. In the late 1940's, a Provisional Edition was produced, which updated the 1:10,560 mapping from a number of sources. The maps appear unfinished - with all military camps and other strategic sites removed. These maps were initially overprinted with the National Grid. In 1970, the first 1:10,000 maps were produced using the Transverse Mercator Projection. The revision process continued until recently, with new editions appearing every 10 years or so for urban areas.

**Map Name(s) and Date(s)**



**Historical Map - Slice A**

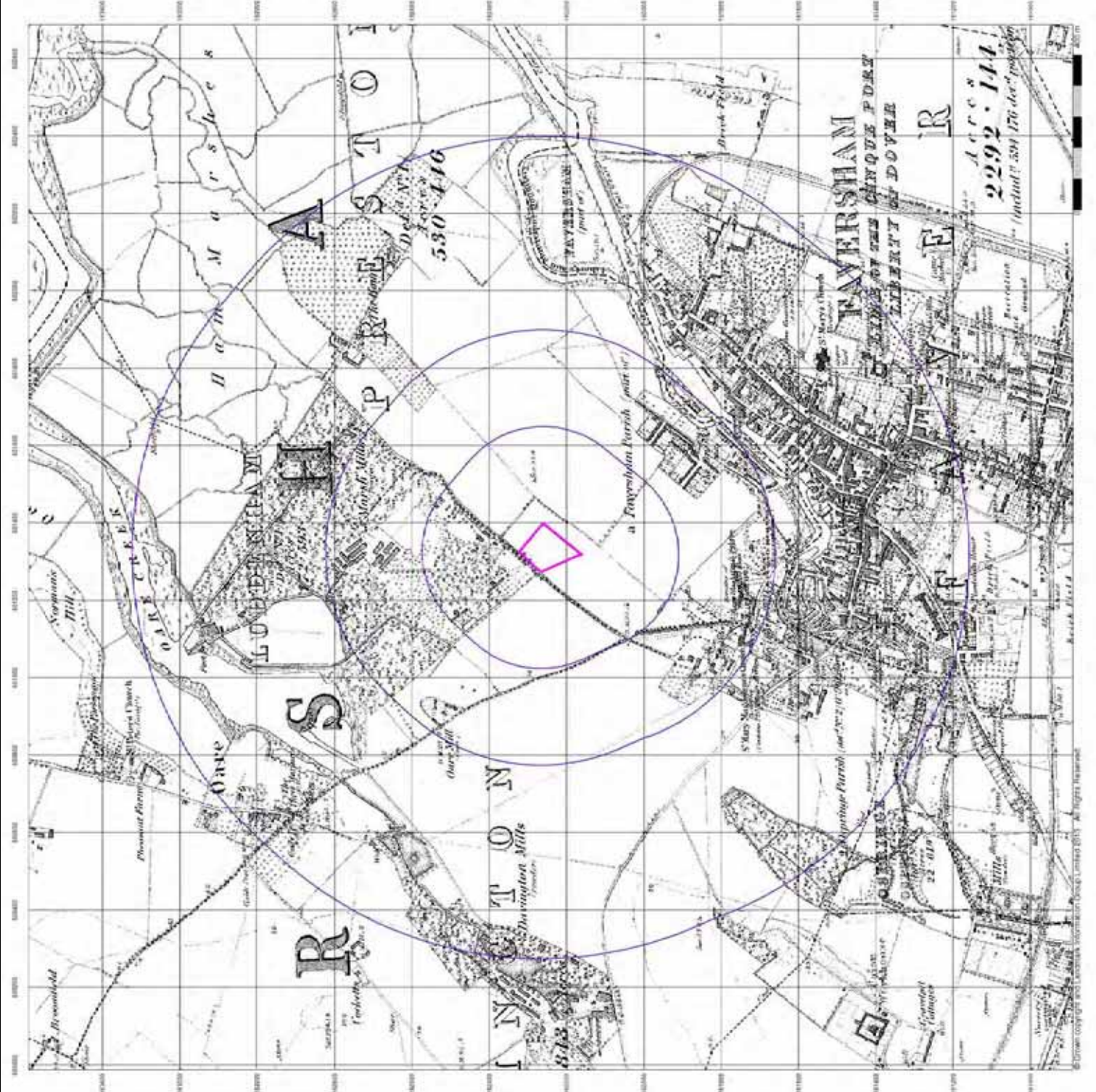


**Order Details**

Order Number: 63755679\_1\_1  
 Customer Ref: 13214X  
 National Grid Reference: 601330, 162240  
 Slice: A  
 Site Area (Ha): 1.02  
 Search Buffer (m): 1000

**Site Details**

Land at Ham Road, Faversham, Kent



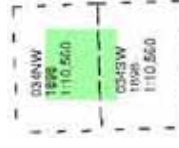
**Kent**

**Published 1898**

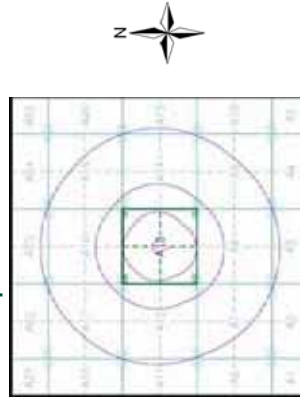
**Source map scale - 1:10,560**

The historical maps shown were reproduced from maps predominantly held in the archives of the Ordnance Survey in the United Kingdom. The maps were first published in 1898 and were reproduced in 1940. The maps were used to update the 1:10,560 maps. The published data given therefore are often some years later than the surveyed date. Before 1938, all OS maps were based on the Cassini Projection, with independent surveys of a single county or group of counties, giving rise to significant inaccuracies in outlying areas. In the late 1940's, a Provisional Edition was produced, which updated the 1:10,560 mapping from a number of sources. The maps appear unfinished - with all military camps and other strategic sites removed. These maps were initially overprinted with the National Grid. In 1970, the first 1:10,000 maps were produced using the Transverse Mercator Projection. The revision process continued until recently, with new editions appearing every 10 years or so for urban areas.

**Map Name(s) and Date(s)**



**Historical Map - Slice A**

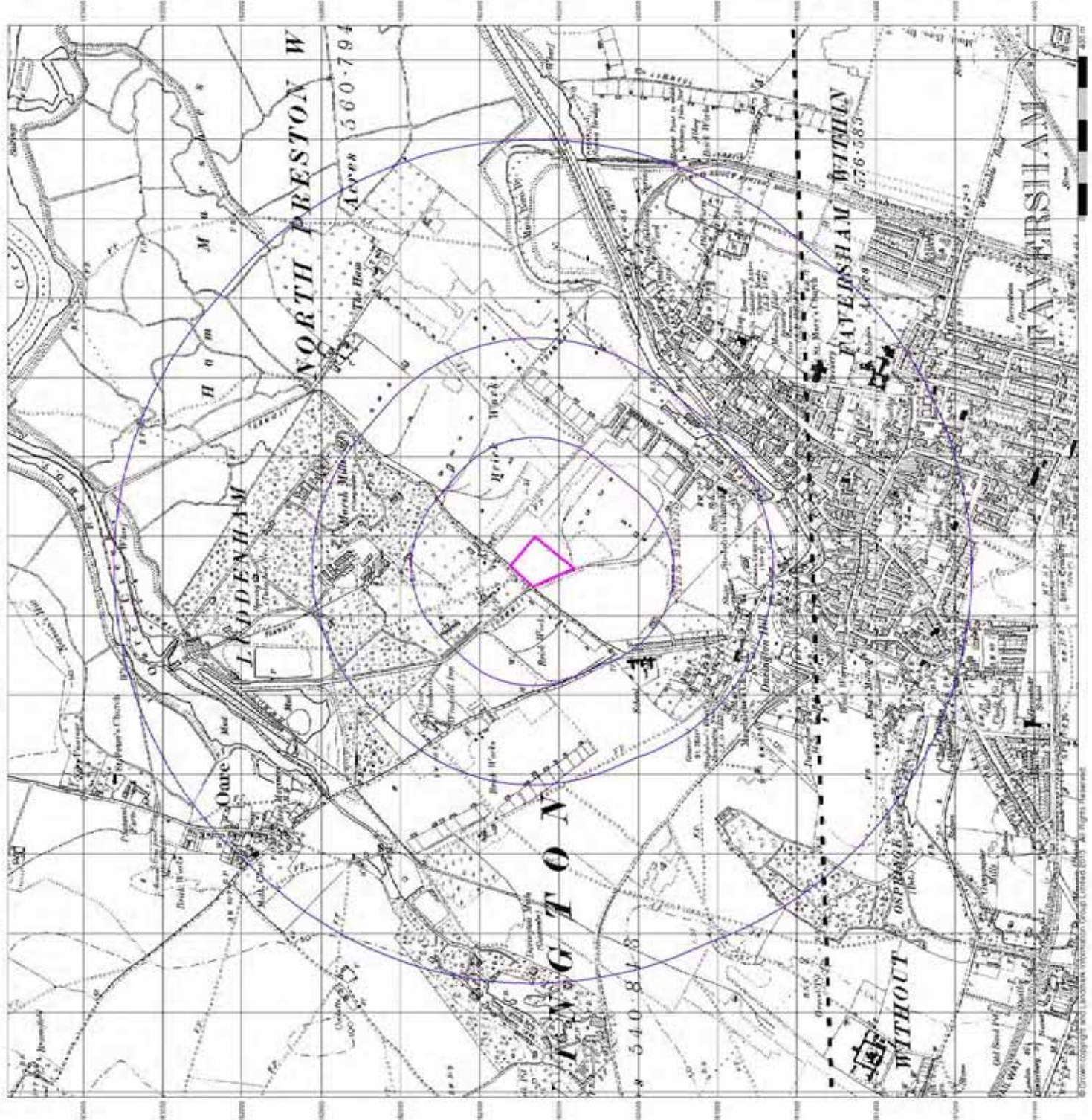


**Order Details**

Order Number: 63755679\_1\_1  
 Customer Ref: 13214X  
 National Grid Reference: 601330, 162240  
 Slice: A  
 Site Area (Ha): 1.02  
 Search Buffer (m): 1000

**Site Details**

Land at Ham Road, Faversham, Kent



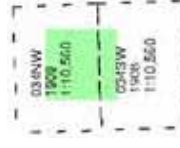
**Kent**

**Published 1908 - 1909**

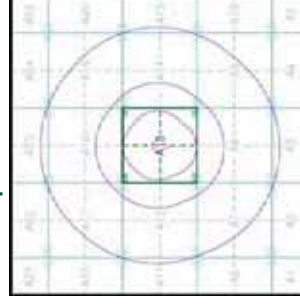
**Source map scale - 1:10,560**

The historical maps shown were reproduced from maps predominantly held in the archives of the Ordnance Survey in the United Kingdom. The maps were first published in 1908 and 1909. The maps were reproduced from the 1:10,560 maps. The published data shown therefore are often some years later than the surveyed date. Before 1938, all OS maps were based on the Cassini Projection, with independent surveys in a single county or group of counties, giving rise to significant inaccuracies in outlying areas. In the late 1940's, a Provisional Edition was produced, which updated the 1:10,560 mapping from a number of sources. The maps appear unfinished - with all military camps and other strategic sites removed. These maps were initially overprinted with the National Grid. In 1970, the first 1:10,000 maps were produced using the Transverse Mercator Projection. The revision process continued until recently, with new editions appearing every 10 years or so for urban areas.

**Map Name(s) and Date(s)**



**Historical Map - Slice A**

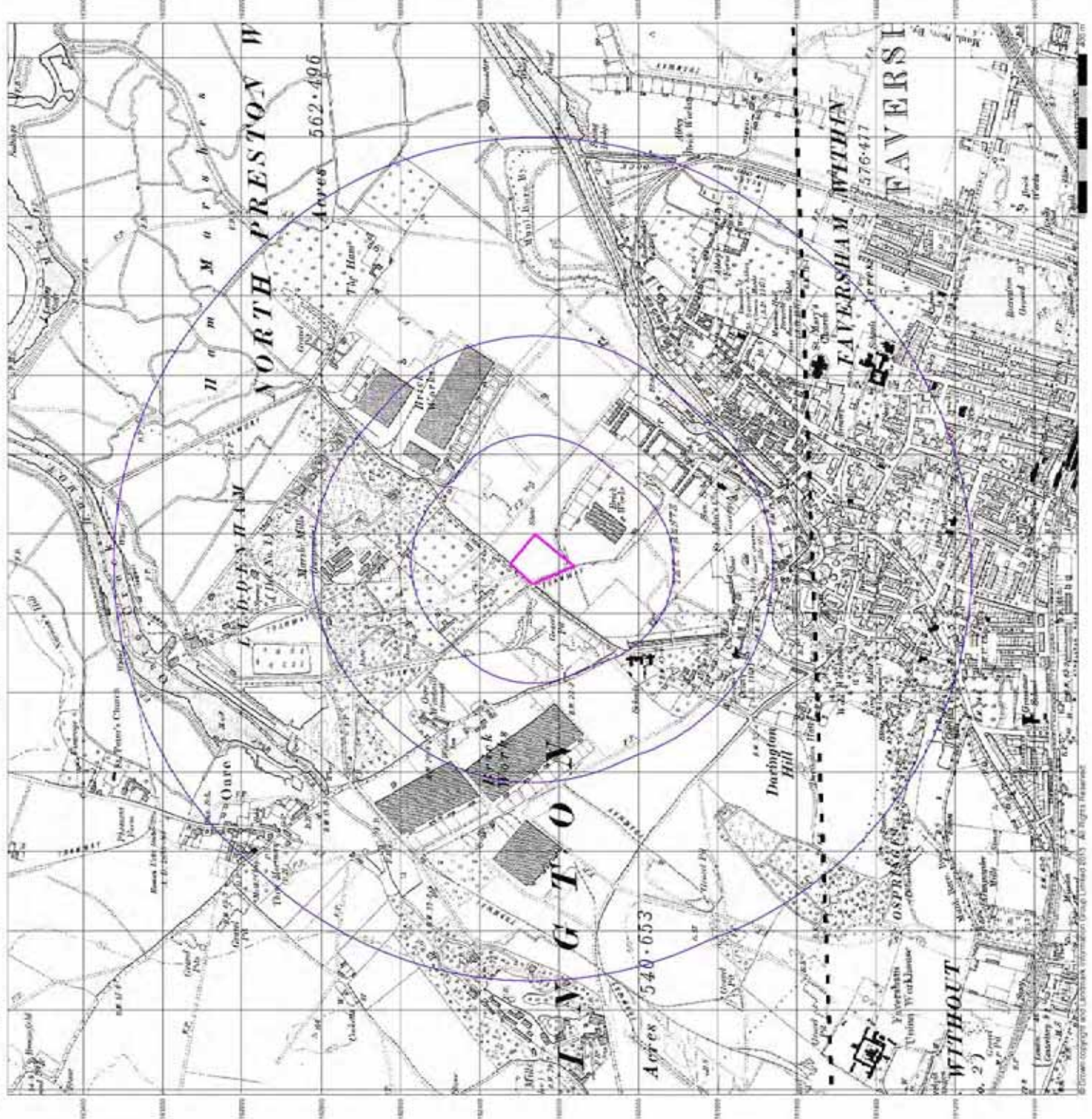


**Order Details**

Order Number: 63755679\_1\_1  
 Customer Ref: 13214X  
 National Grid Reference: 601330, 162240  
 Site: A  
 Site Area (Ha): 1.02  
 Search Buffer (m): 1000

**Site Details**

Land at Ham Road, Faversham, Kent



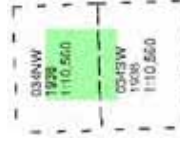
## Kent

### Published 1938

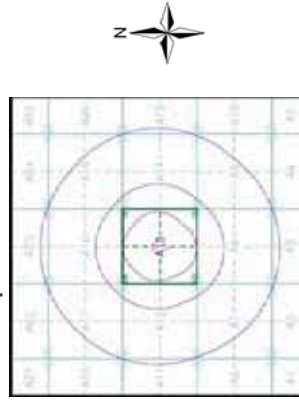
### Source map scale - 1:10,560

The historical maps shown were reproduced from maps predominantly held in the archives of the Ordnance Survey in the United Kingdom. The maps were scanned at a resolution of 1:2,500 and then reprojected to the Transverse Mercator projection used to update the 1:10,560 maps. The published data shown therefore are often some years later than the surveyed date. Before 1938, all OS maps were based on the Cassini Projection, with independent surveys of a single county or group of counties, giving rise to significant inaccuracies in outlying areas. In the late 1940's, a Provisional Edition was produced, which updated the 1:10,560 mapping from a number of sources. The maps appear unfinished - with all military camps and other strategic sites removed. These maps were initially overprinted with the National Grid. In 1970, the first 1:10,000 maps were produced using the Transverse Mercator Projection. The revision process continued until recently, with new editions appearing every 10 years or so for urban areas.

### Map Name(s) and Date(s)



### Historical Map - Slice A

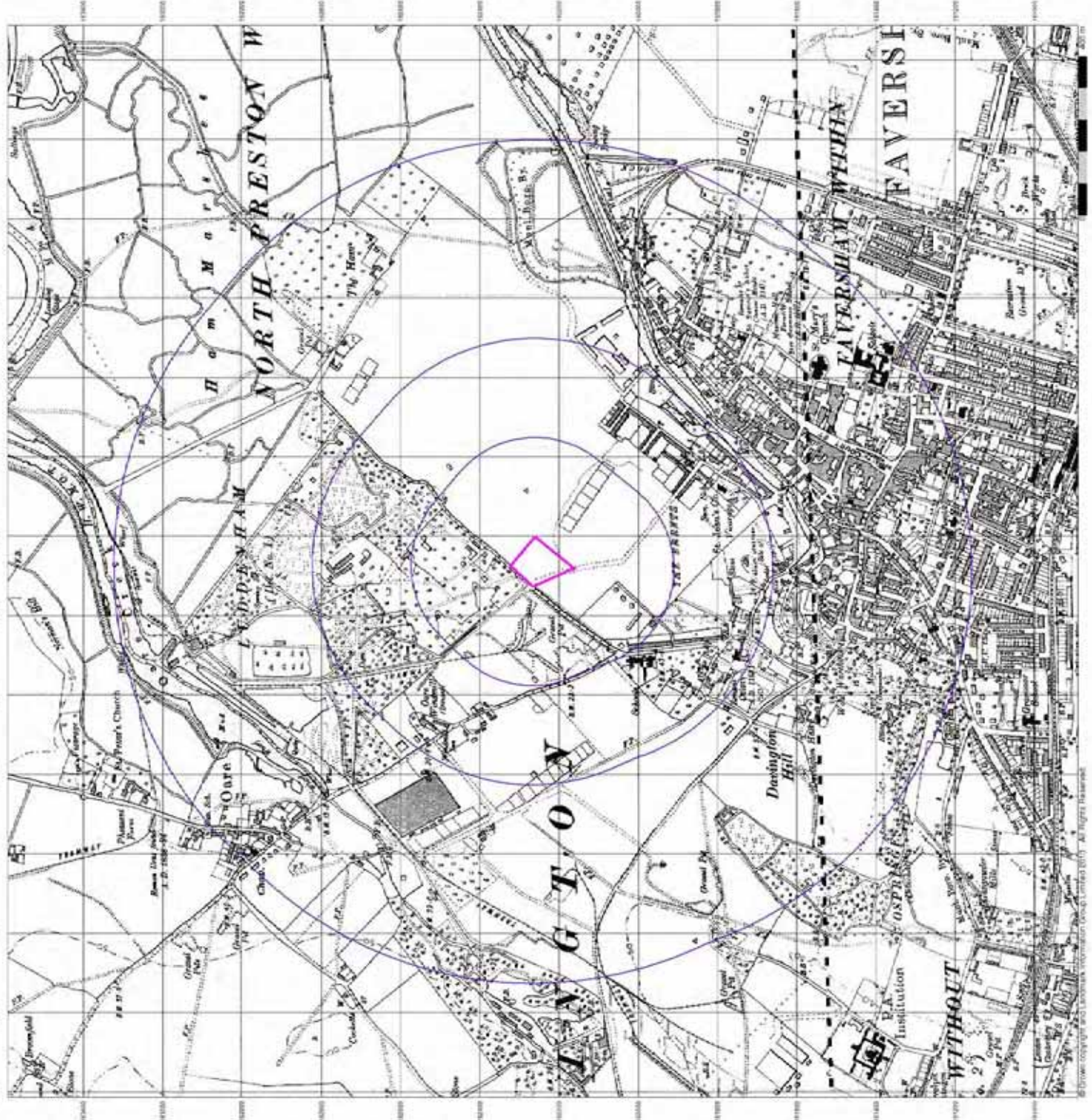


### Order Details

Order Number: 63755679\_1\_1  
 Customer Ref: 13214X  
 National Grid Reference: 601330, 162240  
 Slice: A  
 Site Area (Ha): 1.02  
 Search Buffer (m): 1000

### Site Details

Land at Ham Road, Faversham, Kent





# Historical Aerial Photography Published 1947 - 1949

## Source map scale - 1:10,560

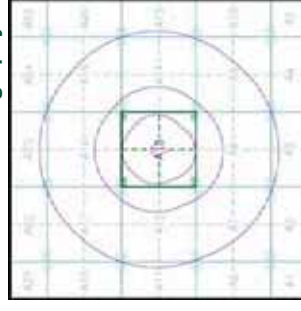
The Historical Aerial Photos were produced by the Ordnance Survey at a scale of 1:12,500 and 1:10,560. The Aerial Photography was taken in 1944 and 1945, as well as being used for the preparation of conventional maps due to post war resource shortages. New security measures in the 1950's meant that every photograph was rechecked for potentially unsafe information with security sites replaced by fake fields or clouds. The original editions were withdrawn and only later made available after a period of fifty years although due to the accuracy of the editing, without viewing both revisions it is not easy to spot the edits. Where available Landmark have included both revisions.

© Landmark Information Group and/or Data Suppliers 2010.

### Map Name(s) and Date(s)

TOPIEGE	1949	1:10,560
TR06SW	1947	1:10,560

### Historical Aerial Photography - Slice A



### Order Details

Order Number: 63755679\_1\_1  
 Customer Ref: 13214X  
 National Grid Reference: 601330, 162240  
 Slice: A  
 Site Area (Ha): 1.02  
 Search Buffer (m): 1000

### Site Details

Land at Ham Road, Faversham, Kent



Tel: 0844 844 9952  
 Fax: 0844 844 9951  
 Web: www.envisirock.co.uk



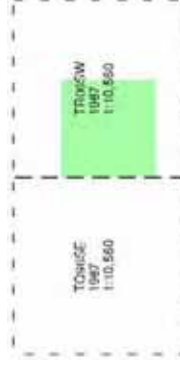


**Ordnance Survey Plan  
Published 1967**

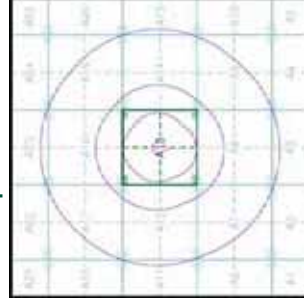
**Source map scale - 1:10,000**

The historical maps shown were reproduced from maps predominantly held in the Ordnance Survey archives for England, Wales and Scotland in the 1940's. In 1954 the OS adopted the Transverse Mercator projection for its maps. The maps shown are used to update the 1:10,000 maps. The published data given therefore are often some years later than the surveyed date. Before 1938, all OS maps were based on the Cassini Projection, with independent surveys in cutting county or group of counties, giving rise to significant inaccuracies in cutting areas. In the late 1940's, a Provisional Edition was produced, which updated the 1:10,000 mapping from a number of sources. The maps appear unfinished - with all military camps and other strategic sites removed. These maps were initially overprinted with the National Grid. In 1970, the first 1:10,000 maps were produced using the Transverse Mercator Projection. The revision process continued until recently, with new editions appearing every 10 years or so for urban areas.

**Map Name(s) and Date(s)**



**Historical Map - Slice A**

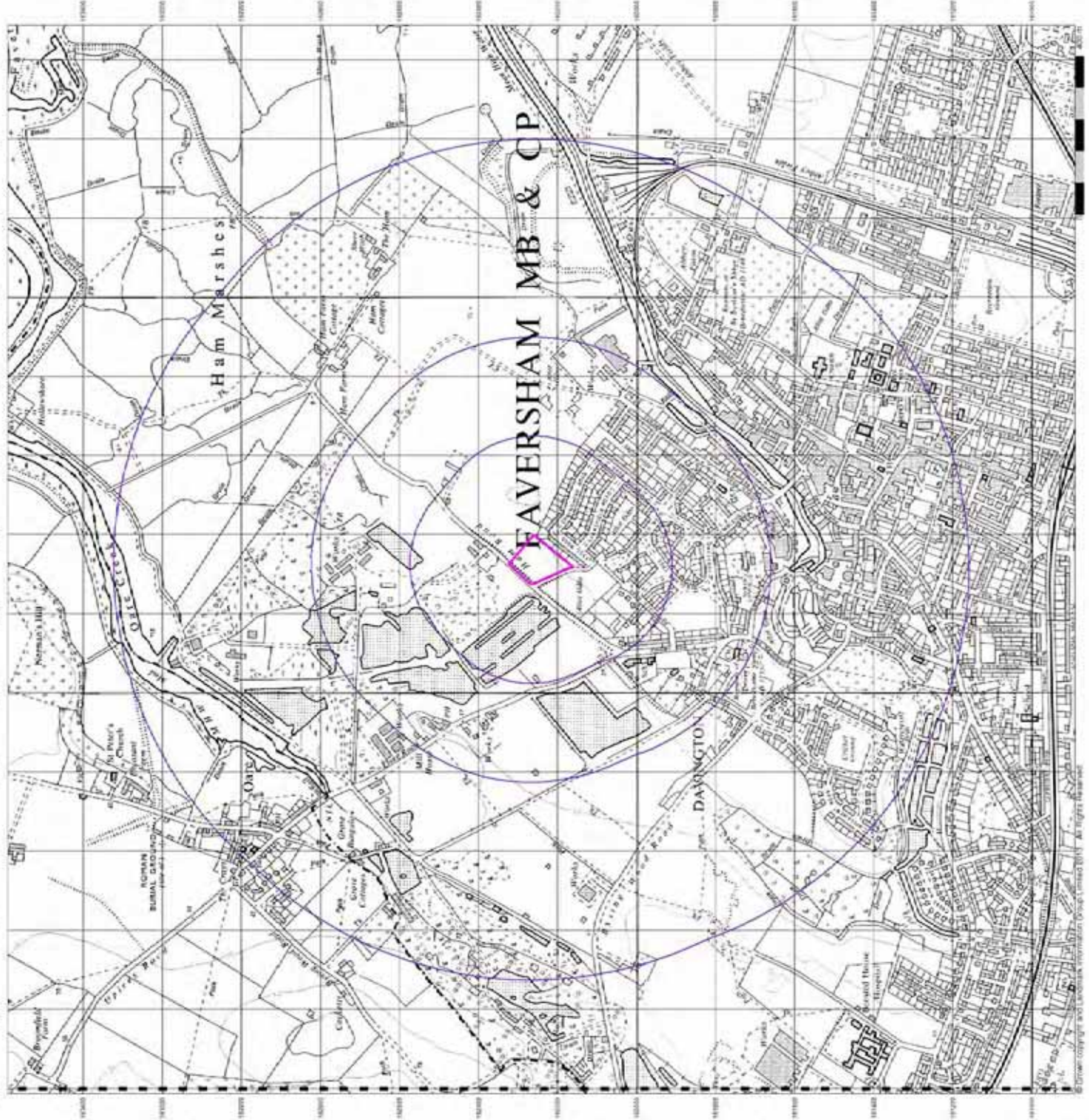


**Order Details**

Order Number: 63755679\_1\_1  
 Customer Ref: 13214X  
 National Grid Reference: 601330, 162240  
 Slice: A  
 Site Area (Ha): 1.02  
 Search Buffer (m): 1000

**Site Details**

Land at Ham Road, Faversham, Kent



**Ordnance Survey Plan  
Published 1976**

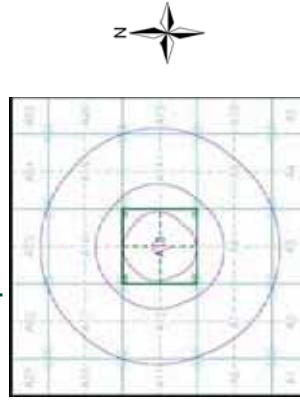
**Source map scale - 1:10,000**

The historical maps shown were reproduced from maps predominantly held in the Ordnance Survey archives for England, Wales and Scotland in the 1940's. In 1954 the 1:2,500 maps were updated for the urban areas. The maps published are used to update the 1:10,000 maps. The published data given therefore are often some years later than the surveyed date. Before 1938, all OS maps were based on the Cassini Projection, with independent surveys of a single county or group of counties, giving rise to significant inaccuracies in outlying areas. In the late 1940's, a Provisional Edition was produced, which updated the 1:10,000 mapping from a number of sources. The maps appear unfinished - with all military camps and other strategic sites removed. These maps were initially overprinted with the National Grid. In 1970, the first 1:10,000 maps were produced using the Transverse Mercator Projection. The revision process continued until recently, with new editions appearing every 10 years or so for urban areas.

**Map Name(s) and Date(s)**



**Historical Map - Slice A**

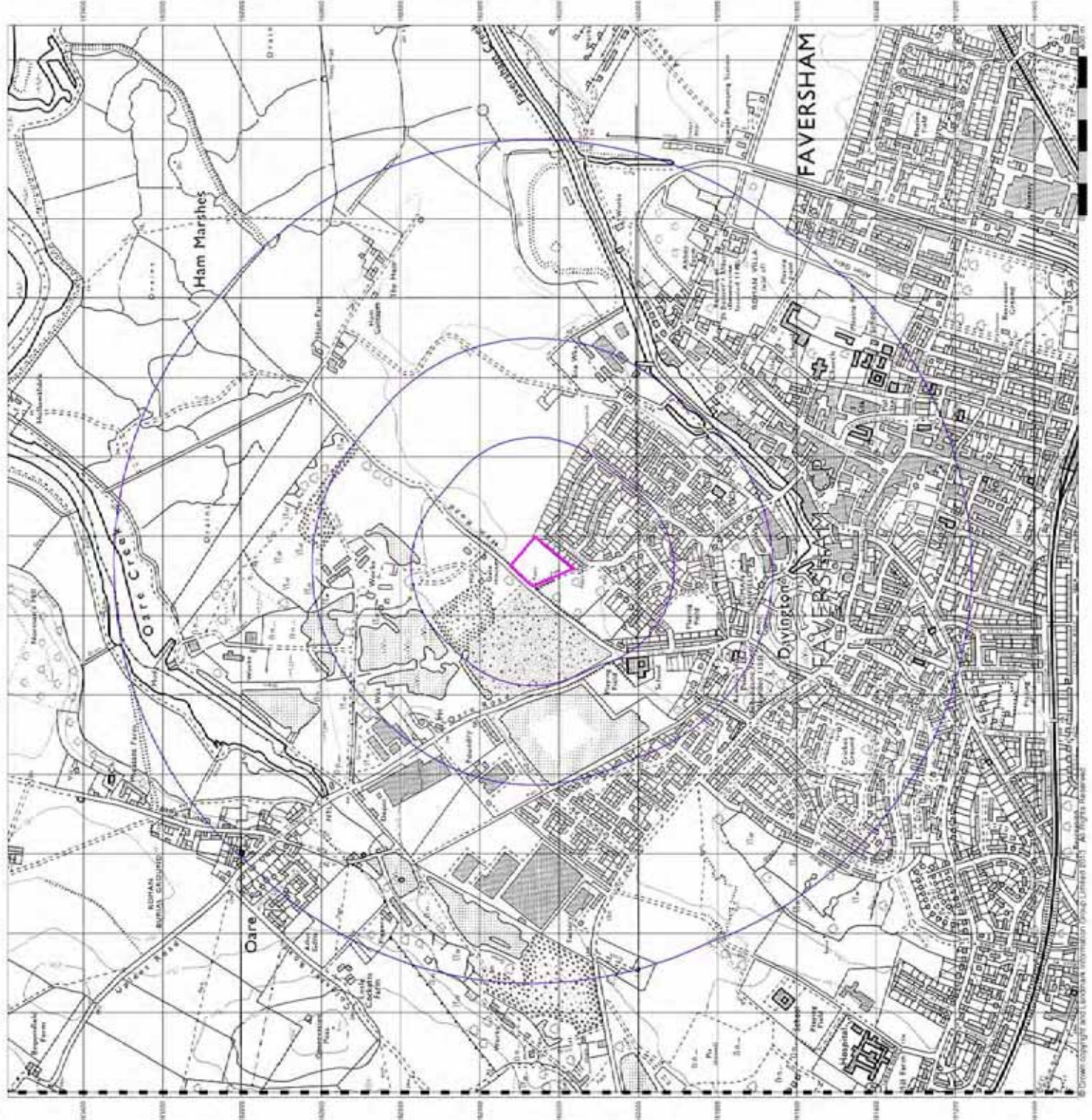


**Order Details**

Order Number: 63755679\_1\_1  
 Customer Ref: 13214X  
 National Grid Reference: 601330, 162240  
 Slice: A  
 Site Area (Ha): 1.02  
 Search Buffer (m): 1000

**Site Details**

Land at Ham Road, Faversham, Kent

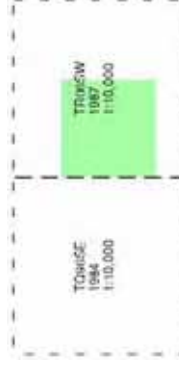


**Ordnance Survey Plan  
Published 1984 - 1987**

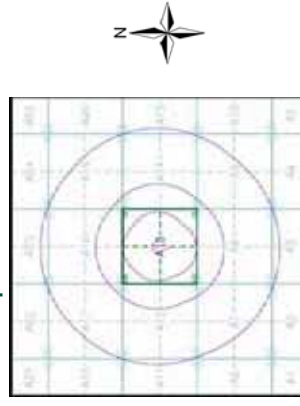
**Source map scale - 1:10,000**

The historical maps shown were reproduced from maps predominantly held in the archives for England, Wales and Scotland in the 1940's. In 1984 the OS adopted a new datum for the UK, and the maps were updated to use the 1:10,000 scale. The published data given therefore are often some years later than the surveyed date. Before 1938, all OS maps were based on the Cassini Projection, with independent surveys of a single county or group of counties, giving rise to significant inaccuracies in outlying areas. In the late 1940's, a Provisional Edition was produced, which updated the 1:10,000 mapping from a number of sources. The maps appear unfinished - with all military camps and other strategic sites removed. These maps were initially overprinted with the National Grid. In 1970, the first 1:10,000 maps were produced using the Transverse Mercator Projection. The revision process continued until recently, with new editions appearing every 10 years or so for urban areas.

**Map Name(s) and Date(s)**



**Historical Map - Slice A**

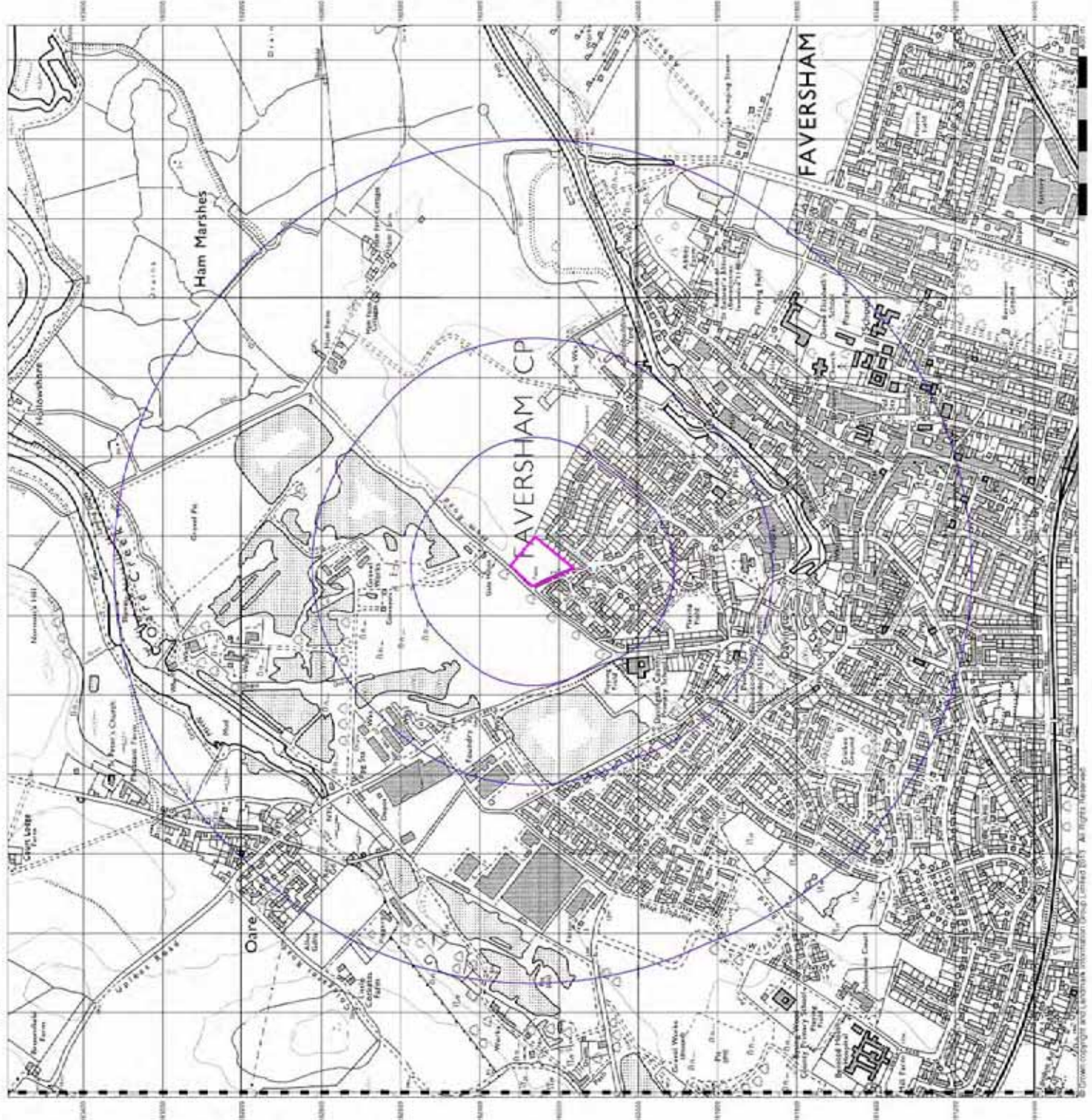


**Order Details**

Order Number: 63755679\_1\_1  
 Customer Ref: 13214X  
 National Grid Reference: 601330, 162240  
 Slice: A  
 Site Area (Ha): 1.02  
 Search Buffer (m): 1000

**Site Details**

Land at Ham Road, Faversham, Kent





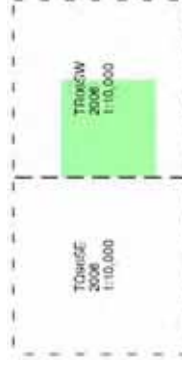
## 10k Raster Mapping

Published 2006

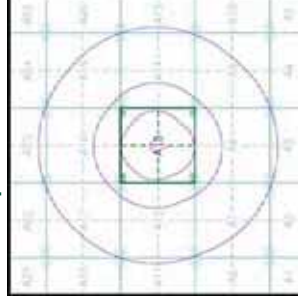
Source map scale - 1:10,000

The historical maps shown were produced from the Ordnance Survey's 1:10,000 scale maps. These maps are produced from aerial photography which was taken in 1970. The data is highly detailed showing buildings, fences and field boundaries as well as all roads, tracks and paths. Road names are also included together with the relevant road number and classification. Boundary information depicted includes county, unitary authority, district, civil parish and constituency.

### Map Name(s) and Date(s)



### Historical Map - Slice A



### Order Details

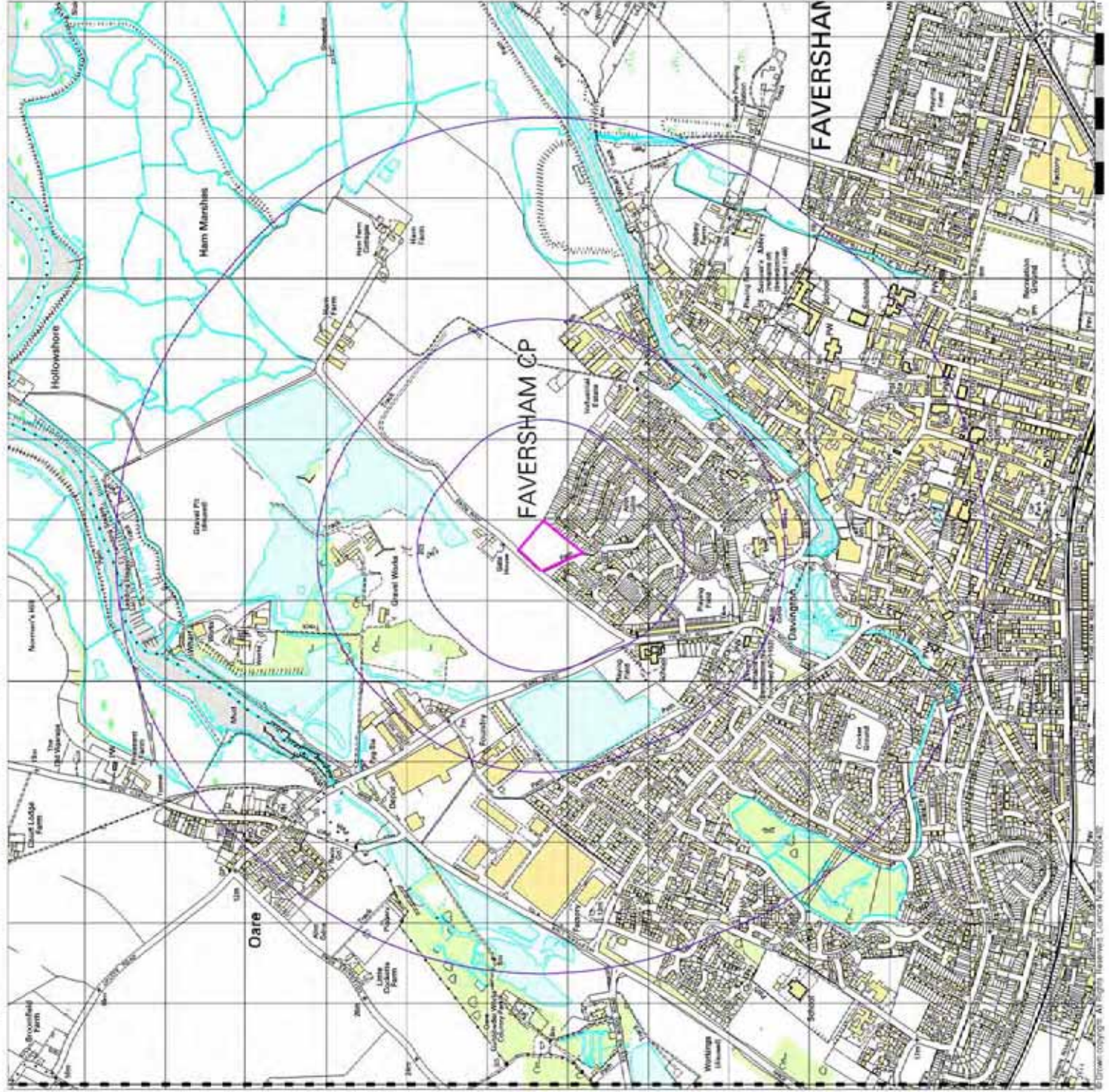
Order Number: 63755679\_1\_1  
Customer Ref: 13214X  
National Grid Reference: 601330, 162240  
Slice: A  
Site Area (Ha): 1.02  
Search Buffer (m): 1000

### Site Details

Land at Ham Road, Faversham, Kent



Tel: 0844 844 9952  
Fax: 0844 844 9951  
Web: www.envirodeck.co.uk



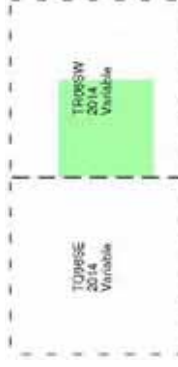


## VectorMap Local Published 2014

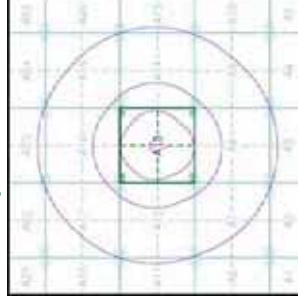
Source map scale - 1:10,000

VectorMap Local (Raster) is Ordnance Survey's highest detailed 'background' mapping product. These maps are produced from OS's VectorMap Local, a vector data set at a scale of 1:10,000, covering the whole of Great Britain. It has been designed for creating graphical maps. OS VectorMap Local is derived from large-scale information surveyed at 1:250 scale (covering major towns and cities), 1:2500 scale (smaller towns, villages and developed rural areas), and 1:10,000 scale (mountain, moorland and river estuary areas).

### Map Name(s) and Date(s)



### Historical Map - Slice A



### Order Details

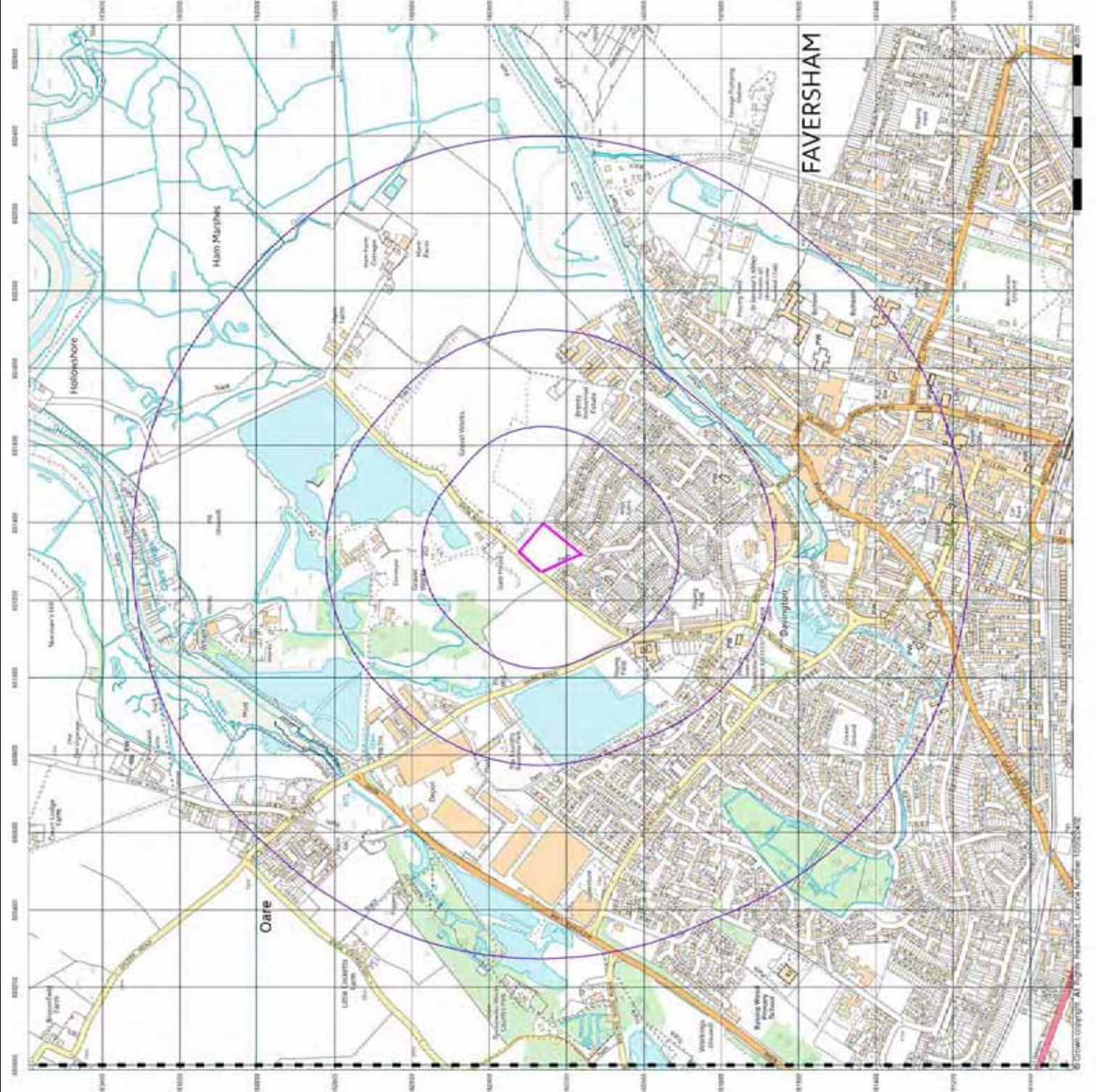
Order Number: 63755679\_1\_1  
Customer Ref: 13214X  
National Grid Reference: 601330, 162240  
Slice: A  
Site Area (Ha): 1.02  
Search Buffer (m): 1000

### Site Details

Land at Ham Road, Faversham, Kent



Tel: 0844 844 9952  
Fax: 0844 844 9951  
Web: www.envirocheck.co.uk



Appendix D  
EA Landfill Gas Monitoring Data  
KCC Closed Landfill Risk Assessment

---

EA Ham Farm In Waste Gas monitoring Data - January to March 2014

Site	Sample Point	Date	LEL (%)	CH4 (%)	CO2 (%)	O2 (%)	Rel Pressure (mb)	Gas borehole flow (ltrs/hr)	Barometric Pressure*
Ham Farm	HAM FARM GAS GS01	08/01/2014	0.0	0.0	0.6	20.7	0.00	-0.02	1015
Ham Farm	HAM FARM GAS GS02	08/01/2014	0.0	0.0	0.0	20.9	0.00	-0.01	
Ham Farm	HAM FARM GAS GS03	08/01/2014	0.0	0.0	0.0	20.7	0.00	0.00	
Ham Farm	HAM FARM GAS GS04	08/01/2014	0.0	0.0	0.0	20.9	0.00	0.00	
Ham Farm	HAM FARM GAS GS01	06/02/2014	0.0	0.0	0.3	20.8	0.00	-0.02	992
Ham Farm	HAM FARM GAS GS02	06/02/2014	0.0	0.0	0.0	20.9	0.00	-0.01	
Ham Farm	HAM FARM GAS GS03	06/02/2014	0.0	0.0	0.0	21.0	0.00	0.00	
Ham Farm	HAM FARM GAS GS04	06/02/2014	0.0	0.0	0.0	21.0	0.00	0.00	
Ham Farm	HAM FARM GAS GS01	11/03/2014	0.0	0.0	0.6	20.6	0.00	0.00	1032
Ham Farm	HAM FARM GAS GS02	11/03/2014	0.0	0.0	0.2	20.5	0.01	0.07	
Ham Farm	HAM FARM GAS GS03	11/03/2014	0.0	0.0	0.0	20.9	0.00	0.00	
Ham Farm	HAM FARM GAS GS04	11/03/2014	0.0	0.0	0.0	20.8	0.00	0.00	

\* Barometric pressure figures for Lydd airport, from [www.wunderground.com](http://www.wunderground.com)

EA Ham Farm In Waste Gas monitoring Data - April to June 2014

Site	Sample Point	Date	LEL (%)	CH4 (%)	CO2 (%)	O2 (%)	Gas borehole flow (ltrs/hr)	Rel Pressure (mb)	Barometric Pressure*
Ham Farm	HAM FARM GAS GS01	08/04/2014	0.0	0.0	2.7	15.2	0.00	0.00	1019
Ham Farm	HAM FARM GAS GS02	08/04/2014	0.0	0.0	0.0	20.9	-0.02	0.00	
Ham Farm	HAM FARM GAS GS03	08/04/2014	0.0	0.0	2.0	18.7	0.03	0.00	
Ham Farm	HAM FARM GAS GS04	08/04/2014	0.0	0.0	0.6	20.4	0.00	0.00	
Ham Farm	HAM FARM GAS GS01	12/05/2014	0.0	0.0	3.7	13.9	0.00	0.07	1010
Ham Farm	HAM FARM GAS GS02	12/05/2014	0.0	0.0	1.9	19.0	0.00	0.05	
Ham Farm	HAM FARM GAS GS03	12/05/2014	0.0	0.0	2.0	19.2	0.00	0.00	
Ham Farm	HAM FARM GAS GS04	12/05/2014	0.0	0.0	2.0	19.7	0.00	0.00	
Ham Farm	HAM FARM GAS GS01	10/06/2014	0.0	0.0	3.2	15.0	0.00	0.07	1019
Ham Farm	HAM FARM GAS GS02	10/06/2014	0.0	0.0	2.3	14.6	0.00	0.05	
Ham Farm	HAM FARM GAS GS03	10/06/2014	0.0	0.0	2.6	18.3	0.00	-0.03	
Ham Farm	HAM FARM GAS GS04	10/06/2014	0.0	0.0	2.4	18.4	0.00	0.00	

\* Barometric pressure figures for Lydd airport, from [www.wunderground.com](http://www.wunderground.com)



EA Ham Farm In Waste Gas monitoring Data - July to September 2014

Site	Sample Point	Date	LEL (%)	CH4 (%)	CO2 (%)	O2 (%)	Gas borehole flow (ltrs/hr)	Rel Pressure (mb)	Barometric Pressure*
Ham Farm	HAM FARM GAS GS01	21/07/2014	0.0	0.0	2.1	17.6	0.00	0.00	1017
Ham Farm	HAM FARM GAS GS02	21/07/2014	0.0	0.0	2.6	14.6	0.00	-0.02	
Ham Farm	HAM FARM GAS GS03	21/07/2014	0.0	0.0	2.2	18.3	0.00	0.00	
Ham Farm	HAM FARM GAS GS04	21/07/2014	0.0	0.0	2.1	18.3	0.00	0.00	
Ham Farm	HAM FARM GAS GS01	12/08/2014	0.0	0.0	2.1	17.6	0.40	-0.08	1009
Ham Farm	HAM FARM GAS GS02	12/08/2014	0.0	0.0	5.9	8.4	0.50	0.40	
Ham Farm	HAM FARM GAS GS03	12/08/2014	0.0	0.0	2.5	18.8	0.10	-0.08	
Ham Farm	HAM FARM GAS GS04	12/08/2014	0.0	0.0	0.0	20.6	0.20	-0.18	
Ham Farm	HAM FARM GAS GS01	16/09/2014	0.0	0.0	1.8	15.3	0.00	-0.02	1014
Ham Farm	HAM FARM GAS GS02	16/09/2014	0.0	0.0	4.6	13.9	0.00	0.00	
Ham Farm	HAM FARM GAS GS03	16/09/2014	0.0	0.0	1.6	19.9	0.80	0.00	
Ham Farm	HAM FARM GAS GS04	16/09/2014	0.0	0.0	2.4	16.4	0.00	0.02	

\* Barometric pressure figures for Lydd airport, from [www.wunderground.com](http://www.wunderground.com)

EA Ham Farm In Waste Gas monitoring Data - October to December 2014

Site	Sample Point	Date	LEL (%)	CH4 (%)	CO2 (%)	O2 (%)	Gas borehole flow (ltrs/hr)	Rel Pressure (mb)	Barometric Pressure*
Ham Farm	HAM FARM GAS GS01	14/10/2014	12.0	0.6	2.5	6.3	0.00	-0.02	1005
Ham Farm	HAM FARM GAS GS02	14/10/2014	0.0	0.0	6.4	8.6	0.50	0.02	
Ham Farm	HAM FARM GAS GS03	14/10/2014	0.0	0.0	0.5	20.7	0.00	0.00	
Ham Farm	HAM FARM GAS GS04	14/10/2014	0.0	0.0	0.4	16.6	0.70	0.02	
Ham Farm	HAM FARM GAS GS01	10/11/2014	0.0	0.0	0.8	18.1	0.00	0.02	1005
Ham Farm	HAM FARM GAS GS02	10/11/2014	0.0	0.0	2.8	14.2	0.00	0.00	
Ham Farm	HAM FARM GAS GS03	10/11/2014	0.0	0.0	0.4	20	0.00	0.00	
Ham Farm	HAM FARM GAS GS04	10/11/2014	0.0	0.0	0.2	18.5	0.00	0.00	
Ham Farm	HAM FARM GAS GS01	11/12/2014	0.0	0.0	2.2	6.4	0.00	-0.02	1010
Ham Farm	HAM FARM GAS GS02	11/12/2014	0.0	0.0	0.3	20.8	0.00	0.00	
Ham Farm	HAM FARM GAS GS03	11/12/2014	0.0	0.0	0.2	19.9	0.00	-0.09	
Ham Farm	HAM FARM GAS GS04	11/12/2014	0.0	0.0	0.3	20.7	0.00	0.00	

\* Barometric pressure figures for Lydd airport, from [www.wunderground.com](http://www.wunderground.com)

EA Ham Farm Perimeter Gas monitoring Data - January to March 2014

Site	Sample Point	Data Source	Date	LEL (%)	CH4 (%)	CO2 (%)	O2 (%)
Ham Farm	HAMFGMBH01	[No Source]	08/01/2014	0.0	0.0	2.5	17.5
Ham Farm	HAMFGMBH02	[No Source]	08/01/2014	0.0	0.0	1.6	19.9
Ham Farm	HAMFGMBH03	[No Source]	08/01/2014	0.0	0.0	1.5	19.9
Ham Farm	HAMFGMBH04	[No Source]	08/01/2014	0.0	0.0	0.6	20.9
Ham Farm	HAMFGMBH05	[No Source]	08/01/2014	0.0	0.0	2.9	18.8
Ham Farm	HAMFGMBH06	[No Source]	08/01/2014	Borehole flooded			
Ham Farm	HAMFGMBH07	[No Source]	08/01/2014	Borehole flooded			
Ham Farm	HAMFGMBH08	[No Source]	08/01/2014	Borehole flooded			
Ham Farm	HAMFGMBH09	[No Source]	08/01/2014	0.0	0.0	1.7	19.7
Ham Farm	HAMFGMBH10	[No Source]	08/01/2014	0.0	0.0	1.0	20.0
Ham Farm	HAMFGMBH11	[No Source]	08/01/2014	0.0	0.0	0.2	20.8
Ham Farm	HAMFGMBH12	[No Source]	08/01/2014	0.0	0.0	2.2	13.5
Ham Farm	HAMFGMBH13	[No Source]	08/01/2014	0.0	0.0	1.8	19.5
Ham Farm	HAMFGMBH14	[No Source]	08/01/2014	0.0	0.0	0.0	20.8
Ham Farm	HAMFGMBH15	[No Source]	08/01/2014	0.0	0.0	0.3	20.1
Ham Farm	HAMFGMBH16	[No Source]	08/01/2014	0.0	0.0	0.6	20.1
Ham Farm	HAMFGMBH01	[No Source]	06/02/2014	0.0	0.0	2.8	16.0
Ham Farm	HAMFGMBH02	[No Source]	06/02/2014	0.0	0.0	1.4	19.3
Ham Farm	HAMFGMBH03	[No Source]	06/02/2014	0.0	0.0	1.6	19.0
Ham Farm	HAMFGMBH04	[No Source]	06/02/2014	0.0	0.0	0.6	19.8
Ham Farm	HAMFGMBH05	[No Source]	06/02/2014	0.0	0.0	3.0	15.9
Ham Farm	HAMFGMBH06	[No Source]	06/02/2014	0.0	0.0	0.0	20.8
Ham Farm	HAMFGMBH07	[No Source]	06/02/2014	0.0	0.0	0.2	20.6
Ham Farm	HAMFGMBH08	[No Source]	06/02/2014	Borehole flooded			
Ham Farm	HAMFGMBH09	[No Source]	06/02/2014	0.0	0.0	2.0	19.6
Ham Farm	HAMFGMBH10	[No Source]	06/02/2014	0.0	0.0	1.0	19.8
Ham Farm	HAMFGMBH11	[No Source]	06/02/2014	0.0	0.0	0.4	20.7
Ham Farm	HAMFGMBH12	[No Source]	06/02/2014	0.0	0.0	0.0	21.0
Ham Farm	HAMFGMBH13	[No Source]	06/02/2014	0.0	0.0	1.5	19.6
Ham Farm	HAMFGMBH14	[No Source]	06/02/2014	0.0	0.0	0.6	20.7
Ham Farm	HAMFGMBH15	[No Source]	06/02/2014	0.0	0.0	0.3	20.6
Ham Farm	HAMFGMBH16	[No Source]	06/02/2014	0.0	0.0	0.7	19.9
Ham Farm	HAMFGMBH01	[No Source]	11/03/2014	0.0	0.0	2.4	18.0
Ham Farm	HAMFGMBH02	[No Source]	11/03/2014	0.0	0.0	1.4	19.9
Ham Farm	HAMFGMBH03	[No Source]	11/03/2014	0.0	0.0	1.6	20.3
Ham Farm	HAMFGMBH04	[No Source]	11/03/2014	0.0	0.0	1.1	20.4
Ham Farm	HAMFGMBH05	[No Source]	11/03/2014	0.0	0.0	2.1	18.7
Ham Farm	HAMFGMBH06	[No Source]	11/03/2014	0.0	0.0	0.3	21.0
Ham Farm	HAMFGMBH07	[No Source]	11/03/2014	0.0	0.0	0.4	20.9
Ham Farm	HAMFGMBH08	[No Source]	11/03/2014	0.0	0.0	0.0	21.0
Ham Farm	HAMFGMBH09	[No Source]	11/03/2014	0.0	0.0	0.0	21.0
Ham Farm	HAMFGMBH10	[No Source]	11/03/2014	0.0	0.0	0.7	20.5
Ham Farm	HAMFGMBH11	[No Source]	11/03/2014	0.0	0.0	0.6	18.6
Ham Farm	HAMFGMBH12	[No Source]	11/03/2014	0.0	0.0	0.3	20.8
Ham Farm	HAMFGMBH13	[No Source]	11/03/2014	0.0	0.0	1.4	19.6
Ham Farm	HAMFGMBH14	[No Source]	11/03/2014	0.0	0.0	1.1	19.0
Ham Farm	HAMFGMBH15	[No Source]	11/03/2014	0.0	0.0	0.8	19.9
Ham Farm	HAMFGMBH16	[No Source]	11/03/2014	0.0	0.0	1.2	19.6

EA Ham Farm Perimeter Gas monitoring Data - April to June 2014

Site	Sample Point	Data Source	Date	LEL (%)	CH4 (%)	CO2 (%)	O2 (%)
Ham Farm	HAMFGMBH01	[No Source]	08/04/2014	0.0	0.0	3.3	18.0
Ham Farm	HAMFGMBH02	[No Source]	08/04/2014	0.0	0.0	1.7	18.9
Ham Farm	HAMFGMBH03	[No Source]	08/04/2014	0.0	0.0	1.9	18.9
Ham Farm	HAMFGMBH04	[No Source]	08/04/2014	0.0	0.0	1.2	20.1
Ham Farm	HAMFGMBH05	[No Source]	08/04/2014	0.0	0.0	2.1	19.1
Ham Farm	HAMFGMBH06	[No Source]	08/04/2014	0.0	0.0	0.2	20.7
Ham Farm	HAMFGMBH07	[No Source]	08/04/2014	0.0	0.0	0.4	20.5
Ham Farm	HAMFGMBH08	[No Source]	08/04/2014	0.0	0.0	0.4	20.6
Ham Farm	HAMFGMBH09	[No Source]	08/04/2014	0.0	0.0	5.1	14.5
Ham Farm	HAMFGMBH10	[No Source]	08/04/2014	0.0	0.0	1.9	17.9
Ham Farm	HAMFGMBH11	[No Source]	08/04/2014	0.0	0.0	1.2	18.3
Ham Farm	HAMFGMBH12	[No Source]	08/04/2014	0.0	0.0	0.2	20.6
Ham Farm	HAMFGMBH13	[No Source]	08/04/2014	0.0	0.0	1.5	19.2
Ham Farm	HAMFGMBH14	[No Source]	08/04/2014	0.0	0.0	1.2	20.3
Ham Farm	HAMFGMBH15	[No Source]	08/04/2014	0.0	0.0	0.0	20.7
Ham Farm	HAMFGMBH16	[No Source]	08/04/2014	0.0	0.0	0.0	20.6
Ham Farm	HAMFGMBH01	[No Source]	12/05/2014	0.0	0.0	4.1	16.4
Ham Farm	HAMFGMBH02	[No Source]	12/05/2014	0.0	0.0	2.1	17.7
Ham Farm	HAMFGMBH03	[No Source]	12/05/2014	0.0	0.0	2.1	18.9
Ham Farm	HAMFGMBH04	[No Source]	12/05/2014	0.0	0.0	1.1	20.5
Ham Farm	HAMFGMBH05	[No Source]	12/05/2014	0.0	0.0	2.1	19.1
Ham Farm	HAMFGMBH06	[No Source]	12/05/2014	0.0	0.0	0.8	21.0
Ham Farm	HAMFGMBH07	[No Source]	12/05/2014	0.0	0.0	2.2	19.8
Ham Farm	HAMFGMBH08	[No Source]	12/05/2014	0.0	0.0	1.1	20.6
Ham Farm	HAMFGMBH09	[No Source]	12/05/2014	0.0	0.0	3.7	18.3
Ham Farm	HAMFGMBH10	[No Source]	12/05/2014	0.0	0.0	1.8	20.4
Ham Farm	HAMFGMBH11	[No Source]	12/05/2014	0.0	0.0	1.2	20.3
Ham Farm	HAMFGMBH12	[No Source]	12/05/2014	0.0	0.0	0.0	20.7
Ham Farm	HAMFGMBH13	[No Source]	12/05/2014	0.0	0.0	1.3	20.1
Ham Farm	HAMFGMBH14	[No Source]	12/05/2014	0.0	0.0	0.4	20.9
Ham Farm	HAMFGMBH15	[No Source]	12/05/2014	0.0	0.0	0.3	20.9
Ham Farm	HAMFGMBH16	[No Source]	12/05/2014	0.0	0.0	0.2	20.7
Ham Farm	HAMFGMBH01	[No Source]	10/06/2014	0.0	0.0	4.5	16.2
Ham Farm	HAMFGMBH02	[No Source]	10/06/2014	0.0	0.0	2.0	18.3
Ham Farm	HAMFGMBH03	[No Source]	10/06/2014	0.0	0.0	2.4	18.3
Ham Farm	HAMFGMBH04	[No Source]	10/06/2014	0.0	0.0	1.4	19.2
Ham Farm	HAMFGMBH05	[No Source]	10/06/2014	0.0	0.0	2.4	18.0
Ham Farm	HAMFGMBH06	[No Source]	10/06/2014	0.0	0.0	1.7	18.7
Ham Farm	HAMFGMBH07	[No Source]	10/06/2014	0.0	0.0	2.3	18.1
Ham Farm	HAMFGMBH08	[No Source]	10/06/2014	0.0	0.0	1.2	18.9
Ham Farm	HAMFGMBH09	[No Source]	10/06/2014	0.0	0.0	2.2	19.5
Ham Farm	HAMFGMBH10	[No Source]	10/06/2014	0.0	0.0	2.7	18.5
Ham Farm	HAMFGMBH11	[No Source]	10/06/2014	0.0	0.0	1.4	19.4
Ham Farm	HAMFGMBH12	[No Source]	10/06/2014	0.0	0.0	0.0	20.7
Ham Farm	HAMFGMBH13	[No Source]	10/06/2014	0.0	0.0	2.4	17.4
Ham Farm	HAMFGMBH14	[No Source]	10/06/2014	0.0	0.0	1.5	19.0
Ham Farm	HAMFGMBH15	[No Source]	10/06/2014	0.0	0.0	2.9	17.8
Ham Farm	HAMFGMBH16	[No Source]	10/06/2014	0.0	0.0	0.3	20.2

## Closed Landfill Site

### Kent County Council - Waste Management Unit

## Risk Assessment Pro-forma

### Section 1 –Site Information

SITE NAME:	<b>Ham Road, Faversham</b>
SITE REFERENCE:	<b>Z</b>
NATIONAL GRID REF:	601121 162285
OWNERS NAME AND ADDRESS:	Ace Sand and gravel company Ltd
	Bucklesbury House
	Bucklesbury, EC4.
	Faversham Borough Council/KCC (assumed)
OPERATORS NAME:	1972
START DATE:	Pre 1976
Sept 1974	
BRIEF DESCRIPTION/ OWNERSHIP HISTORY:	Leased by Ace Sand and gravel company Ltd to Mayor Aldermen
	And Burgesses of the borough of Faversham for tipping in 1972 KCC took over tipping duties in early 1974.
	Tipping commenced in late 1974.
	Res No 5/1
	KLA No SW11

Compiled by:	M.Rose	Date Feb 02
Checked by: K Pearce	Signed <i>K. Pearce</i>	Date 20/5/03

**Kent County Council, Waste Management Unit**  
**Closed Landfill Sites**

Risk Assessment Proforma



ELEMENT	REF DOCUMENTATION POINTS
<b>Section 2 – Source</b>	
<p><b>Section 2.1 – Site age</b></p> <p>How many years has the site been closed?</p> <p>Not known <input type="checkbox"/> (25 pts)</p> <p>0 - 5 years <input type="checkbox"/> (50 pts)</p> <p>6 - 10 years <input type="checkbox"/> (40 pts)</p> <p>11 - 20 years <input type="checkbox"/> (30 pts)</p> <p>21 - 30 years <input checked="" type="checkbox"/> (20 pts)</p> <p>31 - 36 years <input type="checkbox"/> (10 pts)</p> <p>&gt;36 years <input type="checkbox"/> (5 pts)</p> <p style="text-align: right;">Total</p>	<p>KCC records</p> <p style="text-align: right;">20</p>
<p><b>Section 2.2 – Site area</b></p> <p>What is the approximate area of the site?</p> <p>0 - 0.5 ha <input type="checkbox"/> (10 pts)</p> <p>0.5 - 1.0 ha <input type="checkbox"/> (20 pts)</p> <p>1.0 - 2.0 ha <input type="checkbox"/> (30 pts)</p> <p>2.0 - 3.0 ha <input type="checkbox"/> (40 pts)</p> <p>3.0 - 5.0 ha <input type="checkbox"/> (45 pts)</p> <p>&gt;5 ha <input checked="" type="checkbox"/> (50 pts) 8ha</p> <p style="text-align: right;">Total</p>	<p>OS map</p> <p style="text-align: right;">50</p>
<p><b>Section 2.3 – Types of waste</b></p> <p>What types of waste were deposited at the site?</p> <p>Domestic <input checked="" type="checkbox"/> (30 pts)</p> <p>Commercial <input type="checkbox"/> (15 pts)</p> <p>Inert <input checked="" type="checkbox"/> (10 pts)</p> <p>Non-hazardous industrial <input type="checkbox"/> (20 pts)</p> <p>Asbestos <input type="checkbox"/> (20 pts)</p> <p>Not known <input checked="" type="checkbox"/> (30 pts)</p> <p>Maximum allocation = 50 pts</p> <p style="text-align: right;">Total</p>	<p>KCC records</p> <p style="text-align: right;">50</p>

**Kent County Council, Waste Management Unit**  
**Closed Landfill Sites**

Risk Assessment Proforma



ELEMENT	REF. DOCUMENTATION
	POINTS
<b>Section 2 – Source (cont'd.)</b>	
<p><b>Section 2.4 – Site condition</b></p> <p>What is the condition of the site surface?</p> <p>i. Vegetation cover</p> <p>Well vegetated cover <input type="checkbox"/> (0 pts)</p> <p>poorly vegetated cover <input checked="" type="checkbox"/> (20 pts)</p> <p>poor cover/ some waste showing <input type="checkbox"/> (30 pts)</p> <p>ii. Topography</p> <p>combed/ well drained surface <input type="checkbox"/> (0 pts)</p> <p>undulating/ some local settlement <input checked="" type="checkbox"/> (10 pts)</p> <p>relatively flat/ poorly drained <input type="checkbox"/> (20 pts)</p> <p>Sum scores from each section</p> <p style="text-align: right;">Total</p>	<p style="text-align: center;">site visit</p> <p style="text-align: center;">30</p>
<p><b>Section 2.5 – Stability</b></p> <p>Are there steep slopes supporting waste on site? (i.e. &gt; 1 in 2.5)</p> <p>Yes <input type="checkbox"/> (20 pts)                      No <input checked="" type="checkbox"/> (0 pts)</p> <p>Is there any visible evidence of instability</p> <p>Yes <input type="checkbox"/> (complete the rest of section)                      No <input checked="" type="checkbox"/> (0 pts)</p> <p>Is there the presence of any of the following</p> <p>– tension cracks/holes <input type="checkbox"/> (10 pts)</p> <p>– minor slumping <input type="checkbox"/> (20 pts)</p> <p>– erosion by moving water <input type="checkbox"/> (30 pts)</p> <p>– significant movement <input type="checkbox"/> (40 pts)</p> <p>(Maximum score only)</p> <p style="text-align: right;">Total</p>	<p style="text-align: center;">Site Visit</p> <p style="text-align: center;">0</p>



ELEMENT	REF. DOCUMENTATION
POINTS	
<b>Section 3 – Pathways</b>	
<b>Section 3.1 – Geology</b>	
Soil Class from EA Groundwater vulnerability map.	EA Groundwater vulnerability map
High (H) 1, 2, 3, U <input checked="" type="checkbox"/> (50 pts)	
Intermediate (I) 1, 2 <input type="checkbox"/> (30 pts)	
Low <input type="checkbox"/> (10 pts)	
None <input type="checkbox"/> (0 pts)	
Total	50
<b>Section 3.2 – Aquifer classification</b>	
Soil Class from EA Groundwater vulnerability map.	EA Groundwater vulnerability map
– Major Aquifer <input type="checkbox"/> (50 pts)	
– Minor Aquifer <input checked="" type="checkbox"/> (20 pts)	
– Non Aquifer <input type="checkbox"/> (0 pts)	
Total	20
<b>Section 3.3 – Site boundary</b>	
Is there public access to the site?	Site visit
Authorised public access <input type="checkbox"/> (10 pts)	
Unauthorised public access possible <input checked="" type="checkbox"/> (5 pts)	
Well maintained boundary fence <input type="checkbox"/> (0 pts)	
Total	5
<b>Section 3.4 – Exposed Waste</b>	
Is there exposed waste at the surface of the site?	Site visit
Yes <input type="checkbox"/> (20 pts) No <input checked="" type="checkbox"/> (0 pts)	
Total	0
<b>Section 3.5 – Leachate Staining</b>	
Is there visual evidence of leachate staining?	Site visit
Yes <input checked="" type="checkbox"/> (50 pts) No <input type="checkbox"/> (0 pts)	
Total	50
<b>Section 3.6 – Vegetation “die back”</b>	
Is there visual evidence of “vegetation die back”?	Site visit
Yes <input type="checkbox"/> (20 pts) No <input checked="" type="checkbox"/> (0 pts)	
Total	0







ELEMENT	REF. DOCUMENTATION POINTS
<b>Section 4 – Receptors</b>	
<p><b>Section 4.1 – Aquifer use</b></p> <p>If a minor or major aquifer is present (see Section 3.2) what is the highest source protection zone the site is within?</p> <p>Inner protection zone (II) <input type="checkbox"/> (50 pts)            Outer protection zone (III) <input type="checkbox"/> (30 pts)            Total Catchment (III) <input type="checkbox"/> (5 pts)            Zone of Special Interest <input type="checkbox"/> (20 pts)            No designation <input checked="" type="checkbox"/> (0 pts)</p> <p style="text-align: right;">Total</p>	<p>EA records</p> <p style="text-align: center;">0</p>
<p><b>Section 4.2 – Surface water classification, - chemical river quality</b></p> <p>Surface water classification – based on EA chemical river quality maps – Likely to receive water drained from the site</p> <p>Name of river _____ Oare Creek/Faversham Creek _____</p> <p>- very good <input type="checkbox"/> (40 pts)      - fair <input checked="" type="checkbox"/> (15 pts)            - good <input type="checkbox"/> (30 pts)      - poor <input type="checkbox"/> (10 pts)            - fairly good <input type="checkbox"/> (20 pts)      - bad <input type="checkbox"/> (5 pts)</p> <p style="text-align: right;">Total</p>	<p><a href="http://www.environment-agency.gov.uk/yourenv/eff/water/213902/river-qual">http://www.environment-agency.gov.uk/yourenv/eff/water/213902/river-qual</a></p> <p style="text-align: center;">15</p>
<p><b>Section 4.3 – Surface water classification, - biological river quality</b></p> <p>Surface water classification – based on EA biological river quality maps – Likely to receive water drained from the site</p> <p>Name of river _____ Oare Creek/Faversham Creek _____</p> <p>- very good <input type="checkbox"/> (40 pts)      - fair <input type="checkbox"/> (15 pts)            - good <input checked="" type="checkbox"/> (30 pts)      - poor <input type="checkbox"/> (10 pts)            - fairly good <input type="checkbox"/> (20 pts)      - bad <input type="checkbox"/> (5 pts)</p> <p style="text-align: right;">Total</p>	<p><a href="http://www.environment-agency.gov.uk/yourenv/eff/water/213902/river-qual">http://www.environment-agency.gov.uk/yourenv/eff/water/213902/river-qual</a></p> <p style="text-align: center;">30</p>
<p><b>Section 4.4 – Other localised Surface Waters</b></p> <p>Are there any other localised surface waters (e.g. ponds, ditches, springs) that may potentially be affected?</p> <p>Yes <input checked="" type="checkbox"/> (20 pts)      No <input type="checkbox"/> (0 pts)</p> <p style="text-align: right;">Total</p>	<p>OS map</p> <p style="text-align: center;">20</p>



**Kent County Council, Waste Management Unit**  
**Closed Landfill Sites**

Risk Assessment Proforma



ELEMENT		REF. DOCUMENTATION																																																					
		POINTS																																																					
Section 4 – Receptors (cont'd.)																																																							
<b>Section 4.9 – Development</b>  Is there any development within 1000m of the site boundary? Yes <input checked="" type="checkbox"/> (complete the rest of section)      No <input type="checkbox"/> (0 pts)		OS Map and Site Visit																																																					
<table border="1"> <thead> <tr> <th rowspan="2">Distance (m) from site boundary</th> <th colspan="5">Building</th> <th rowspan="2">Total</th> </tr> <tr> <th>Public</th> <th>Domestic</th> <th>Commercial</th> <th>Industrial</th> <th>Agricultural</th> </tr> </thead> <tbody> <tr> <td>500 – 1000</td> <td>1</td> <td>1</td> <td>0</td> <td>0</td> <td>0</td> <td>2</td> </tr> <tr> <td>200 – 500</td> <td>5</td> <td>3</td> <td>0</td> <td>0</td> <td>0</td> <td>8</td> </tr> <tr> <td>100 – 200</td> <td>10</td> <td>8</td> <td>5</td> <td>0</td> <td>0</td> <td>23</td> </tr> <tr> <td>50 – 100</td> <td>20</td> <td>15</td> <td>8</td> <td>3</td> <td>3</td> <td>41</td> </tr> <tr> <td>&lt;50</td> <td>30</td> <td>30</td> <td>10</td> <td>5</td> <td>5</td> <td>35</td> </tr> <tr> <td colspan="6" style="text-align: right;">Total</td> <td>109</td> </tr> </tbody> </table>			Distance (m) from site boundary	Building					Total	Public	Domestic	Commercial	Industrial	Agricultural	500 – 1000	1	1	0	0	0	2	200 – 500	5	3	0	0	0	8	100 – 200	10	8	5	0	0	23	50 – 100	20	15	8	3	3	41	<50	30	30	10	5	5	35	Total					
Distance (m) from site boundary	Building					Total																																																	
	Public	Domestic	Commercial	Industrial	Agricultural																																																		
500 – 1000	1	1	0	0	0	2																																																	
200 – 500	5	3	0	0	0	8																																																	
100 – 200	10	8	5	0	0	23																																																	
50 – 100	20	15	8	3	3	41																																																	
<50	30	30	10	5	5	35																																																	
Total						109																																																	
<b>Section 4.10 – Vulnerable services</b>  Are there any vulnerable services within the site boundary or within 100m of the site boundary?  Yes <input checked="" type="checkbox"/> (complete the rest of section)      No <input type="checkbox"/> (0 pts)		Site Visit																																																					
<ul style="list-style-type: none"> <li>- water <input checked="" type="checkbox"/> (50 pts)</li> <li>- gas pipe lines <input checked="" type="checkbox"/> (30 pts)</li> <li>- electricity substation <input type="checkbox"/> (5 pts)</li> <li>- oil pipe line <input type="checkbox"/> (20 pts)</li> <li>- sewage <input checked="" type="checkbox"/> (5 pts)</li> </ul> <p>_____ (please specify and award points accordingly) _____</p> <p style="text-align: right;">Total <span style="float: right;">85</span></p>																																																							
<b>Section 4.11 – Site use</b>  Is the site intended or used for:		Site Visit																																																					
Yes <input checked="" type="checkbox"/> (complete the rest of section)      No <input type="checkbox"/> (0 pts)																																																							
<ul style="list-style-type: none"> <li>- domestic gardens <input type="checkbox"/> (30 pts)</li> <li>- allotments/ agricultural arable <input type="checkbox"/> (25 pts)</li> <li>- park, playing fields, public open spaces, landscape areas <input type="checkbox"/> (5 pts)</li> <li>- buildings without gardens or substantial landscape areas <input type="checkbox"/> (5 pts)</li> <li>- agricultural grazing <input checked="" type="checkbox"/> (5 pts)</li> <li>- neglected land/ <input type="checkbox"/> (0 pts)</li> </ul> <p>Maximum: from above only</p> <p style="text-align: right;">Total <span style="float: right;">5</span></p>																																																							

**Kent County Council, Waste Management Unit**  
**Closed Landfill Sites**

Risk Assessment Proforma



ELEMENT	REF. DOCUMENTATION
	POINTS
<b>Section 4 – Receptors (cont'd)</b>	
<b>Section 4.12 – Signs</b>  Is the site adequately signed?  Yes <input checked="" type="checkbox"/> (10 pts)                      No <input type="checkbox"/> (10 pts)	No notice required
Total	
<b>Section 4.13 – Public footpaths or rights of way</b>  Are there any public footpaths or rights of way across the site?  Yes <input type="checkbox"/> (10 pts)                      No <input checked="" type="checkbox"/> (10 pts)	
Total	

**Kent County Council, Waste Management Unit**  
**Closed Landfill Sites**

Risk Assessment Proforma



ELEMENT	REF. DOCUMENTATION	POINTS
<b>Section 5 – Monitoring of Impact</b>		
<b>Section 5.1 – Environmental Problems</b>		
Has there been a known or suspected environmental problems in the past 10 years?		
Yes <input checked="" type="checkbox"/> (complete the rest of section)      No <input type="checkbox"/> (0 pts)		
Environment Agency prosecution <input type="checkbox"/> (50 pts)		
Environment Agency investigation <input type="checkbox"/> (40 pts)		
Council investigation <input type="checkbox"/> (30 pts)		
Written complaint <input type="checkbox"/> (20 pts)		
Known or suspected problem <input checked="" type="checkbox"/> (please specify and award points accordingly) 20 _____		
Suspected leachate seepage, sample taken. Low polluting risk _____		
Top two scores only		Total 20
<b>Section 5.2 – Monitoring equipment</b>		
Is there adequate monitoring equipment/scheme in place for leachate?		
Yes <input type="checkbox"/> (0 pts)      No <input checked="" type="checkbox"/> (20 pts)		
Known or suspected problem <input type="checkbox"/> (20 pts, please specify)		
_____		
_____		
Is there adequate monitoring equipment/scheme in place for landfill gas?		
Yes <input type="checkbox"/> (0 pts)      No <input checked="" type="checkbox"/> (20 pts)		
What is the highest methane or carbon dioxide % recorded from a boundary borehole/vent?		
<1% <input type="checkbox"/> (0 pts)      21 – 30% <input type="checkbox"/> (15 pts)		
1 – 10% <input type="checkbox"/> (5 pts)      31 – 40% <input type="checkbox"/> (20 pts)		
11 – 20% <input type="checkbox"/> (10 pts)      >41% <input type="checkbox"/> (25 pts)		
Total		40



## **Additional Information**



## Scoring

Section 1 – Site Information		
------------------------------	--	--

Section 2 – Source	Score	Section Total
Section 2.1	20	
Section 2.2	50	
Section 2.3	50	
Section 2.4	30	
Section 2.5	0	
		150

Section 3 – Pathways	Score	Section Total
Section 3.1	50	
Section 3.2	20	
Section 3.3	5	
Section 3.4	0	
Section 3.5	50	
Section 3.6	0	
Section 3.7	30	
Section 3.8	50	
Section 3.9	50	
Section 3.10	0	
		255

Section 4 – Receptors	Score	Section Total
Section 4.1	0	
Section 4.2	15	
Section 4.3	30	
Section 4.4	20	
Section 4.5	5	
Section 4.6	0	
Section 4.7	0	
Section 4.8	0	
Section 4.9	109	
Section 4.10	85	
Section 4.11	5	
Section 4.12	0	
Section 4.13	0	
		269

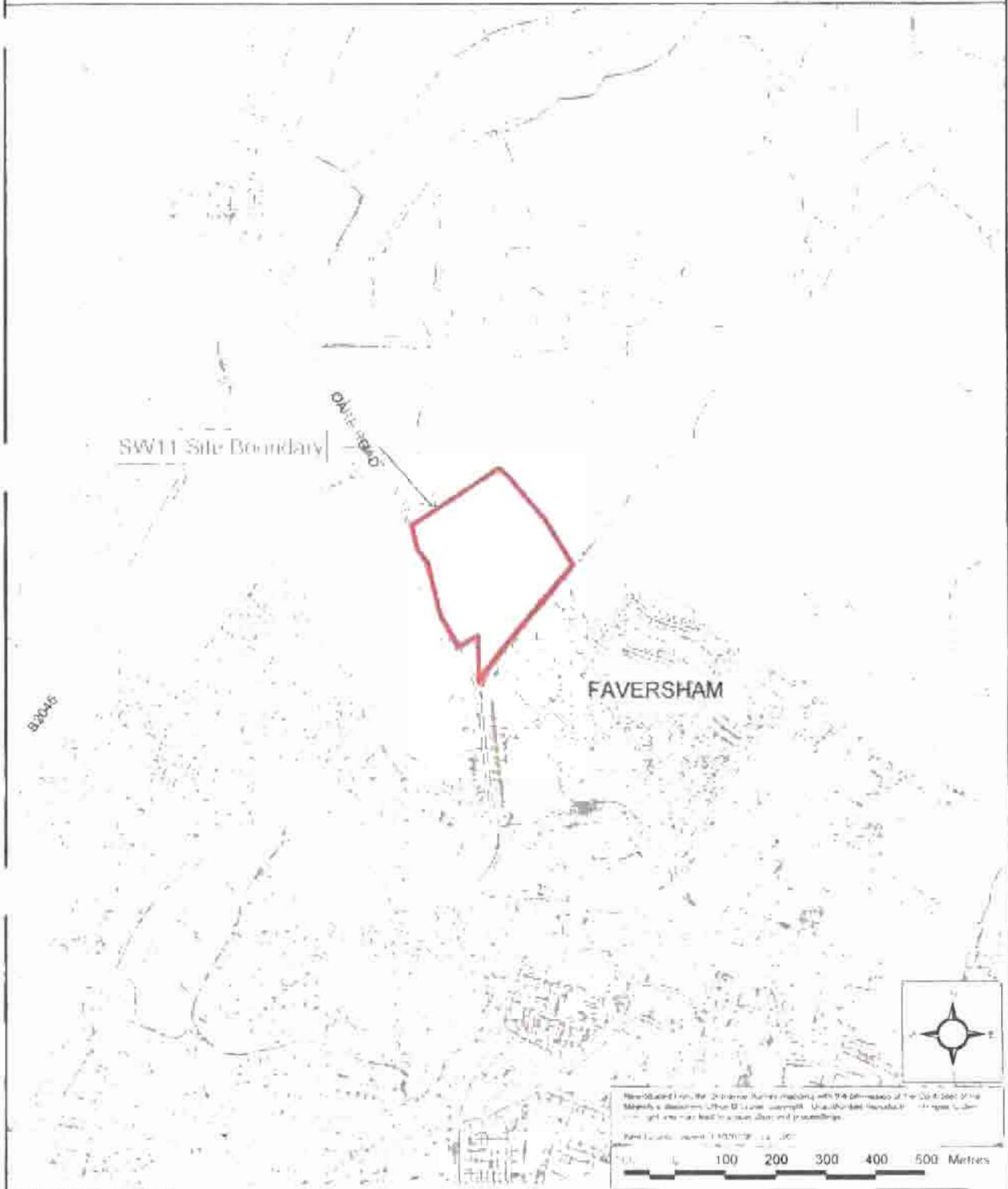
Section 5 – Source	Score	Section Total
Section 5.1	20	80
Section 5.2	40	





## Site Summary


SITE NAME	Ham Road, Faversham
SITE REFERENCE:	Z
TOTAL SCORE FOR SITE	734
INITIAL SITE RANKING	8
Groundwater Index (Gwl) Score / Ranking	9000 / 19
Surface water Index (Swl) Score / Ranking	18750 / 8
Gas Index (G) Score / Ranking	34220 / 7
Human/Eco-system Index (H/Esl) Score / ranking	33395 / 10
OVERALL RISK RANKING	4



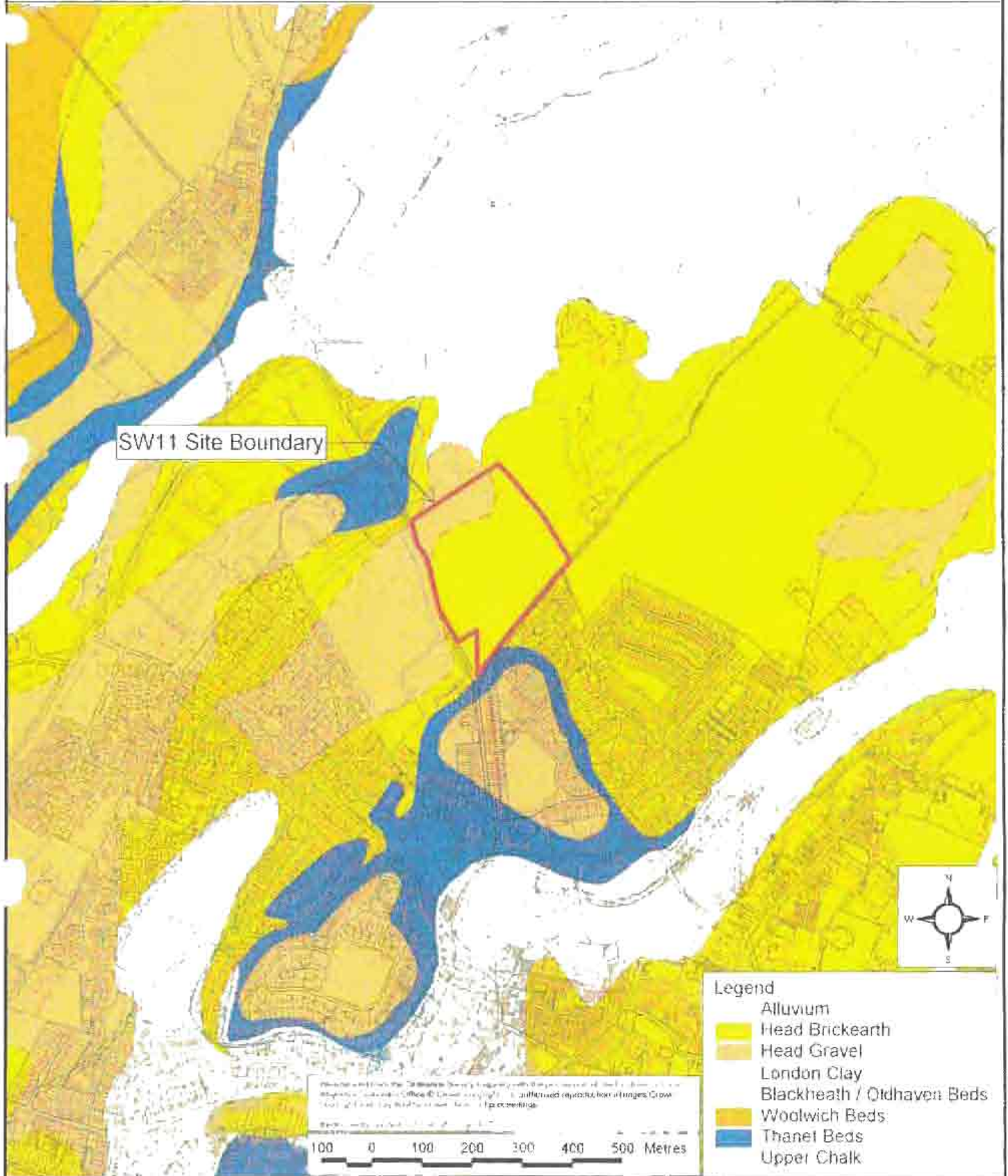
Reproduced from the Ordnance Survey mapping with the permission of the Controller of the Map and Aerial Photographs. Unauthorised reproduction of this map may lead to action under the Copyright, Designs and Patents Act 1988.

Kent County Council 1/20/2019 14:30

© Babbie Group

	<b>Site Location Plan</b>	Print No.	30/01
		File No.	1
		Date	Nov 21

Client **Kent County Council Waste Management Unit**  
 Job **Ham Road Closed Landfill Site, Faversham (SW11)**



Extract From Geological Map

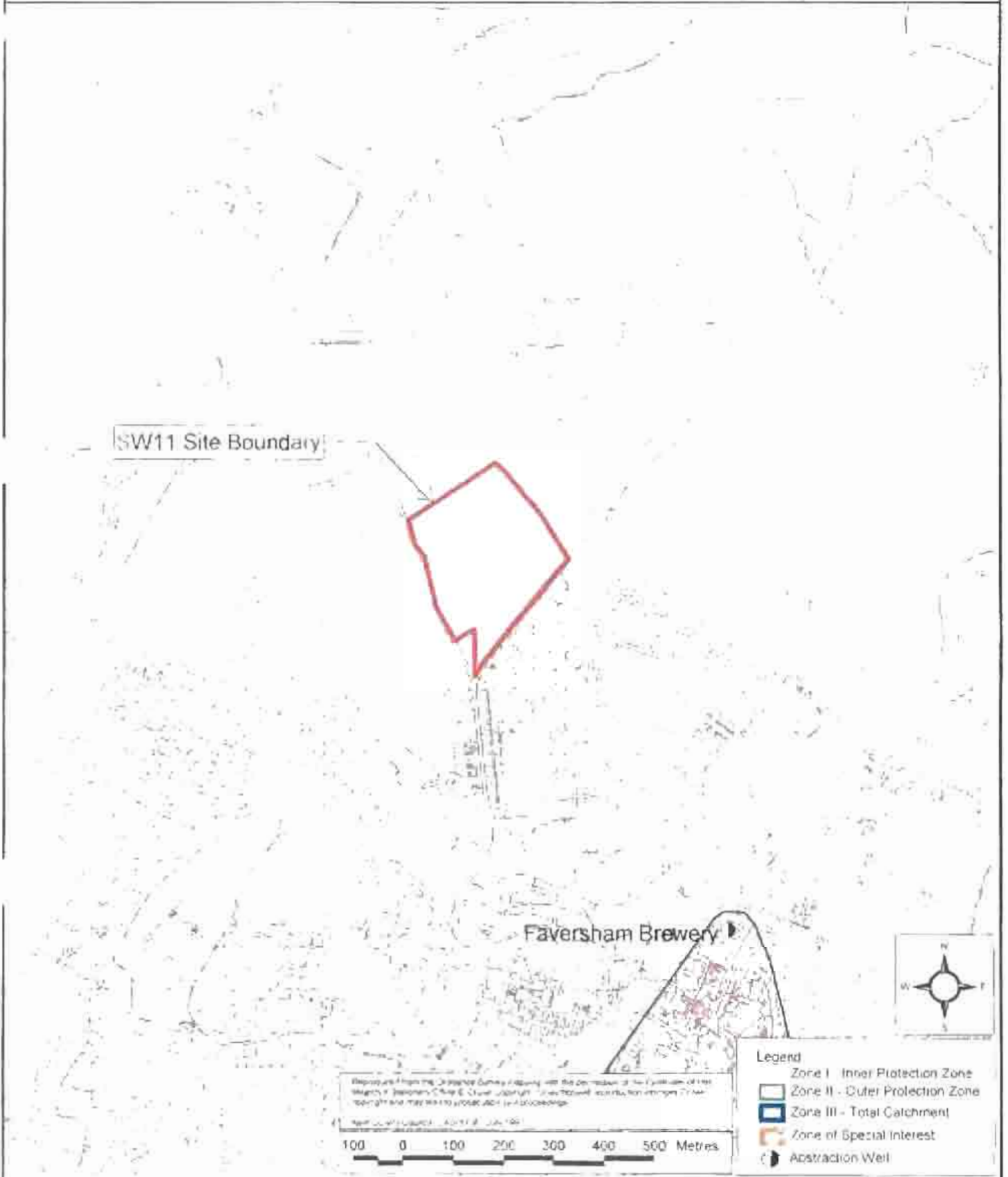
Proj. No.	30/01
Rev.	2
Date	Nov 01

Client

Kent County Council - Waste Management Unit

Job

Ham Road Closed Landfill Site, Faversham (SW11)



SW11 Site Boundary

Faversham Brewery

Reproduced from the Ordnance Survey mapping with the permission of the Controller of Her Majesty's Stationery Office & Crown Copyright. The copyright in this map remains the property of the Ordnance Survey and may be used in accordance with the Ordnance Survey Licence.

Scale: 1:50,000 (OS 1:50,000)

100 0 100 200 300 400 500 Metres

Legend

- Zone I - Inner Protection Zone
- Zone II - Outer Protection Zone
- Zone III - Total Catchment
- Zone of Special Interest
- Abstraction Well

© Babbie Group

	<p>Source Protection</p>	PROJ No:	30/01
		FIG No:	3
		DATE:	Nov 01