

LEGEND

- underfloor heating to manufacturers designs
- u/f manifold
- Radiator
- Towel Radiators

All to be designed and installed in accordance with 'Domestic Services Compliance Guide 2013'
Size of radiators to be confirmed by appointed plumber / mechanical specialist.

LEGEND

- Heat Detector
- Smoke Detector (Mains inter-linked)
- Carbon Monoxide Detector
- Wall mounted extract & ducting
- Boiler
- Floor mounted gas meter
- Consumer Unit
- Electric smart meter
- Rising water main
- Gas Point
- Stop cock
- Multi gang grid switch with fused spurs
- 13 amp. switched double socket
- 13 amp. switched single socket
- 13 amp. switched single socket (low level)
- 13 amp. switched single socket (high level)
- External socket
- 32 amp. cooker & induction hob sockets
- Switched Fused Spur
- Television Point
- Telephone Point
- Cat 5 ethernet port
- Light switch
- 2 way Light switch
- 3 way Light switch
- light switch with neon indicator (linen cpds)
- Pendant light-fitting
- Recessed low energy down-lighter (LED)
- Recessed low energy down-lighter (IP rated)
- LED lamp fitting
- Shaver point (with light-fitting)
- External wall light with solar sensor / infra red detectors & over-ride switch
- Time/Temperature Zone Central Heating controller
- Illuminated Door bell (transformer operated)
- Door bell chime
- LED Strips

All Electrical work required to meet the requirements of Part P (Electrical Safety) must be designed, installed, inspected and tested by a registered person competent under Part P

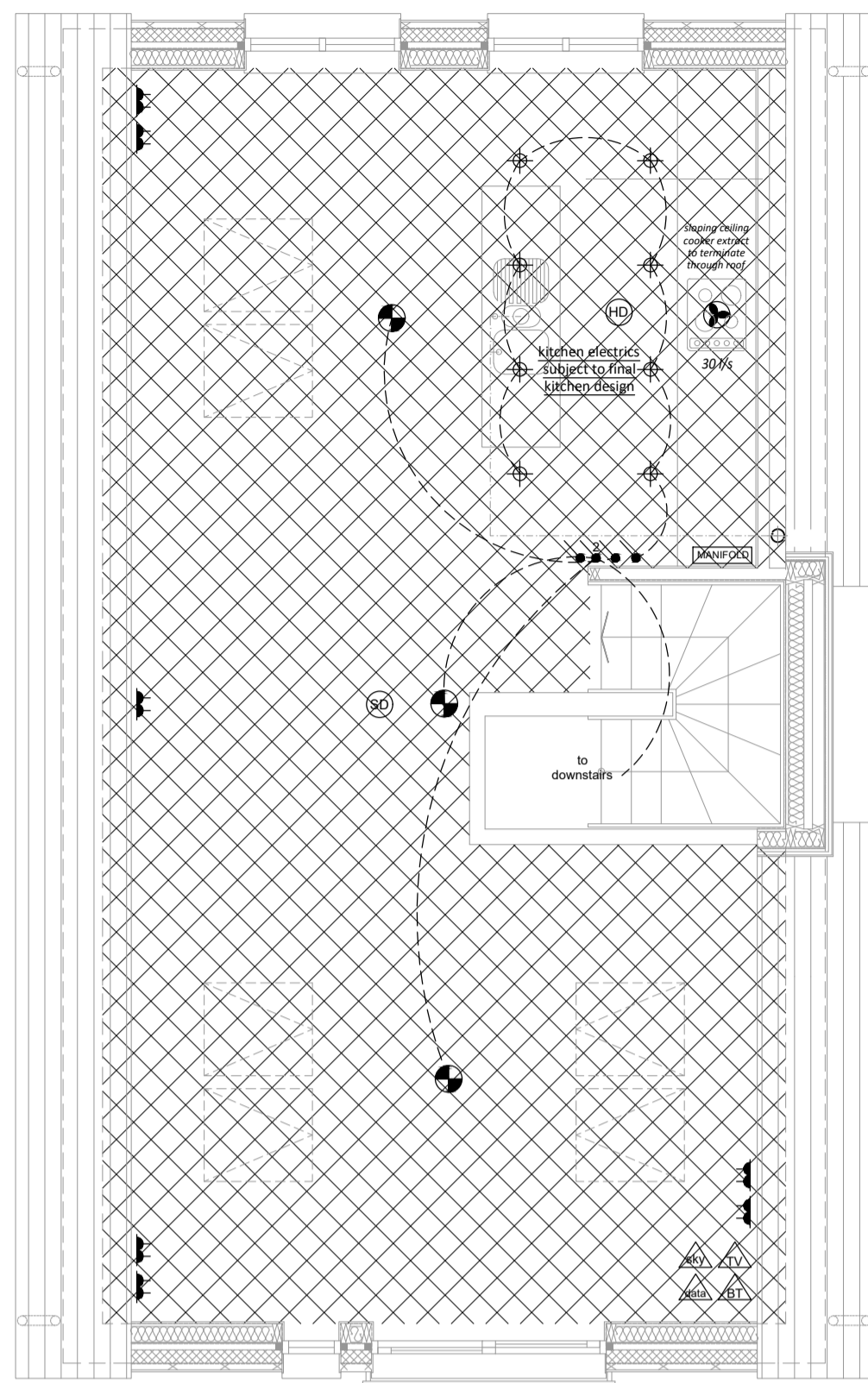
Socket Outlets & Light Switches - All socket outlets and light switches are to be located between 450mm minimum and 1200mm maximum above finished floor level.

Ducting from extract fans and cooker hoods to run through floor and roof voids and to terminate at external walls / roofs at least 300mm away from any external window opening. Exact ducting routes to be confirmed by specialist.

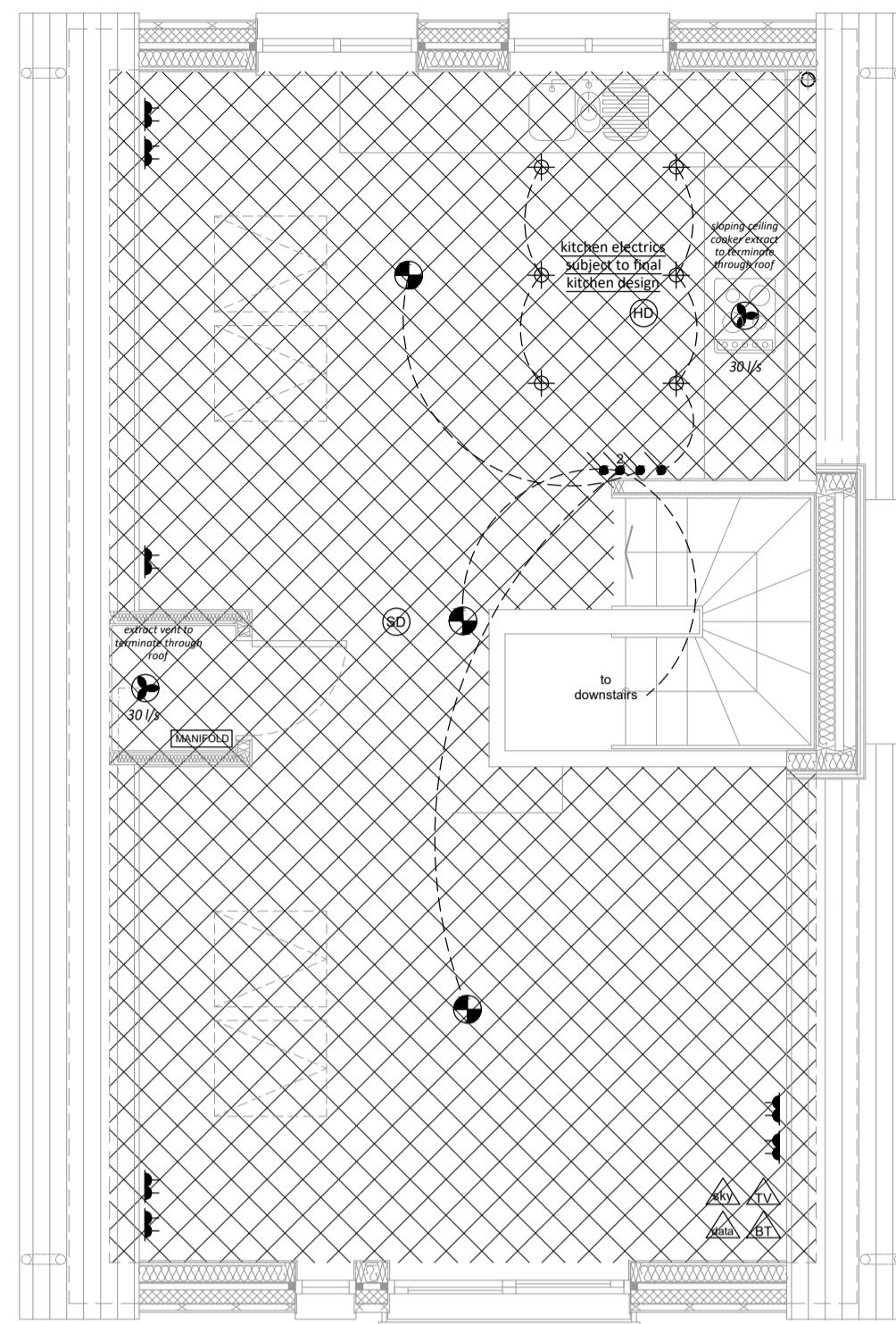
Services information for indicative purposes only.

Contractors mechanical and electrical contractors to agree performance specifications and final layouts with client prior to 1st fix on site.

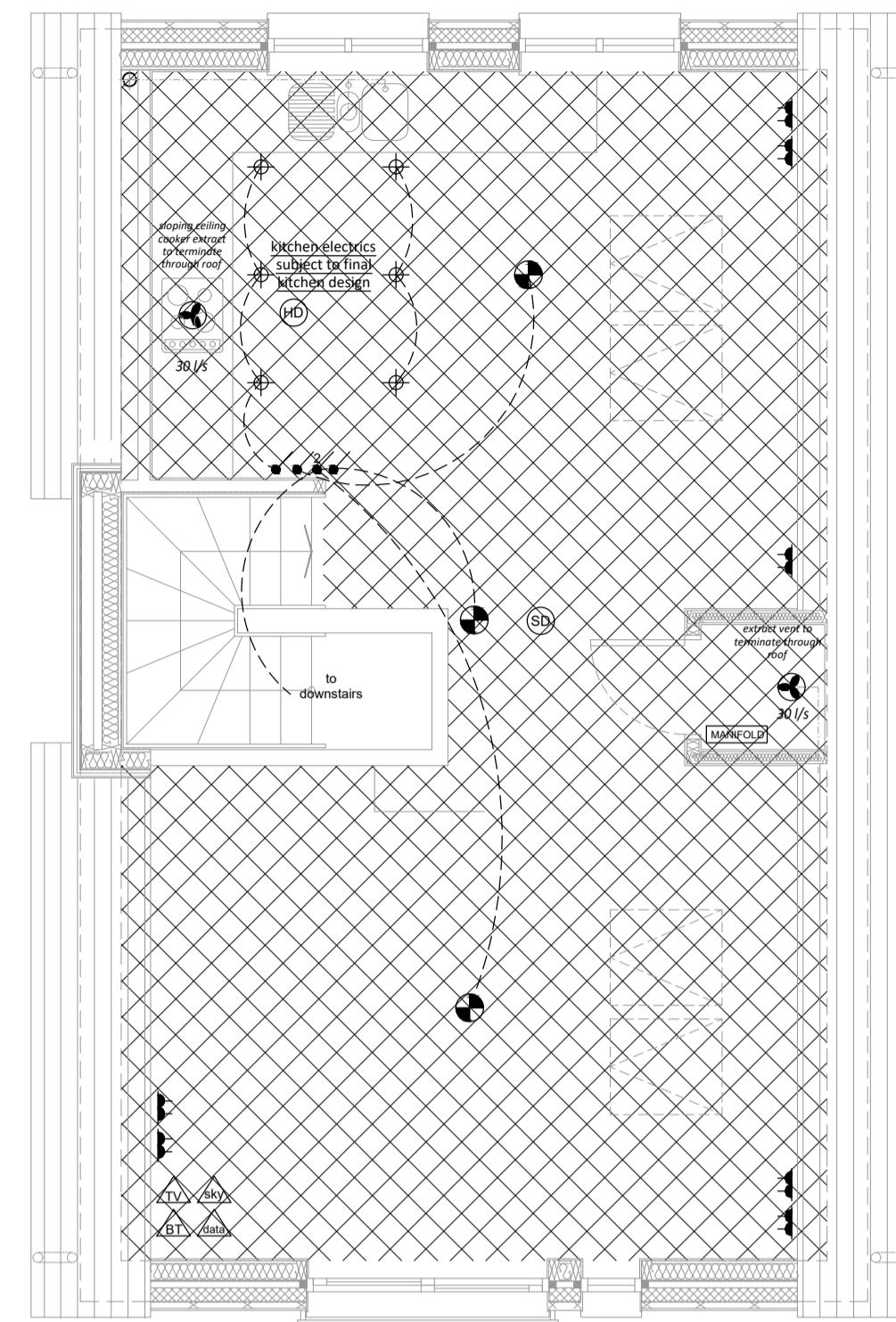
Approved Document R - Physical Infrastructure for High Speed Electronic Communications Networks
The electrical contractor is to ensure that the building is equipped with high speed ready in building physical infrastructure up to a network termination point for high speed electronic communications network.



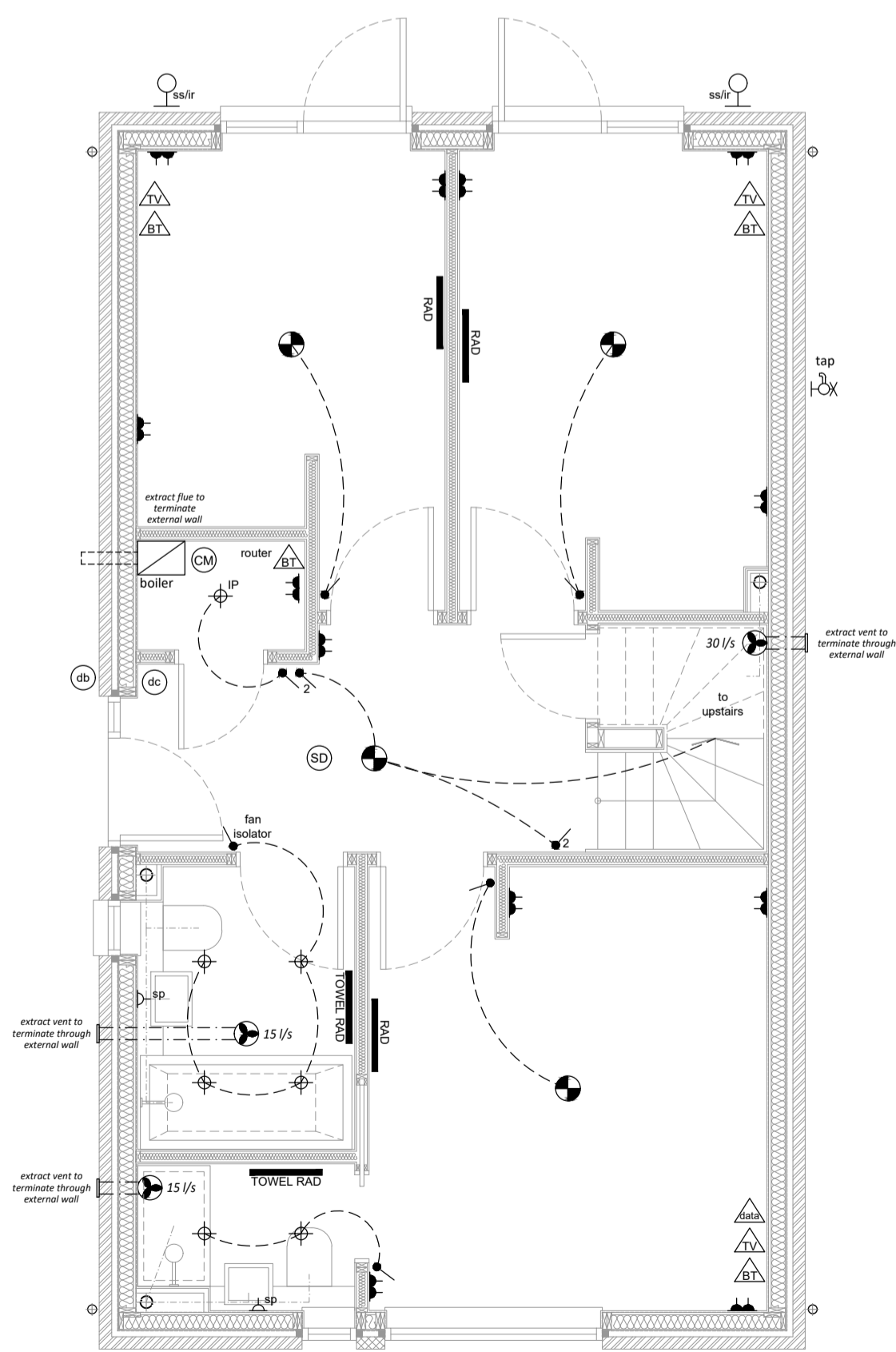
Unit 1 - First Floor Plan
1:50



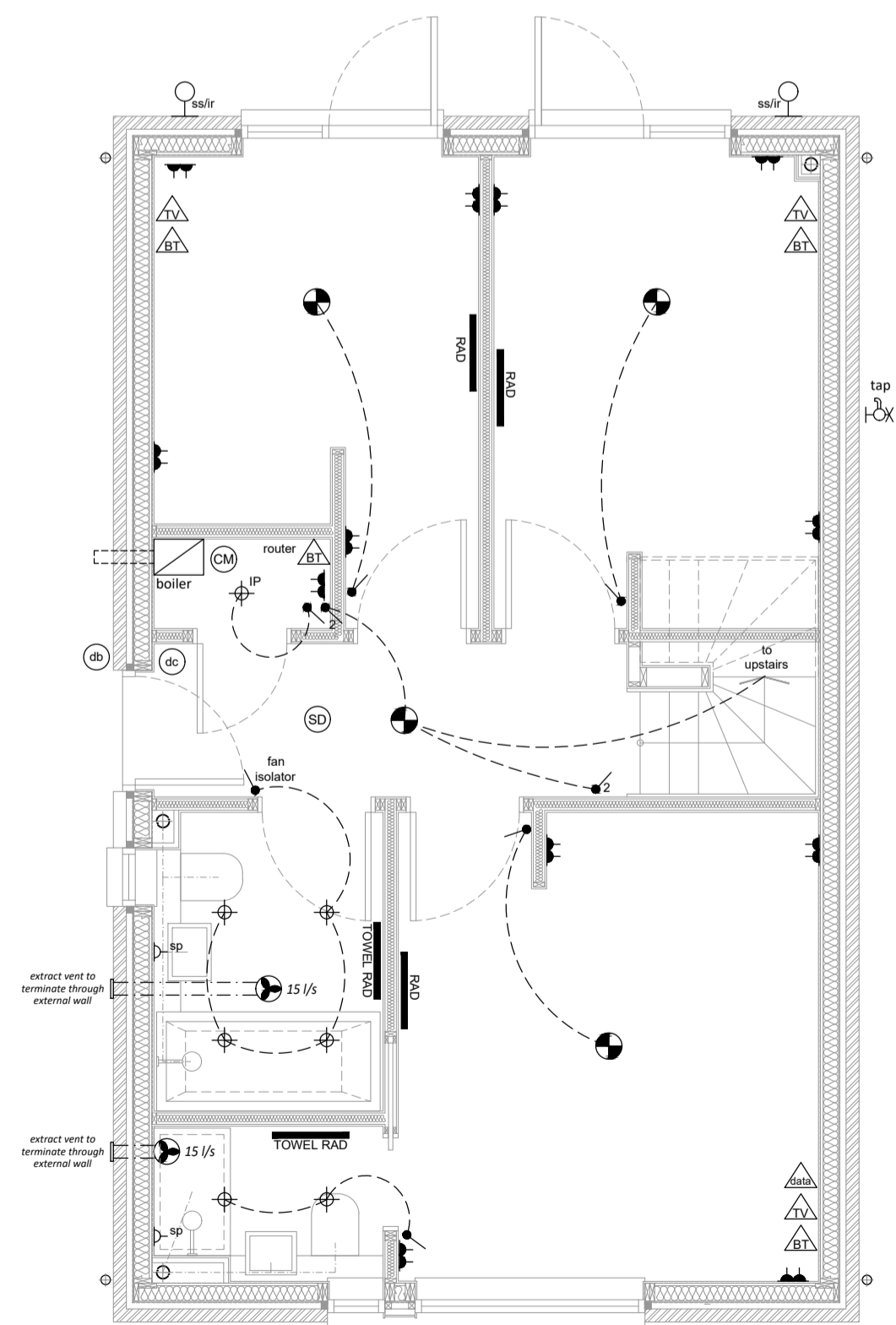
Unit 2 - First Floor Plan
1:50



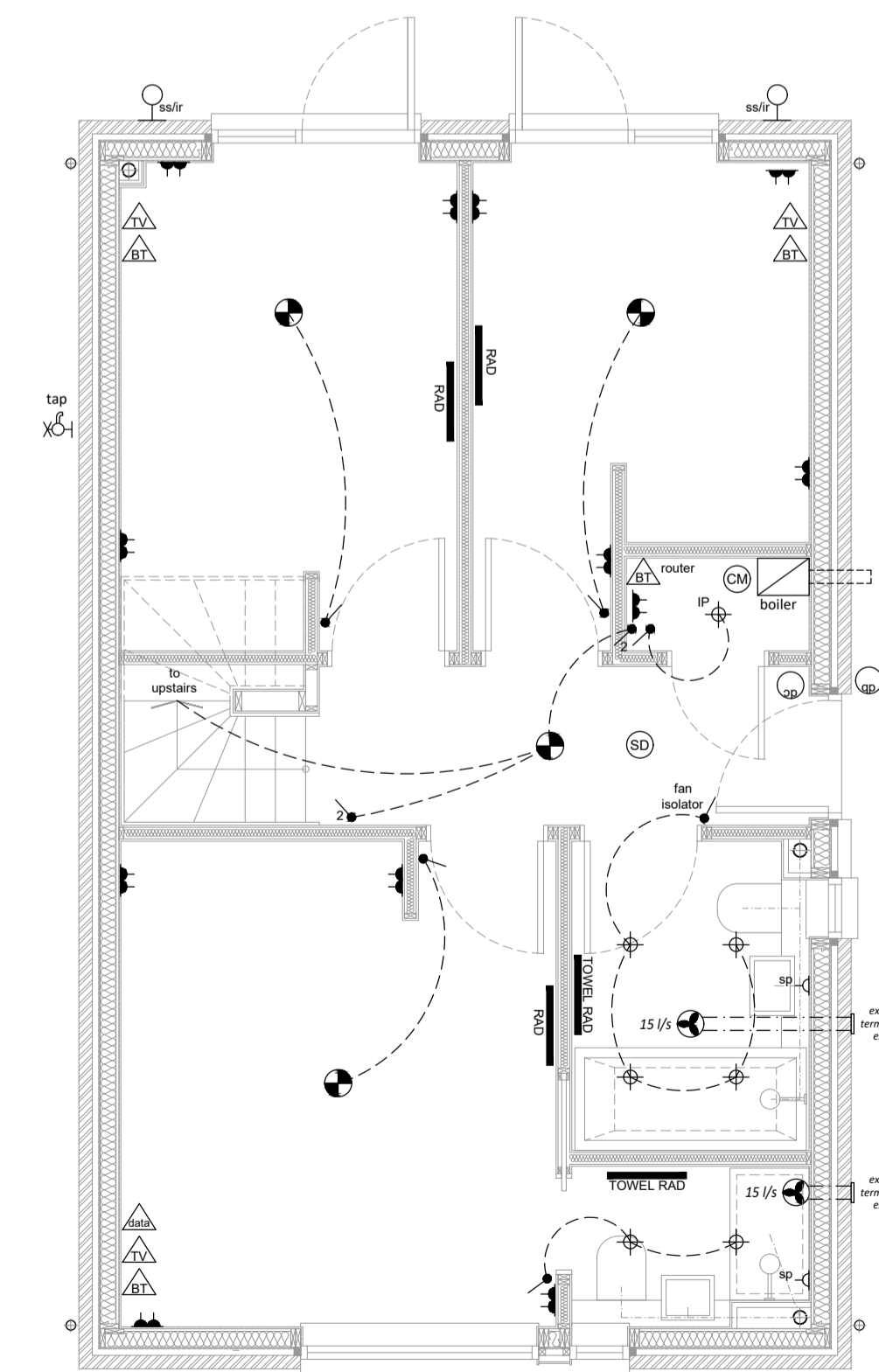
Unit 3 - First Floor Plan
1:50



Unit 1 - Ground Floor Plan
1:50



Unit 2 - Ground Floor Plan
1:50



Unit 3 - Ground Floor Plan
1:50

B	updated to suit S/E info and building regs amendments	08.11.19
A	building regs submission	22.08.19
Residential Development for 3No. Detached Dwellings		B
Unit 1, 2 and 3 M and E Layouts		1:50 @ A1
66 Borstal Hill Whitstable		167.67



info@dcm-architecture.co.uk | 07824 363295

do not visit the contractor is responsible for checking dimensions, quantities and references. all discrepancies to be reported to DCM Architectural Consultants before proceeding with the work. all drawings to be read in conjunction with other documents drawings. all drawings to be read in conjunction with Construction Notes.