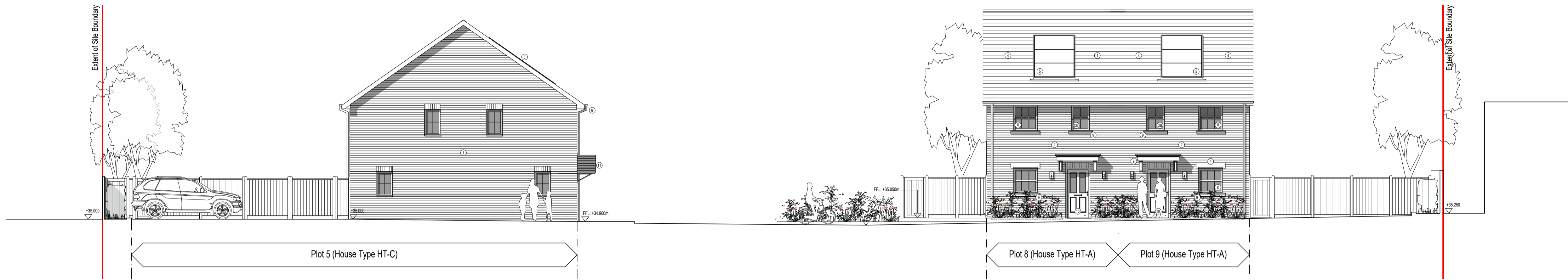
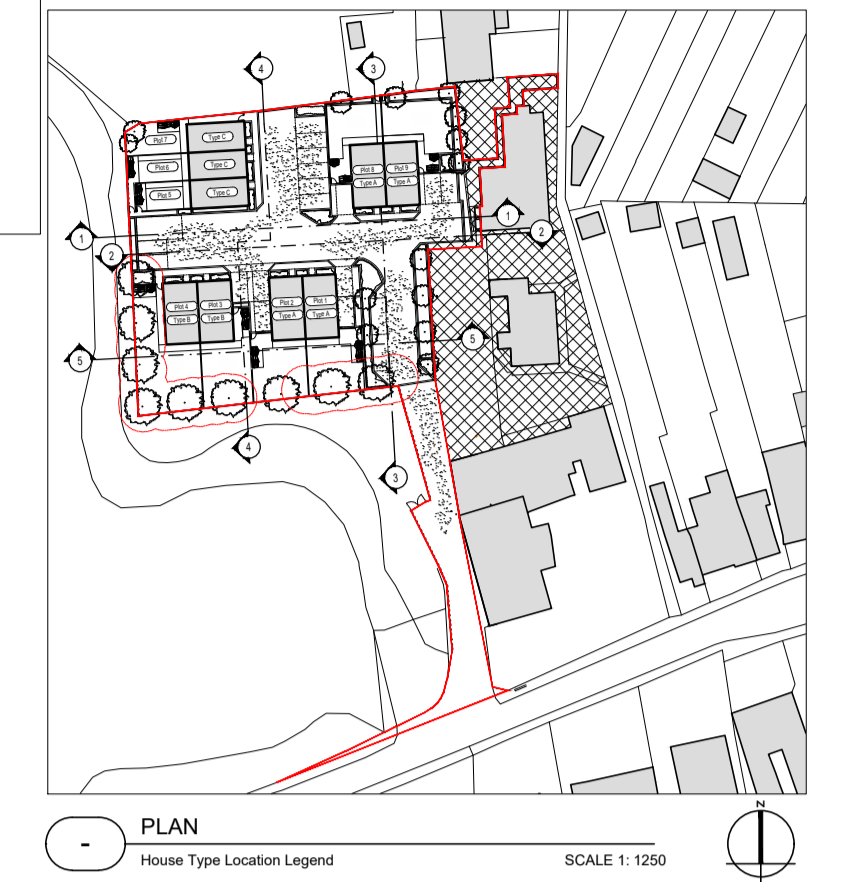


1. Brickwork (Plots 1 - 4) Type: Facing brickwork Colour: Weathered Red Rubber Manufacturer: Imperial Bricks (or similar)	1. Brickwork (Plots 5 - 7) Type: Facing brickwork Colour: Red Boleworth Blend Manufacturer: Imperial Bricks (or similar)	2. Brickwork (Plots 8 - 9) Type: Facing brickwork Colour: London Stock Buff Brickwork Manufacturer: Imperial Bricks (or similar)	2. Brickwork (Boundary Wall) Type: Recycled brickwork / replacement stock Colour: Weathered London Stock Manufacturer: As existing or Imperial Bricks (or similar)	3. Roof Tiles Type: Plain Clay Tiles Colour: Humber Tuscan Manufacturer: Sandlot or Similar	4. Roof Tiles Type: Natural Fresh Slate Colour: Spanish Slate Manufacturer: Marley / Dreadnought or Similar	6. Eaves and Fascias Type: UPVC Colour: White, with Black UPVC Rainwater Goods Manufacturer: SG or similar	7. Windows / Doors Type: UPVC Colour: Pebble Grey (RAL 7032) Manufacturer: Eurocol / Rehau (or similar)	8. Windows / Doors Type: Painted Timber with Sliding Sashes and Bars Colour: Pure White (RAL 9010) Manufacturer: Bereco (or similar)	9. Stone Detailing Type: Reconstituted Stone Headers and Cills Colour: Portland Finish Manufacturer: Chikstone / Arcanthus Stone (or similar)	10. Entrance Door Type: Composite PAS 24 Door Colour: Black Manufacturer: London Door Co / Crystal Doors (or similar)	11. Canopy Type: GRP / Prefabricated Unit Colour: Black Manufacturer: Stormking (or similar)	12. Weatherboarding Type: Tongue and Groove Composite Cladding Colour: Ivory / Cream - Timber Effect Manufacturer: Cedar (or similar)
--	---	---	---	--	--	---	--	---	--	--	---	--

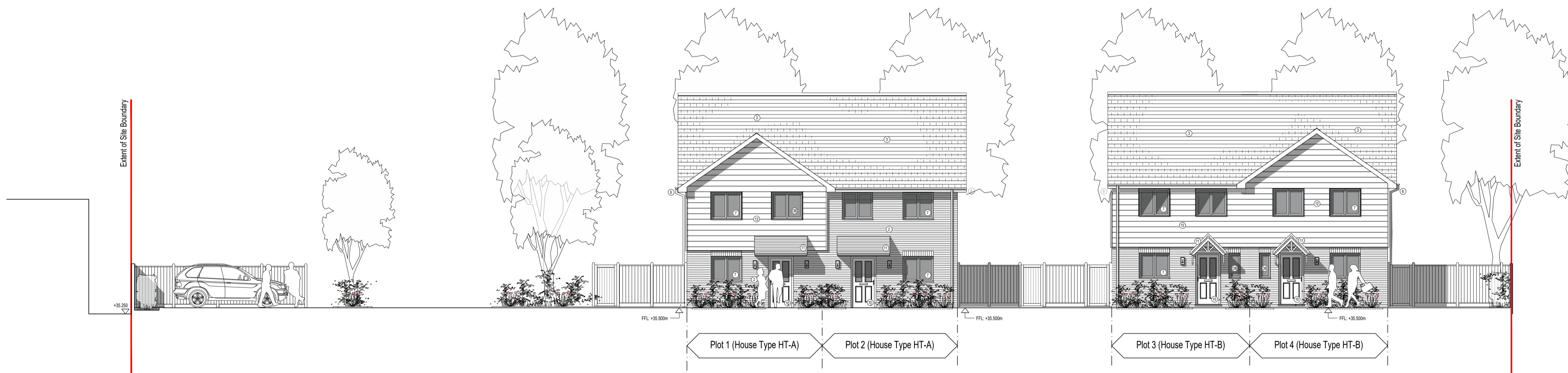
**DO NOT SCALE FROM THIS DRAWING.**  
Except for planning purposes. All dimensions must be verified by the main contractor before the commencement on site of any item of work or the preparation of shop drawings for their own work or that of sub-contractor or suppliers.  
This drawing is to be read in conjunction with all relevant documents. Any queries or discrepancies must be reported immediately to the architect.  
This document is copyright of Studio Hudson Ltd



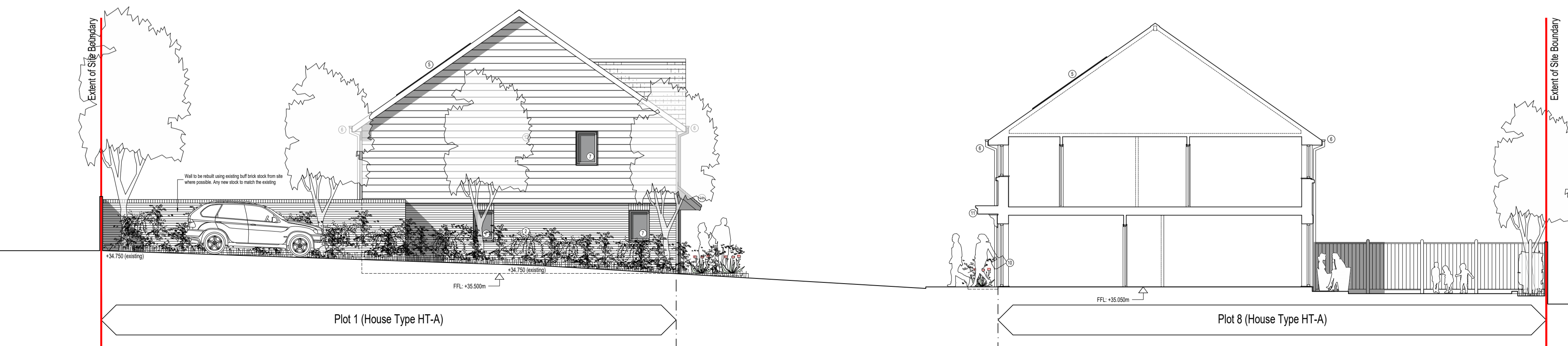
**1-1** ELEVATION  
Elevation 1-1  
SCALE 1: 100

**Materials Key**

- ① Red multi stock facing brickwork
- ② Buff multi stock facing brickwork
- ③ Clay roof tiles
- ④ Slate roof tiles
- ⑤ Photovoltaic Roof Panels
- ⑥ White UPVC eaves, fascia, soffit boards with Black UPVC rainwater goods
- ⑦ Pebble Grey UPVC windows / doors
- ⑧ White Painted Timber Sash Windows
- ⑨ Reconstituted Stone - Portland Finish
- ⑩ Matt Black composite front door
- ⑪ White GRP porch canopy
- ⑫ Ivory T&G composite timber effect cladding
- ⓪B Obscured glazing to windows



**2-2** ELEVATION  
Elevation 2-2  
SCALE 1: 100



**3-3** ELEVATION  
Elevation 3-3  
SCALE 1: 100

**For Planning Submission Purposes**  
D Issued for discussion June 2025

<p>SCALE 1:100</p>	<p>SCALE 1:1250</p>
<p><b>STUDIO HUDSON architects</b></p> <p>Studio Hudson Ltd. &gt; Wilman Road, Royal Tunbridge Wells, Kent. TN4 9AJ t: 01892 673 158 e: info@studio-hudson.co.uk www.studio-hudson.co.uk</p>	<p>Project: Landscape Services Depot Broad Lane Wilmington, Dartford. DA2 7AQ</p> <p>Drawing Title: <b>Proposed Elevations</b></p> <p>Drawing Number: <b>2401-P-800</b></p>
<p>Date: Nov 2024</p> <p>Scale: Noted @ A1</p> <p>Rev: D</p>	