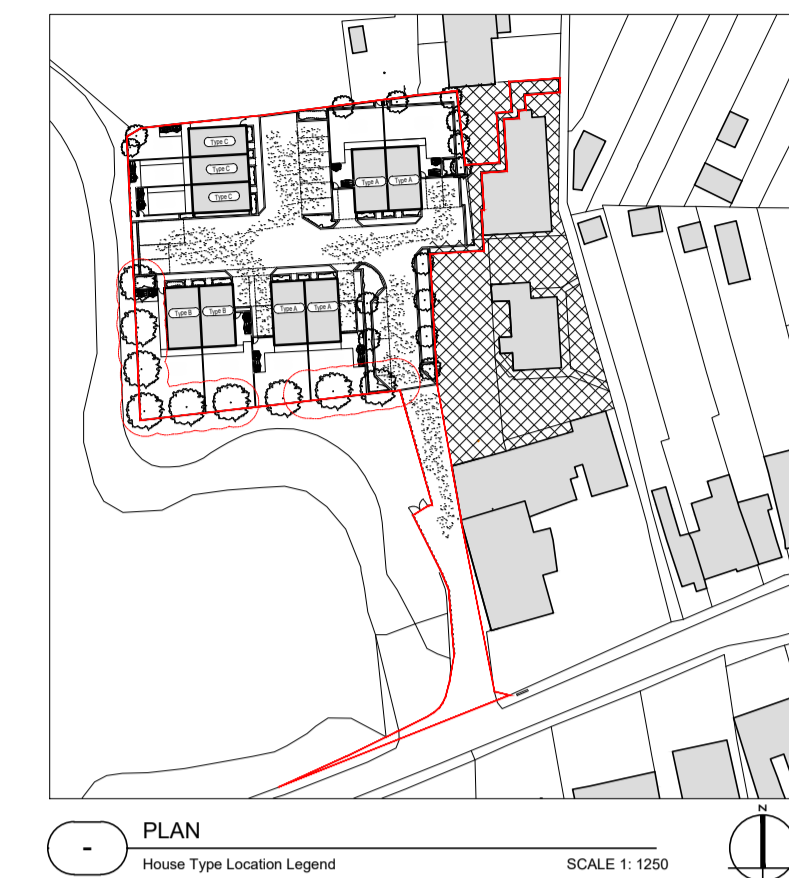
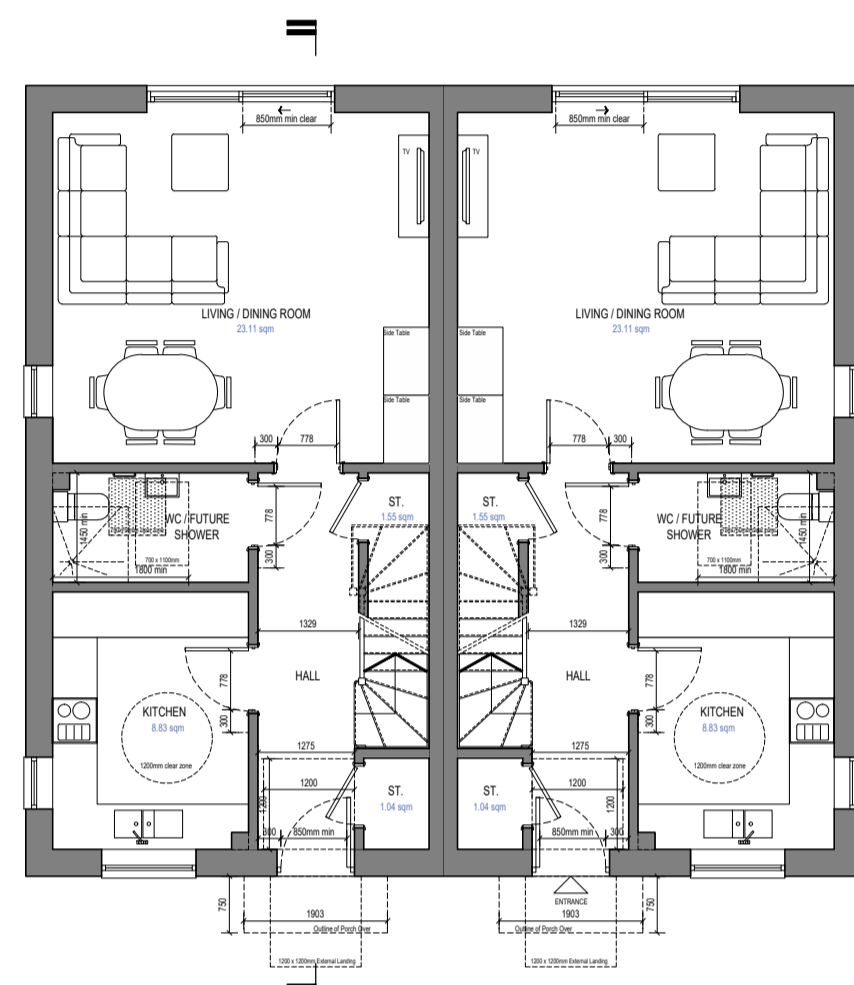


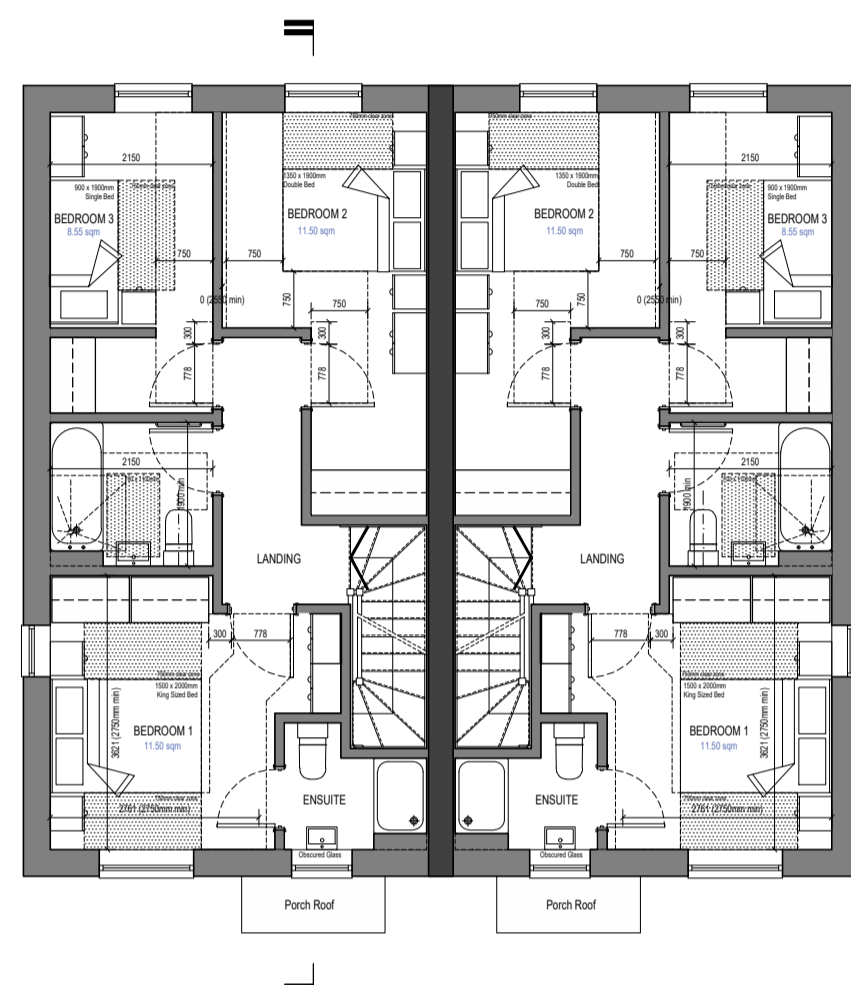
DO NOT SCALE FROM THIS DRAWING.  
 Except for planning purposes. All dimensions must be verified by the main contractor before the commencement on site of any item of work or the preparation of shop drawings for their own work or that of sub-contractor or suppliers.  
 This drawing is to be read in conjunction with all relevant documents. Any queries or discrepancies must be reported immediately to the architect.  
 This document is copyright of Studio Hudson Ltd



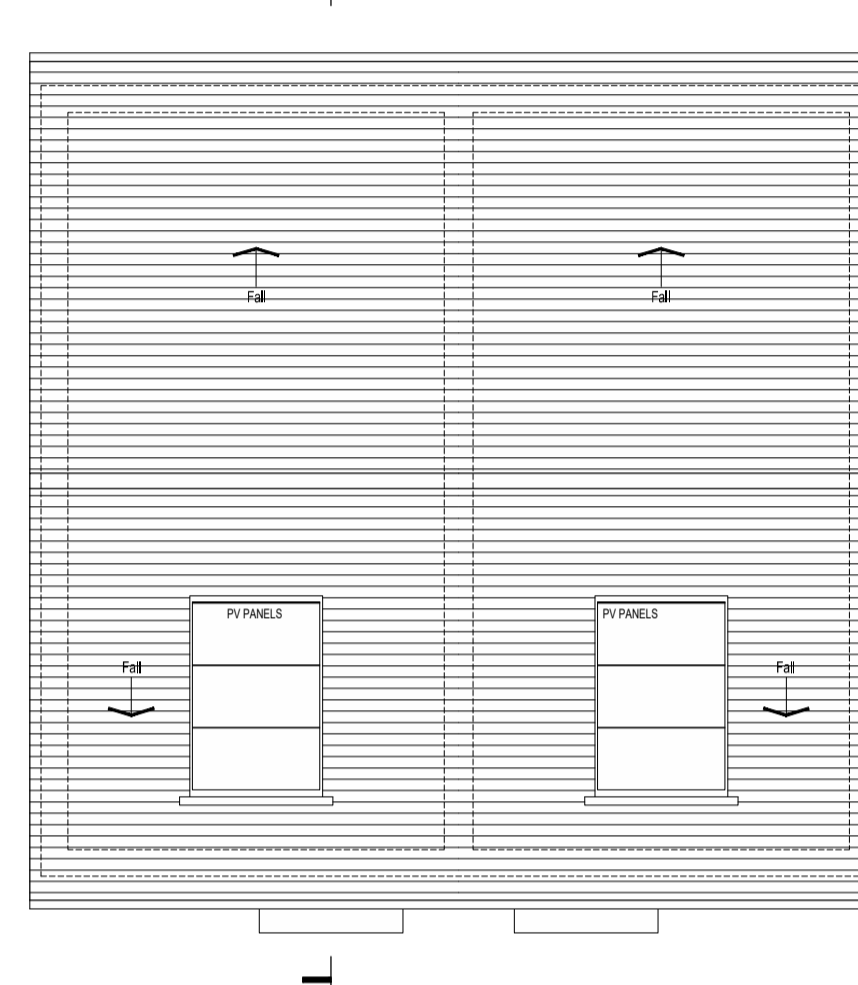
House Type A  
 (HT-A) Plots 8 - 9  
 3B5P  
 97.06sqm / 1,045sqft  
 2.59 sqm Built in Storage



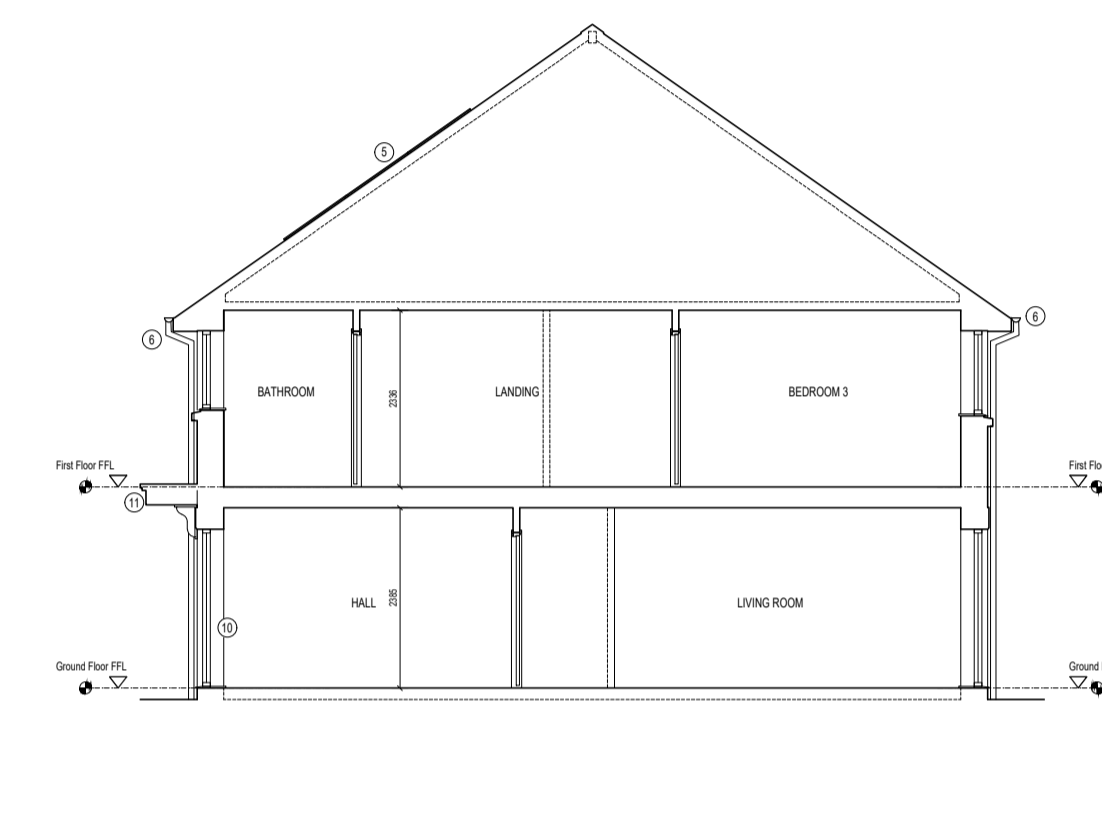
HT-A PLAN  
 Ground Floor Plan (1:100)



HT-A PLAN  
 First Floor Plan (1:100)



HT-A PLAN  
 Roof Plan (1:100)



HT-A SECTION  
 Section (1:100)

Materials Key

- ① Red multi stock facing brickwork
- ② Buff multi stock facing brickwork
- ③ Clay roof tiles
- ④ Slate roof tiles
- ⑤ Photovoltaic Roof Panels
- ⑥ White UPVC eaves, fascia, soffit boards with Black UPVC rainwater goods
- ⑦ Pebble Grey UPVC windows / doors
- ⑧ White Painted Timber Sash Windows
- ⑨ Reconstituted Stone - Portland Finish
- ⑩ Matt Black composite front door
- ⑪ White GRP porch canopy
- ⑫ Ivory T&G composite timber effect cladding
- Ⓞ Obscured glazing to windows



HT-A ELEVATION  
 Front Elevation (1:100)



HT-A ELEVATION  
 Side Elevation (1:100)



HT-A ELEVATION  
 Rear Elevation (1:100)



HT-A ELEVATION  
 Side Elevation (1:100)

For Planning Submission Purposes

Issued for discussion June 2025

<p>SCALE 1:100</p>	<p>SCALE 1:1250</p>		
<p><b>STUDIO HUDSON architects</b></p> <p>Studio Hudson Ltd. 2 Wilman Road, Royal Tunbridge Wells, Kent. TN4 9AJ          t: 01892 673 158 e: info@studio-hudson.co.uk          www.studio-hudson.co.uk</p>	<p>Project: Landscape Services Depot          Broad Lane Wilmington, Dartford. DA2 7AQ</p>	Date:	June 2025
	<p>Drawing Title:</p> <p><b>Proposed House Types</b></p>	Scale:	Noted @ A1
	<p>Drawing Number:</p> <p><b>2401-P-502</b></p>	Rev:	-