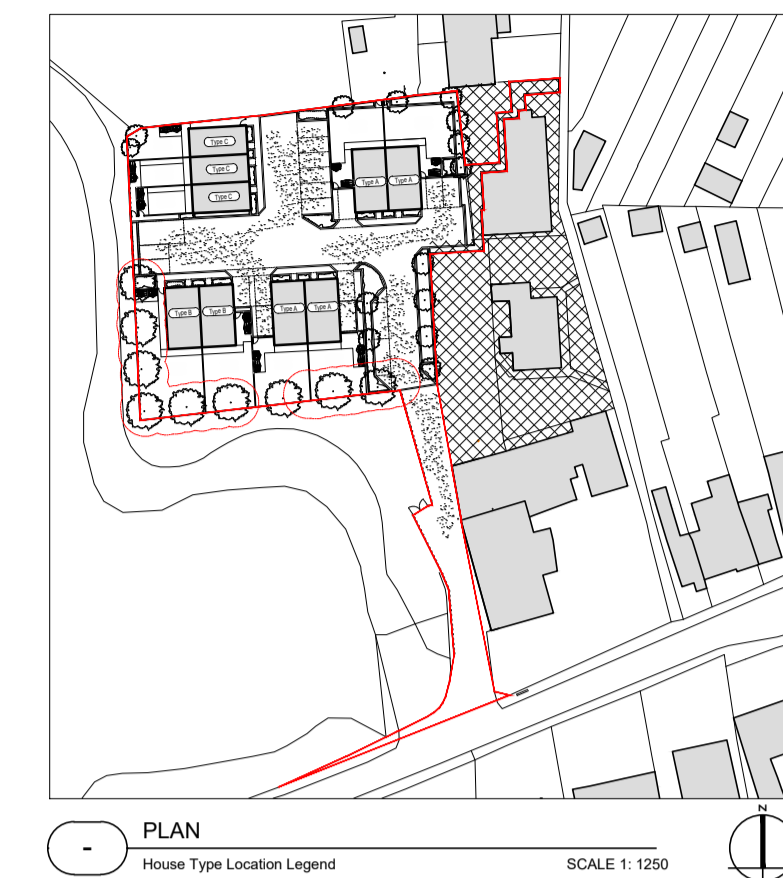
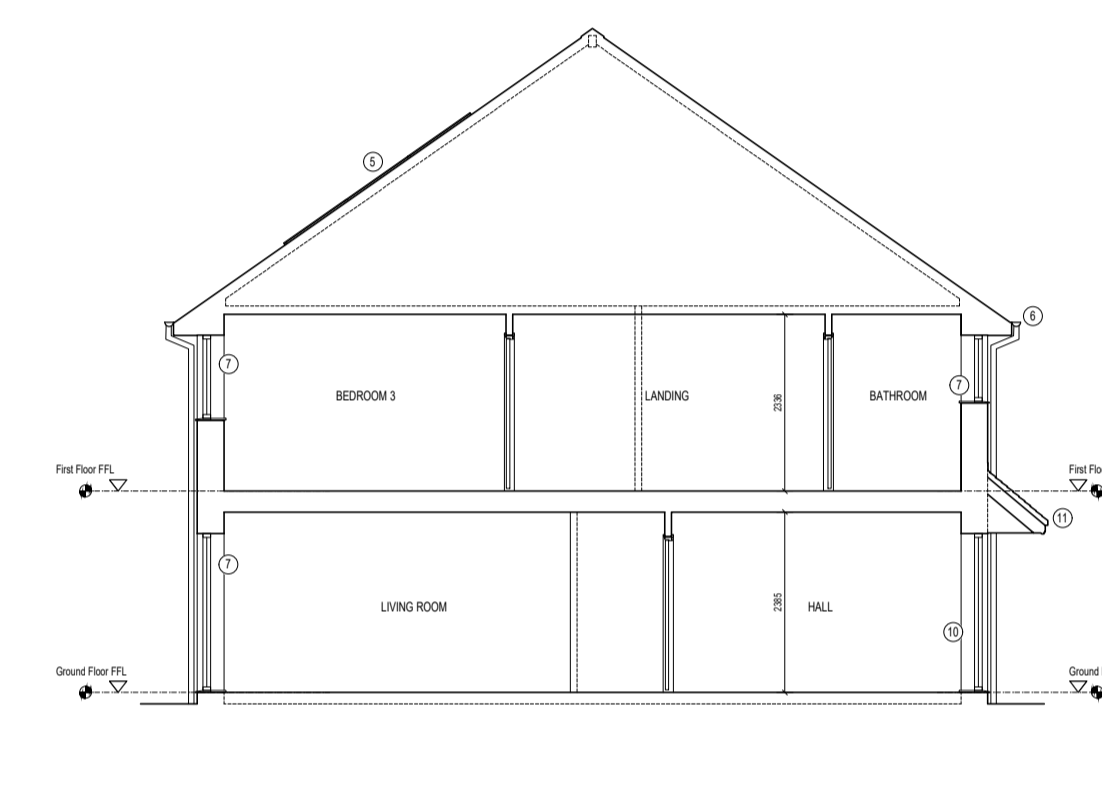
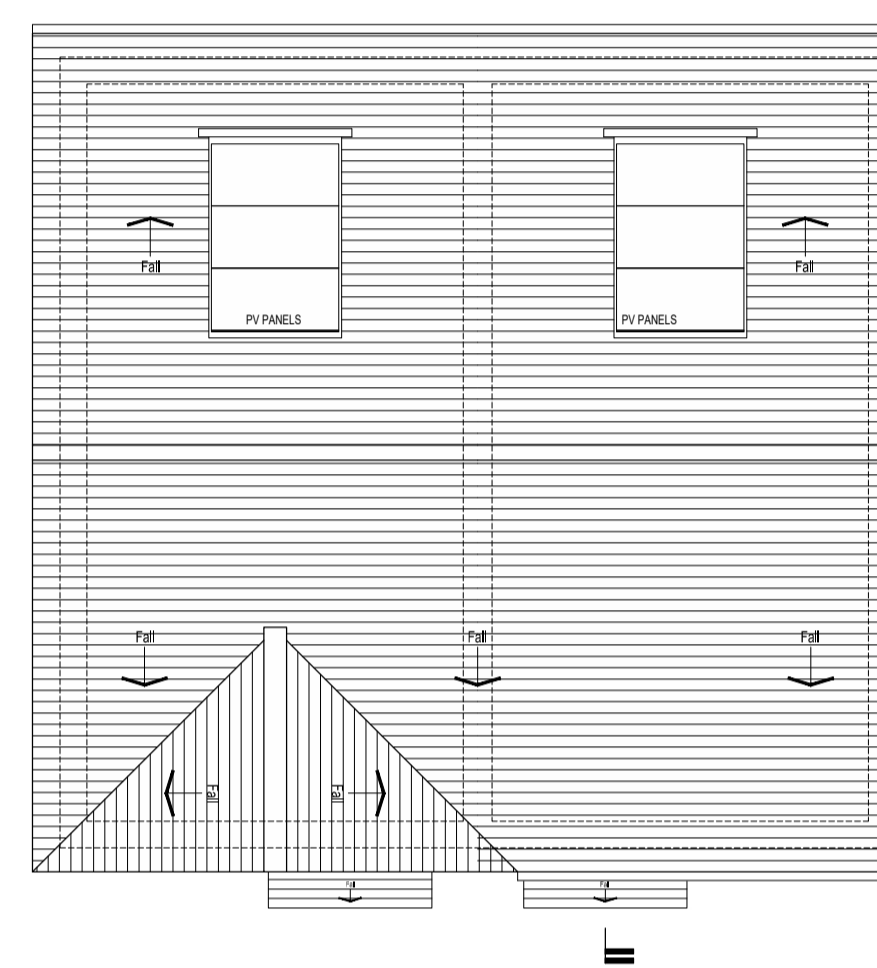
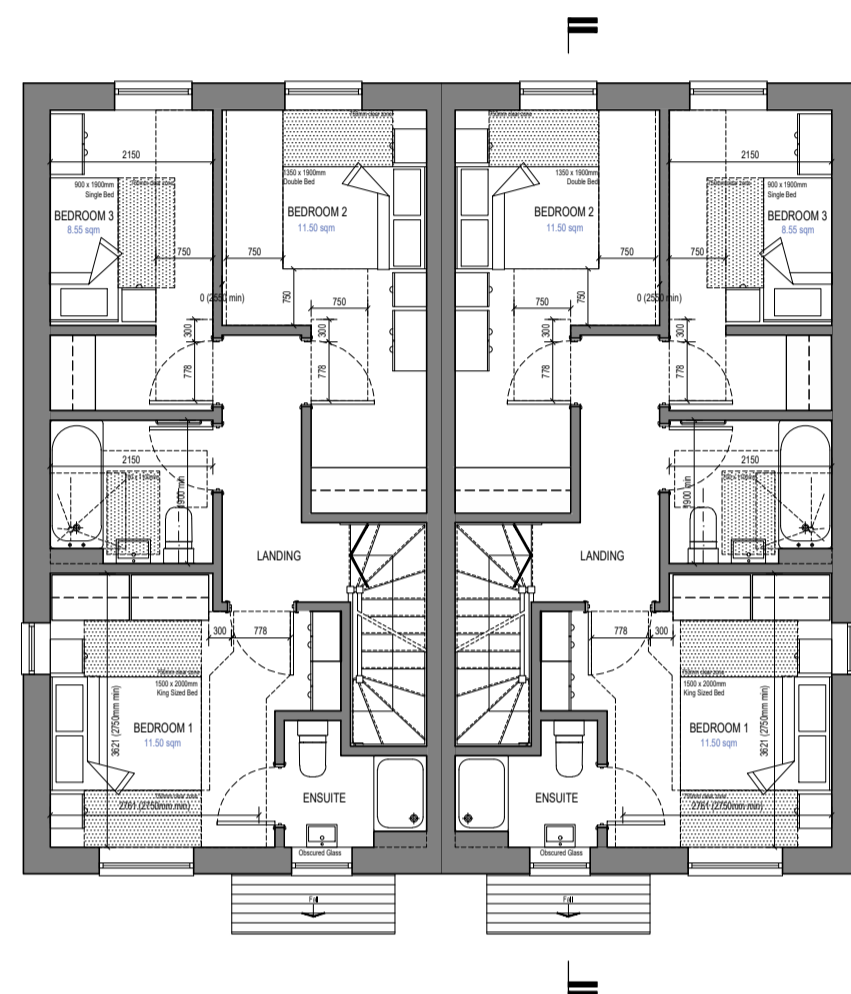
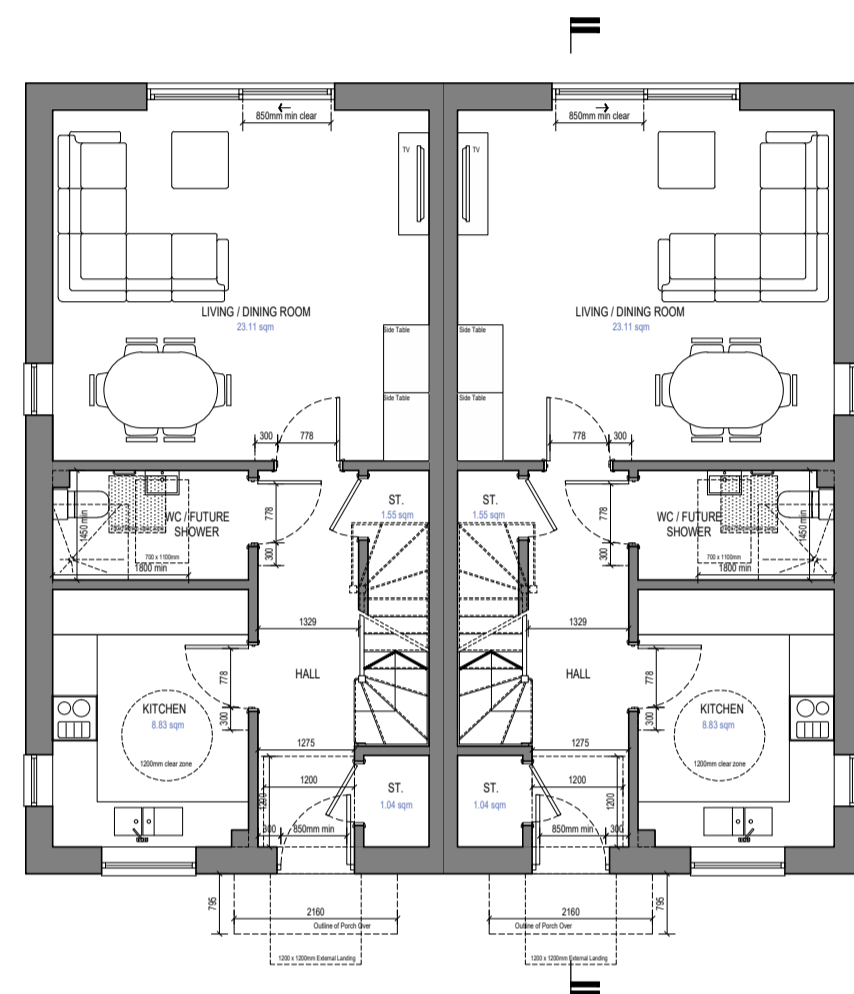


DO NOT SCALE FROM THIS DRAWING.
 Except for planning purposes. All dimensions must be verified by the main contractor before the commencement on site of any item of work or the preparation of shop drawings for their own work or that of sub-contractor or suppliers.
 This drawing is to be read in conjunction with all relevant documents. Any queries or discrepancies must be reported immediately to the architect.
 This document is copyright of Studio Hudson Ltd

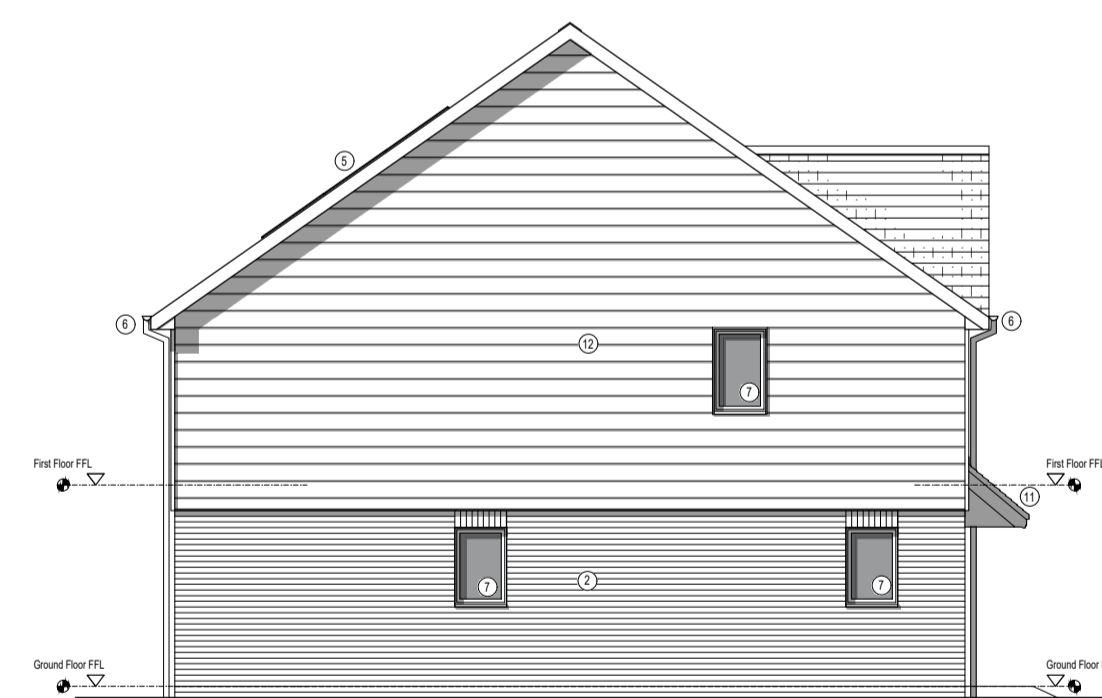


House Type A
 (HT-A) Plots 1 - 2
 3B5P
 97.06sqm / 1,045sqft
 2.59 sqm Built in Storage



Materials Key

- ① Red multi stock facing brickwork
- ② Buff multi stock facing brickwork
- ③ Clay roof tiles
- ④ Slate roof tiles
- ⑤ Photovoltaic Roof Panels
- ⑥ White UPVC eaves, fascia, soffit boards with Black UPVC rainwater goods
- ⑦ Pebble Grey UPVC windows / doors
- ⑧ White Painted Timber Sash Windows
- ⑨ Reconstituted Stone - Portland Finish
- ⑩ Matt Black composite front door
- ⑪ White GRP porch canopy
- ⑫ Ivory T&G composite timber effect cladding
- ⓄB Obscured glazing to windows



For Planning Submission Purposes

E Issued for discussion June 2025

SCALE 1:100 		SCALE 1:1250 	
STUDIO HUDSON architects Studio Hudson Ltd. 2 Wilman Road, Royal Tunbridge Wells, Kent. TN4 9AJ t: 01892 673 158 e: info@studio-hudson.co.uk www.studio-hudson.co.uk		Project: Landscape Services Depot Broad Lane Wilmington, Dartford. DA2 7AQ Drawing Title: Proposed House Types Drawing Number: 2401-P-500	Date: August 2024 Scale: Noted @ A1 Rev: E