



GREAT GROVEHURST FARM  
SITTINGBOURNE  
KENT

SUPPLEMENTARY STATEMENT  
(29.11.21)

to

BRICKEARTH EXTRACTION METHOD  
STATEMENT AS REQUESTED BY  
PLANNING PERMISSION 18/502372  
(JULY 2021)

prepared by

PAUL SHARPE ASSOCIATES LLP  
24 BEECH LEA  
BLUNSDON  
WILTS  
SN26 7DE  
Tel : 01793 700420  
e-mail – paul@paulsharpeassoc.co.uk

NOVEMBER 2021

## 1 INTRODUCTION

- 1.1 This Statement is supplementary to the Brickearth Extraction Method Statement (required by planning permission ref 18/502372 dated 2<sup>nd</sup> July 2021) prepared by Quarryplan (GB) Ltd on behalf of Wienerberger and dated July 2021, submitted pursuant to condition 14 of that permission (submission ref 21/504630/SUB).
- 1.2 This Supplementary Statement addresses the comments made by Kent County Council Highways & Transportation (06/10/21) and Mid Kent Environmental Health Services (08/10/21) and encapsulates the information contained in the responses thereto by the applicant dated 26/10/21 and 20/10/21 respectively. Thereby that correspondence is superseded.
- 1.3 This Supplementary Statement provides clarification and information, as requested, and is to be read along with the original submitted Method Statement.
- 1.4 **Timetable** – the objective of the Brickearth Extraction Method Statement is to recover the brickearth from the site by October/November 2022, ie before KCC's Grovehurst Junction Improvement Works reach their peak.
- 1.5 Matters relating to Great Crested Newt relocation, archaeological investigation and brickearth extraction are very much weather dependant and so it is not possible to provide a definitive timetable with a high degree of certainty. However, a sequence of events is anticipated as follows:-
- 1 Receipt of the Protected Species Licence from Natural England is anticipated by February 2022.
  - 2 On receipt of the Licence simultaneously:
    - (a) improve GCN receptor area in accordance with the measures detailed on drawing 4940-LLB-XX-XX-DR-L0001 Rev PO4 eg construction of hibernacula together with any other works specified by Natural England
    - (b) remove leylandi tree stumps
    - (c) erect boundary fence to Great Grovehurst Farmhouse in accordance with the approved details
    - (d) erect GCN exclusion fencing in accordance with Licence.
  - 3 From 1<sup>st</sup> March 2022 undertake GCN trapping and relocation.

- 4 Subject to weather conditions, some preliminary archaeological investigation may be possible before 1<sup>st</sup> March otherwise complete archaeological investigation following GCN relocation.
  - 5 From 1<sup>st</sup> May 2022 (weather permitting) remove brickearth in accordance with original Method Statement through to completion in October/November 2022.
- 1.5 **A249 Grovehurst Junction Improvements** – KCC is to undertake comprehensive improvement of the Grovehurst Junction utilising approved funding obtained from the Housing Investment Fund. KCC has submitted a planning application for those works which will, in part, require some land from the Grovehurst Farm site to facilitate those works. G H Dean & Co Ltd has agreed to transfer the necessary land to KCC for the works and that obligation is encapsulated within the S106 Agreement which accompanies the above mentioned planning permission.
- 1.6 The development site land required for the road works contains brickearth for which permission has been granted for its recovery. However, for engineering reasons, it is likely that KCC will prefer the brickearth to remain in situ and arrangements are incorporated within the S106 Agreement whereby if KCC indeed require the brickearth to remain then appropriate compensation for the loss of recoverable brickearth will be paid by KCC to G H Dean & Co Ltd.
- 1.7 In the unlikely event that brickearth is removed by Wienerberger from the land required for highway improvements (cross hatched blue on the plan in Appendix 1) then the land will be reinstated to existing ground level before transfer to KCC. The material for reinstatement and the method of compaction will be agreed with KCC before the brickearth is extracted.
- 1.8 Drawing D118/D14RevE contained in Appendix 1 to this Supplementary Statement shows details of the proposed detention basin to be located in the north west corner of the site incorporating levels that have been agreed with KCC. This drawing is now formally incorporated in the Brickearth Extraction Method Statement.
- 1.9 The obligations and arrangements in the S106 Agreement for the recovery of brickearth appropriately secure the objectives of KCC (as Mineral Authority) and G H

Dean and Wienerberger for the recovery of brickearth and those of KCC as the Highway Authority for the improvement of the Grovehurst Junction.

- 1.10 Elsewhere on the site, brickearth will be extracted from the majority of the site area but not on the eastern or southern boundaries or the margins immediately to the east and north of Great Grovehurst Farmhouse. There, levels are to remain unchanged for nature conservation and listed building reasons.
- 1.11 **Drainage** – a drainage culvert in the north west corner of the site provides, by gravity, a surface water outfall from the site and during the extraction of brickearth (and on completion of the development) this culvert will remain the outfall for the site. During the engineering operations to remove the brickearth any run-off from the site will be diverted through a temporary “stilling basin” with a “sedimat” (or similar) across the entrance to the culvert to prevent silt being discharged through the culvert.
- 1.12 **Phasing** – although the approved drawings show three phases of extraction, Wienerberger intend to attempt to extract all of the brickearth in one continuous process over one summer season, ie summer 2022. The reason for this is to attempt to minimise any adverse impact on local residents.
- 1.13 **Noise** – Mid Kent Environmental Health Services has requested a contact telephone number be included within the Brickearth Extraction Method Statement for its use in the event that complaints of excessive noise or dust are received direct from the public or if some reprieve of noise/vibration needs to be negotiated on behalf of residents.
- 1.14 The appropriate contact at Wienerberger for dealing with such complaints etc is **01795 421069 (Smead Dean Factory)**.
- 1.15 **Mobile plant** – the only mobile plant to be used on the site are the hydraulic excavator (loader) and HGV’s, the latter conveying the brickearth to the brickworks. Only the hydraulic excavator is likely to be left on site overnight and would, generally, be parked in the area of the former farmyard complex, well away from most residential properties.
- 1.16 **Stockpiles** – the intention is to load brickearth directly into HGV’s for transport directly to the nearby brickworks (Smead Dean Factory). The intention is to avoid

double handling and therefore on-site stockpiling is unlikely to occur. Arrangements are being made at the brickworks to create stockpile capacity to accommodate the material from the Great Grovehurst Farm site so that the extraction process can be carried out as speedily as possible.

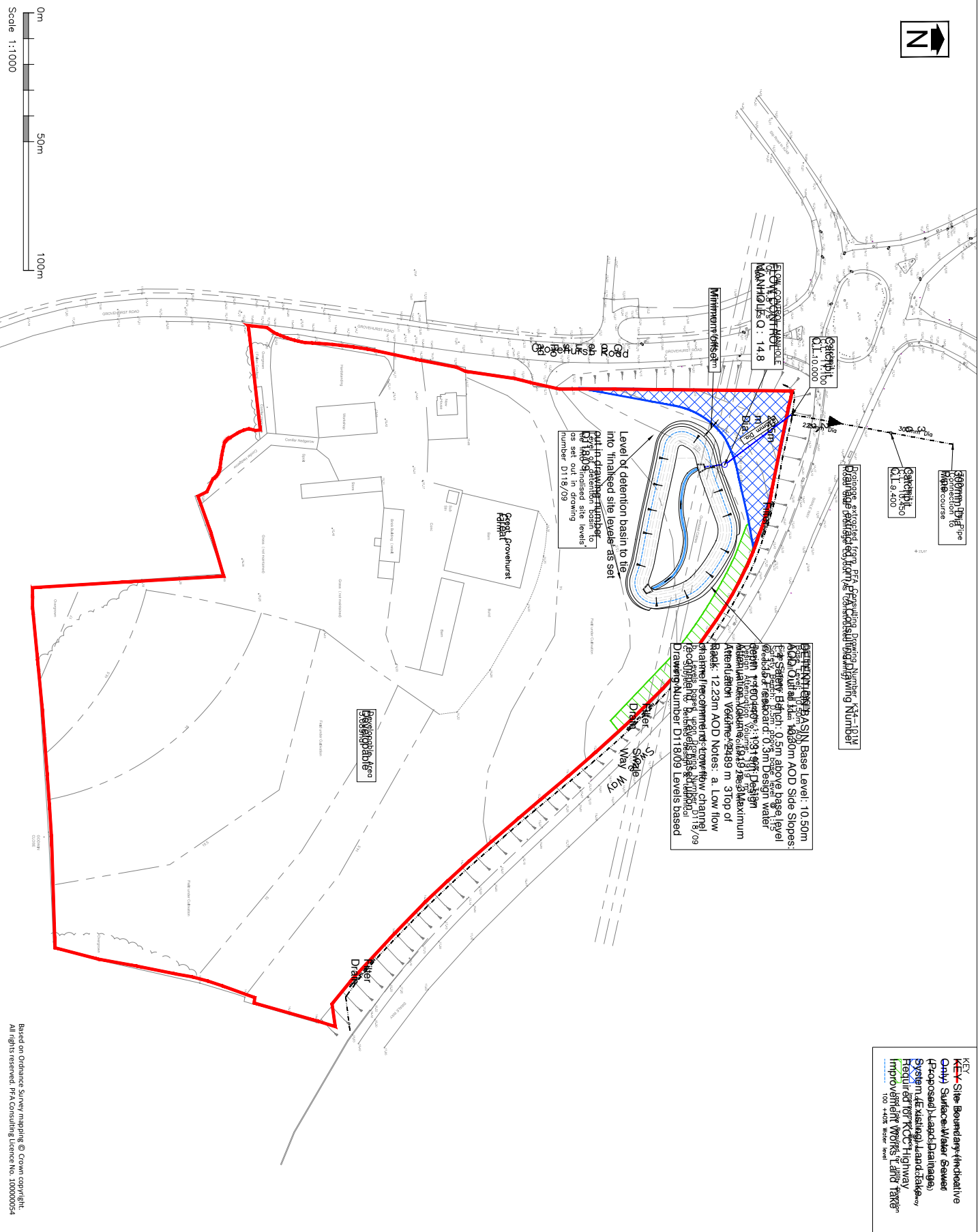
1.17 If the weather is fine the material will be transported and not stockpiled. If wet, there will be no extraction and, thereby, no dust. If any stockpiling does occur it is unlikely to be for long or extended periods but would be located in the general area of the former farmyard (accessible to the public highway) and so would be well away from most residential property. In the event, measures to mitigate dust nuisance from stockpiling would be implemented in accordance with the options set out in the Statement.

1.18 **Daily Environmental Checks** – on request, records of daily environmental checks will be made available by Wienerberger to the Local Planning Authority.

1.19 **Conclusion** – read along with the Brickearth Extraction Method Statement (July 2021) this Supplementary Statement provides for the satisfactory recovery of brickearth from the Great Grovehurst Farm site. The environmental protection measures set out take due account of all relevant local environmental sensitivities.

Supplementarystatement/26.11.21

## APPENDIX 1



**PERMITTED SIN Base Level: 10.50m**  
 Risk of Overbank Flow: 1000mm AOD Side Slopes:  
 Proposed: 1:1 on 0.5m above design level  
 Existing: 1:1 on 0.3m above design level  
 Proposed: 1:1 on 0.3m above design level  
 Existing: 1:1 on 0.3m above design level  
 Design Flood Level: 10.24m AOD  
 Maximum  
 Attenuation Volume: 1219 m<sup>3</sup>  
 Attenuation Volume: 289 m<sup>3</sup> top of  
 bank: 12.23m AOD Notes: a. Low flow  
 drainage recomputed from drawing 19/09  
 flood level of 10.24m AOD  
 Drawing Number D118/09 Levels based

Level of detention basin to the  
 into finished site level as set  
 out in drainage plan to be  
 set out in drawing  
 number D118/09

Reference extracted from PFA Consulting Drawing Number K24-1019  
 Drainage strategy for site

**KEY**  
 Site Boundary (Hydroactive)  
 Only Surface Water Drainage  
 Proposed (Large Drainage)  
 System (Existing Large Drainage)  
 Required for RCC Highway  
 Improvement Works (and other)  
 100 + AOD Water level



Station Park House, Wymondrough Road  
 Symonby, SNG 8HG  
 Telephone 01793 828000  
 Fax Number 01793 833500  
 Email admin@pfa.co.uk  
 Website www.pfa.co.uk

**NOTE 1:** This drawing is a part of a contract. It is not to be used for any other purpose.

**NOTES**  
 1. Based upon  
 Topographical Survey of MULTUM  
 LINDA BARNETT & SONS  
 SURVEY - WYCHINGTON ROAD  
 SHARPOUR, N. LINCOLN  
 MIDDLEGTON OPTION PLAN REV B DRAFT  
 REV B DRAFT - TYPICAL DRAINAGE  
 NUMBERS  
 DRAINAGE STRATEGY SHOULD BE READ IN  
 CONJUNCTION WITH DRAINAGE STRATEGY  
 DRAWING NUMBER D118/09

Rev	Date	Description	Initials	Checked
A	16/07/16	Permitted basin redrafted. Model work.	NG	BF
B	21/07/16	Final plan updated to better reflect the model.	BF	BF
C	26/07/18	Ground level and site updated for construction of rev B plan. Attenuation volumes.	BF	BF
D	12/01/21	Permitted basin redrafted due to RCC highway improvement works.	DAD	BF
E	12/01/21	Minor amendments	DAD	BF

STATUS: FOR PLANNING

Client  
**G H Dean & Co Ltd**

Project  
**Great Grovehurst Farm  
 Sittingbourne**

Drawing Title  
**Outline Surface Water  
 Drainage Strategy**

Drawing No.  
**D118/14** Rev E

Date	April 2016
Scale	1:1000 @ A2
Drawn By	NG
Checked By	BF
E-mail	bro@pfa.co.uk
File Ref	D118/Drawing/D118_14.dwg

Based on Ordnance Survey mapping © Crown copyright.  
 All rights reserved. PFA Consulting Licence No. 100000554