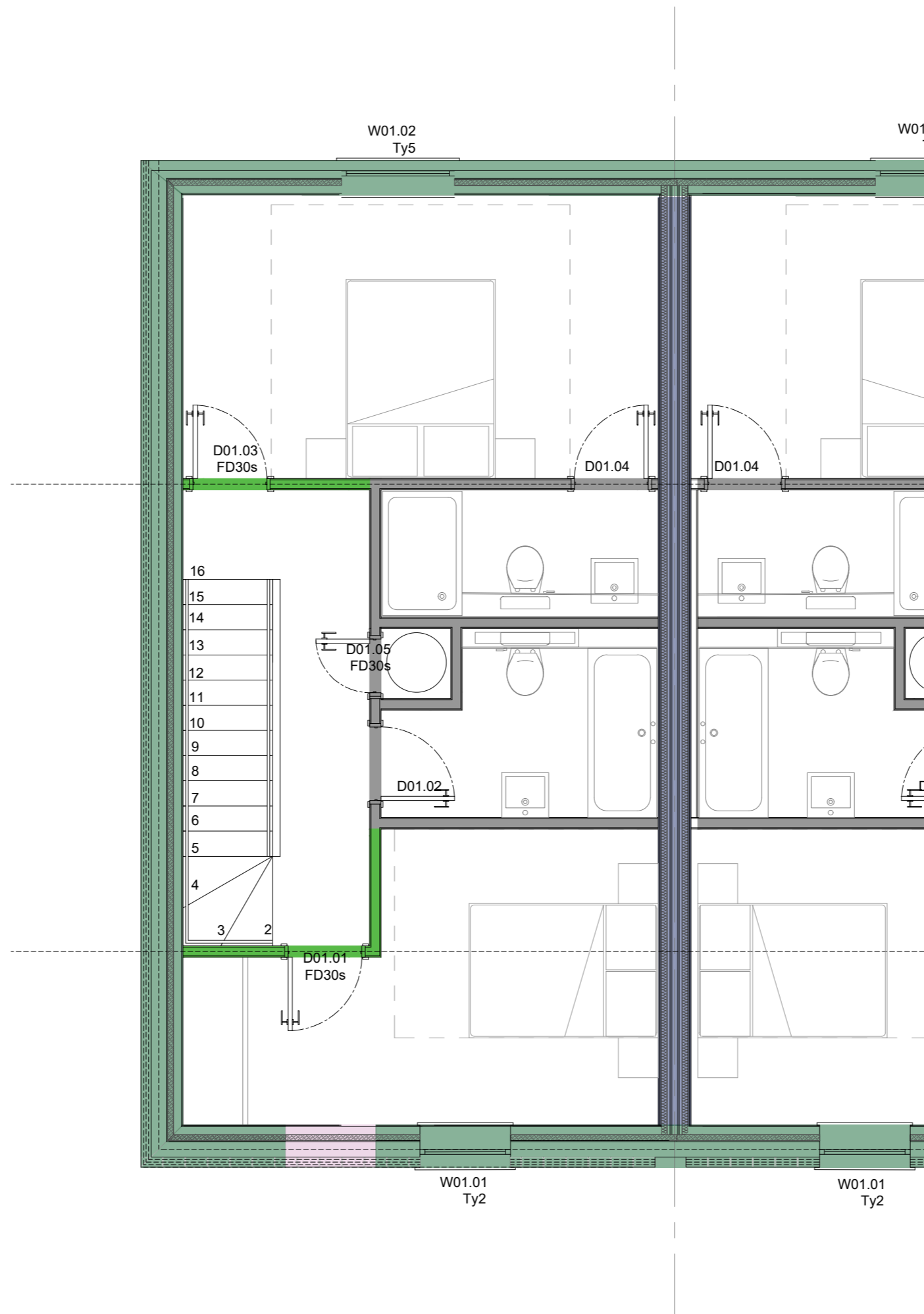
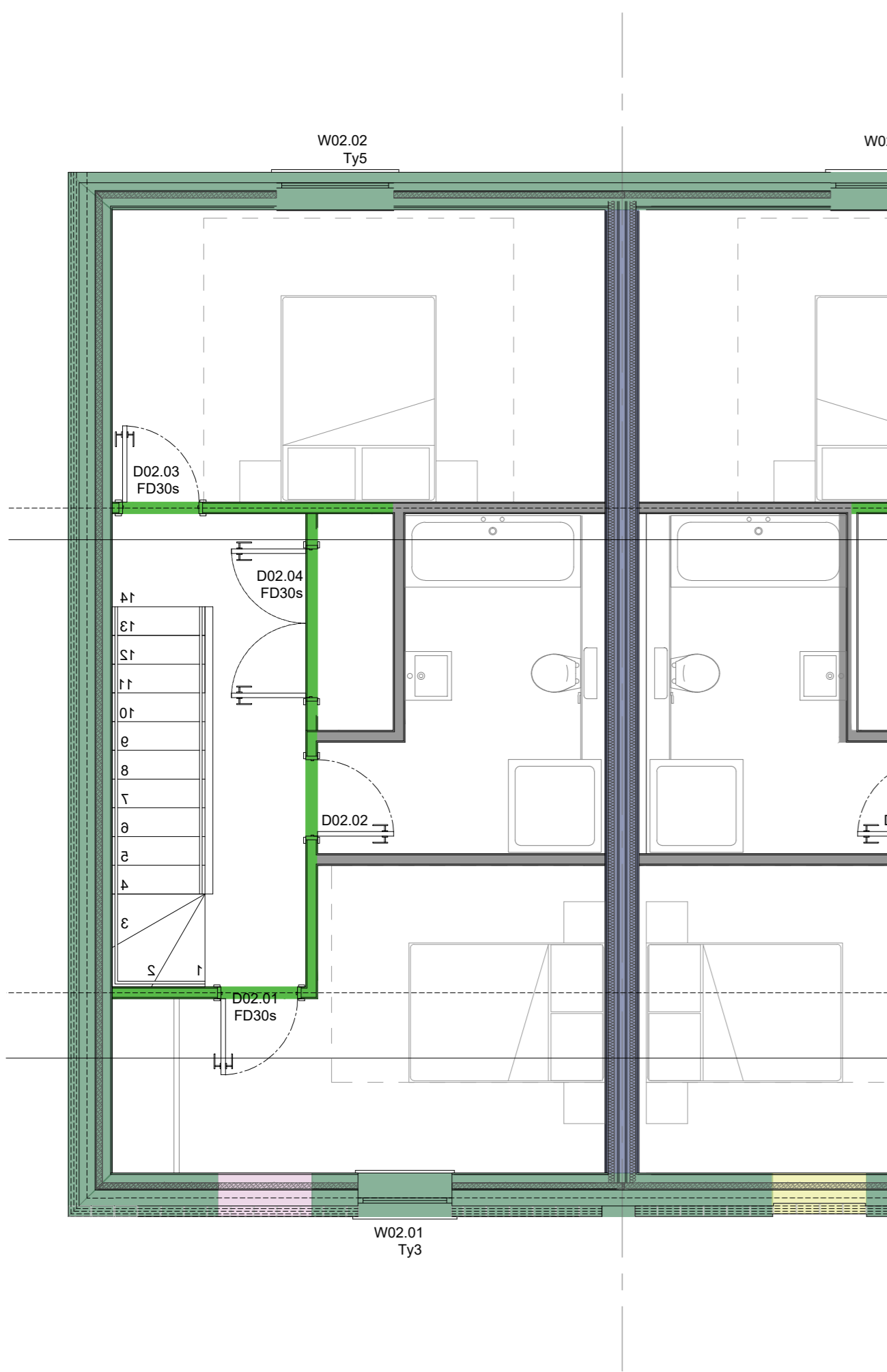


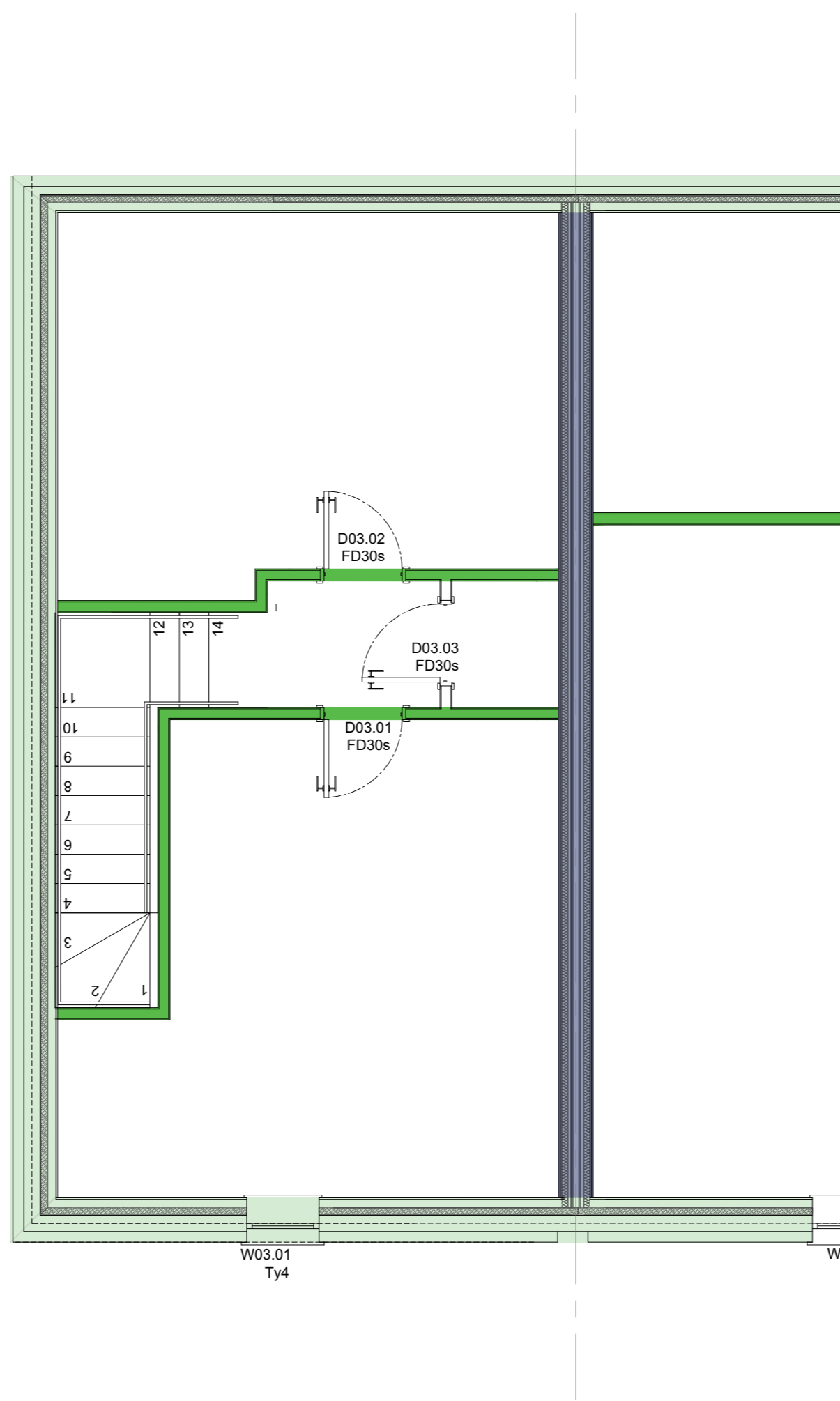
GROUND FLOOR PLAN @ 1:50



FIRST FLOOR PLAN @ 1:50

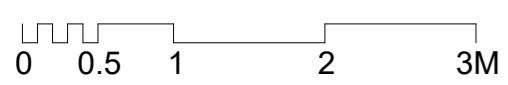
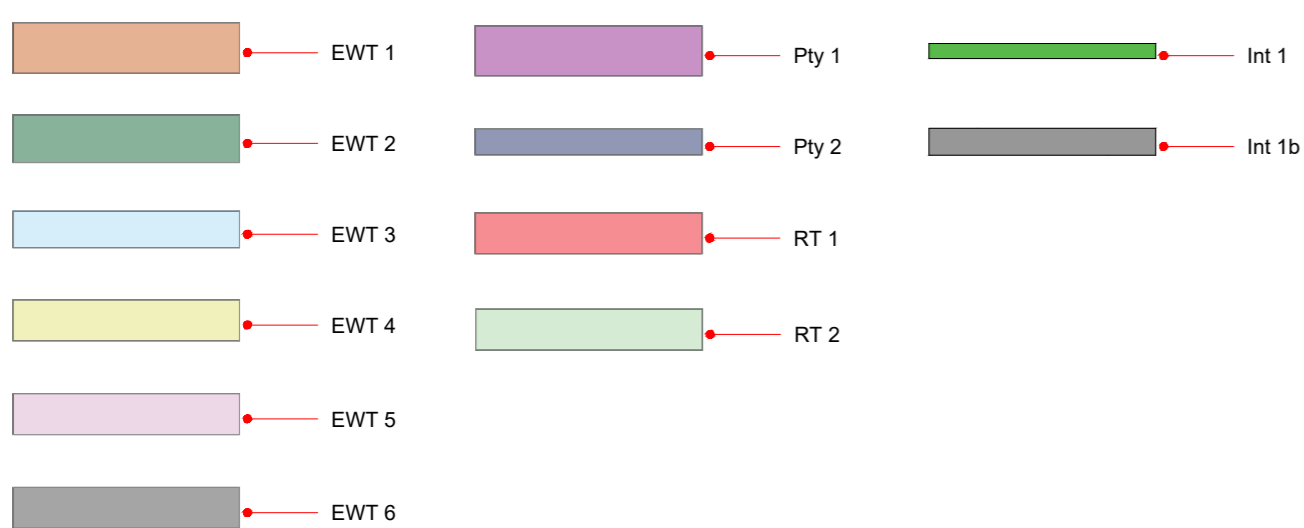


SECOND FLOOR PLAN @ 1:50



THIRD FLOOR PLAN @ 1:50

00 For information 20.09.21 SS



# Hollaway

London | 10a Acton Street | London | WC1X 9ND  
 T +44 (0) 20 7096 9429 | E london@hollawaystudio.co.uk | W www.hollawaystudio.co.uk  
 Kent | The Treadway Stables | Ramport Road | Hythe | Kent | CT21 5SG  
 T +44 (0) 1303 260 515 | E kent@hollawaystudio.co.uk | W www.hollawaystudio.co.uk

Project | Royal Victoria Hospital  
 Client | RVH Folkestone Ltd  
 Title | House Type 6 - Wall Type plans  
 Status | FOR INFORMATION

Scale | A1 | 1:50 Date | 06.09.21 Drawn | SS Chk'd | SS

Project Number Drawing Number Revision  
 18,140-A-H6-100.010 00

Bim Number