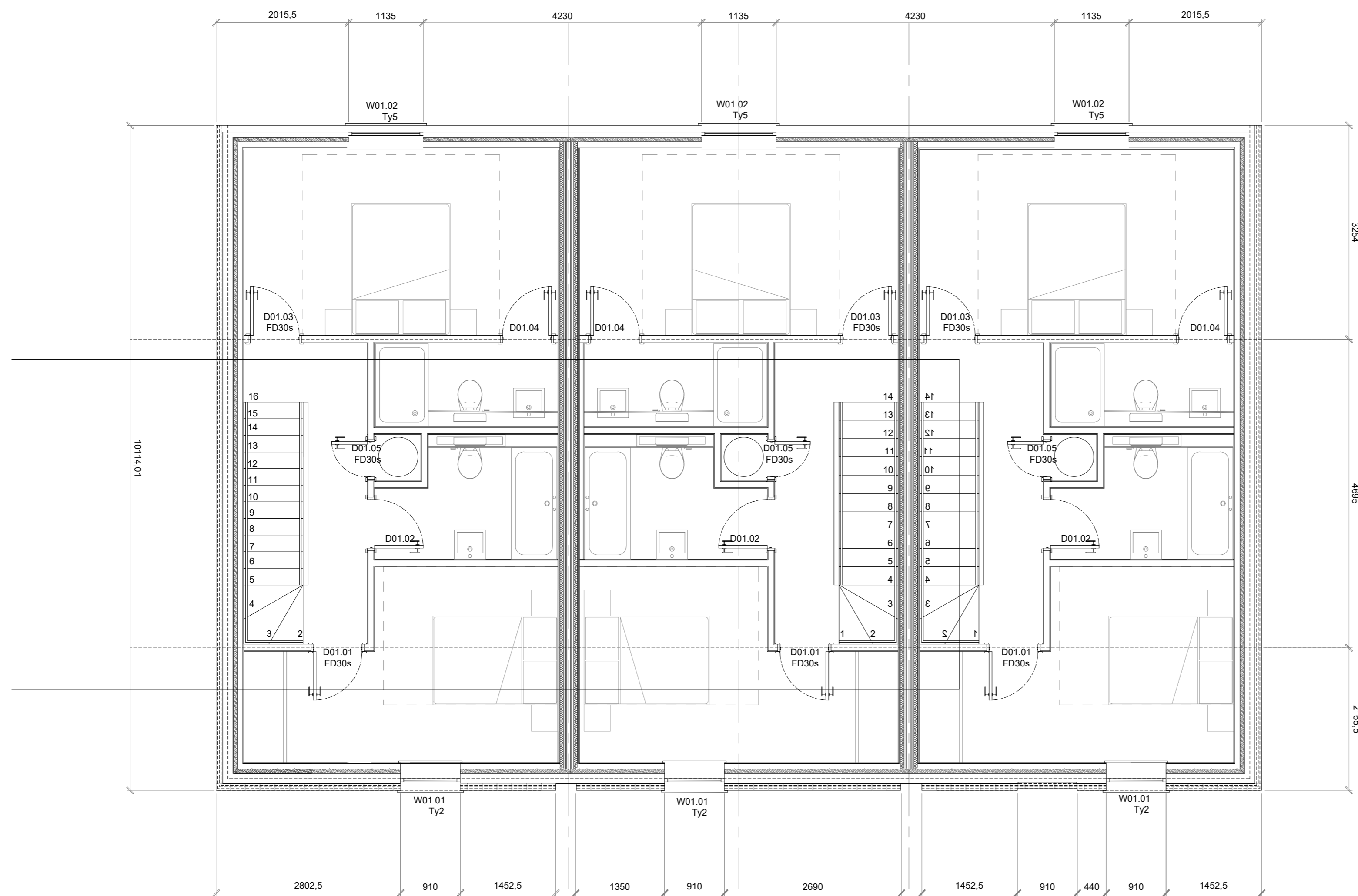


SECOND FLOOR PLAN @ 1:50



FIRST FLOOR PLAN @ 1:50

00 For information 20.09.21 SS

# Hollaway

London | 30a Acton Street | London | WC2B 9NG  
 T +44 (0) 20 7096 5425 | E london@hollawaystudio.co.uk | W www.hollawaystudio.co.uk  
 Kent | The Tramway Studios | Rampart Road | Hythe | Kent | CT21 5BG  
 T +44 (0)1323 260 515 | E kent@hollawaystudio.co.uk | W www.hollawaystudio.co.uk

Project | Royal Victoria Hospital

Client | RVH Folkestone Ltd

Title | House Type 6 - GAs 2

Status | FOR INFORMATION

Scale | A1 | 1:50 Date | 15.09.21 Drawn | SS Chk'd | MP

Project Number | Drawing Number | Revision  
 18.140-A-H6-100.001 00  
 Bim Number

