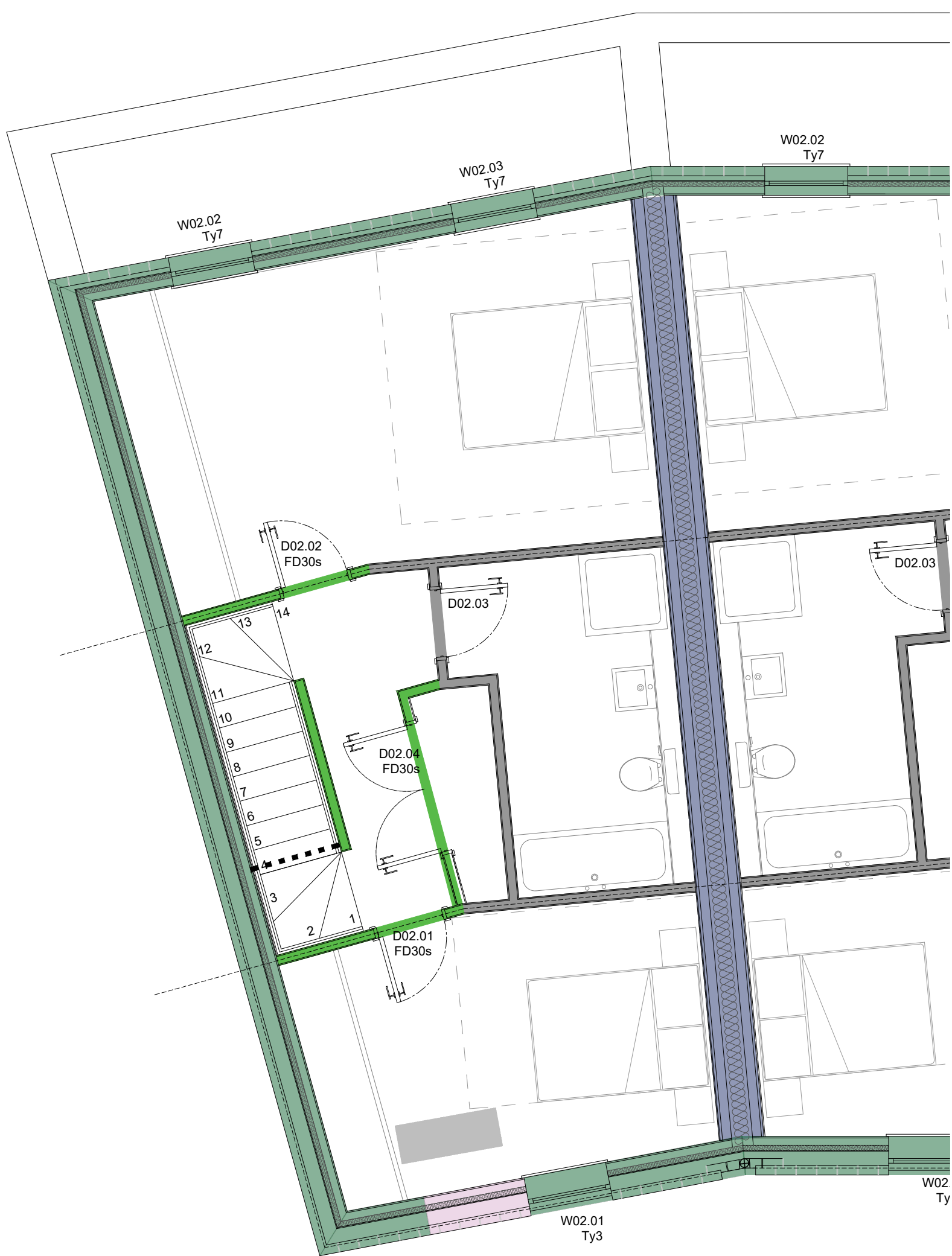




GROUND FLOOR PLAN @ 1:50



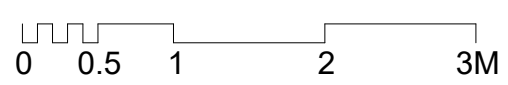
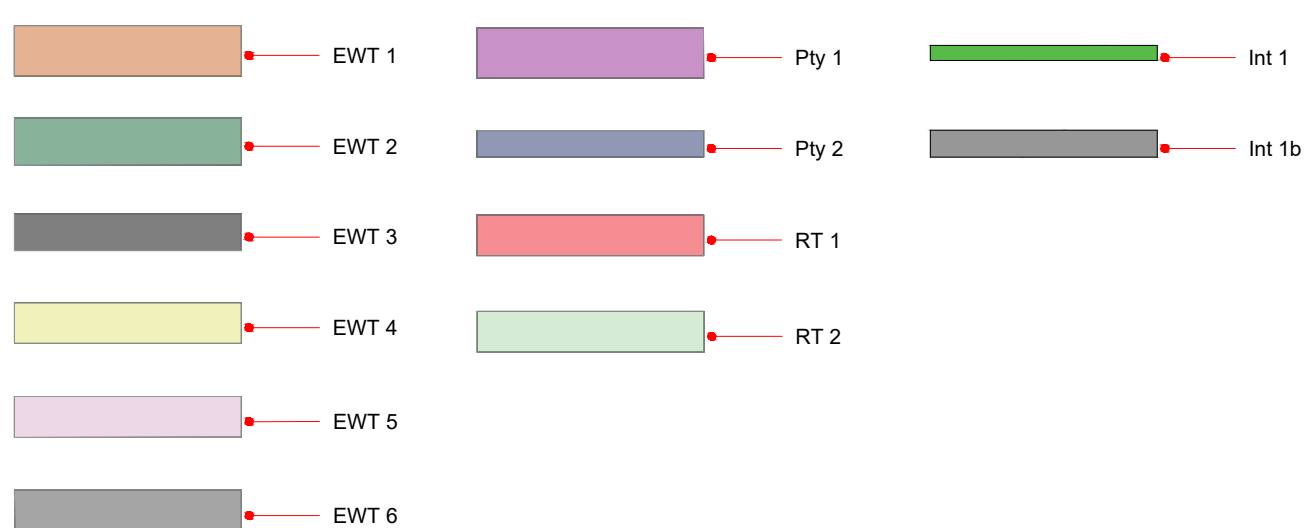
FIRST FLOOR PLAN @ 1:50



SECOND FLOOR PLAN @ 1:50



THIRD FLOOR PLAN @ 1:50



00 For information 20.09.21 SS

Hollaway

London | 30a Acton Street | London | WC2H 9PG
 T +44 (0) 20 7096 5425 | E london@hollawaystudio.co.uk | W www.hollawaystudio.co.uk
 Kent | The Tramway Studios | Rampart Road | Hythe | Kent | CT21 5BG
 T +44 (0)1303 260 513 | E kent@hollawaystudio.co.uk | W www.hollawaystudio.co.uk

Project | Royal Victoria Hospital
 Client | RVH Folkestone Ltd
 Title | House Type 5 - GAs 1
 Status | FOR INFORMATION

Scale: A1 | 1:50 Date | 13.09.21 Drawn | SS Chk'd | SS

Project Number Drawing Number Revision
 18.140-A-H5-100.010 00
 Bim Number