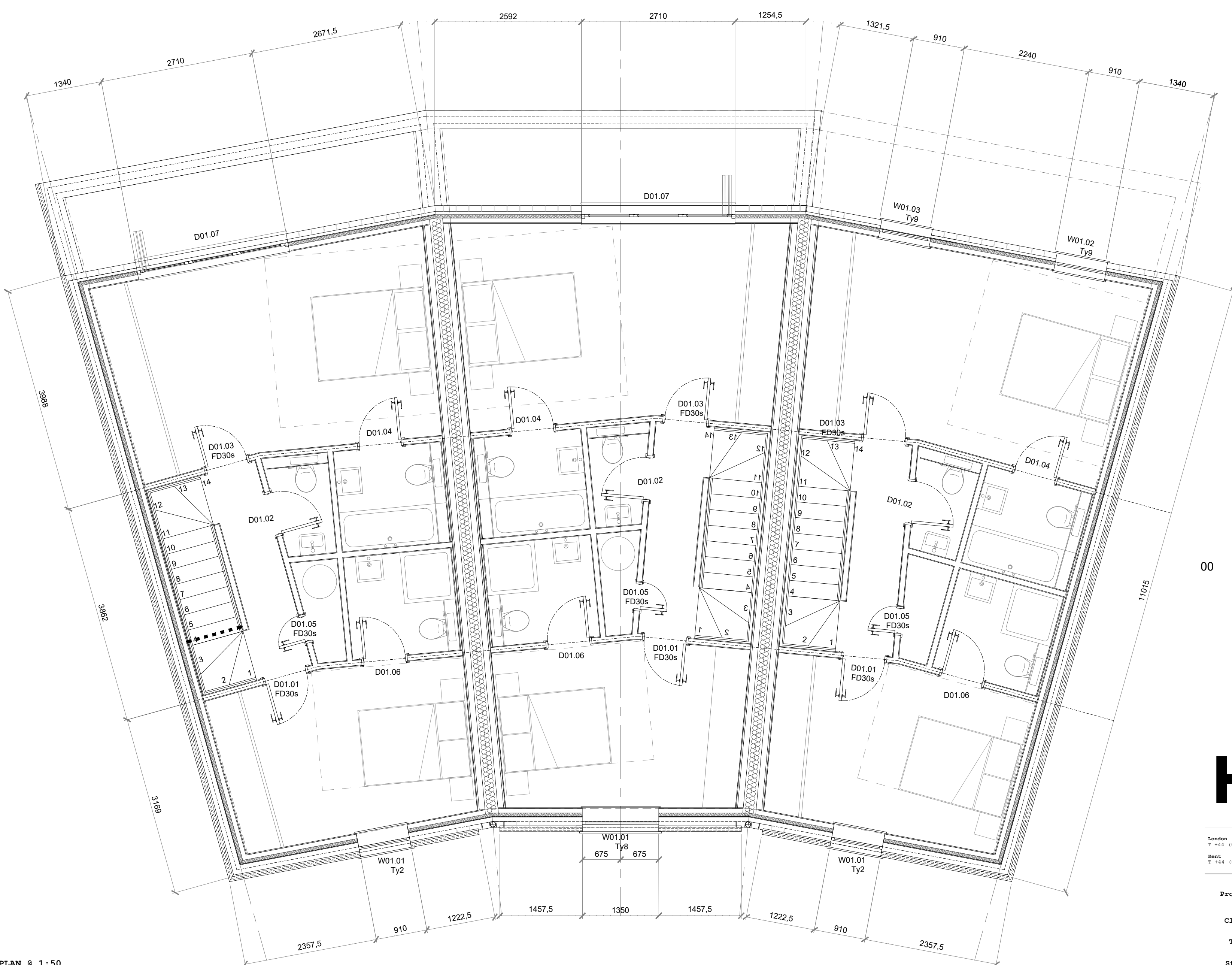


SECOND FLOOR PLAN @ 1:50



FIRST FLOOR PLAN @ 1:50

00 For information 20.09.21 SS

# Hollaway

London | 30a Acton Street | London | W3 3RD  
 T +44 (0) 20 7096 5425 | E london@hollawaystudio.co.uk | www.hollawaystudio.co.uk  
 Kent | The Tramway Studios | Ramport Road | Hythe | Kent | CT21 5BG  
 T +44 (0)1323 260 513 | E kent@hollawaystudio.co.uk | www.hollawaystudio.co.uk

Project | Royal Victoria Hospital  
 Client | RVH Folkestone Ltd  
 Title | House Type 5 - GAs 2  
 Status | FOR INFORMATION  
 Scale | A1 | 1:50 Date | 15.09.21 Drawn | SS Chk'd | MP

Project Number Drawing Number Revision  
 18.140-A-H5-100.00 00  
 Bim Number

