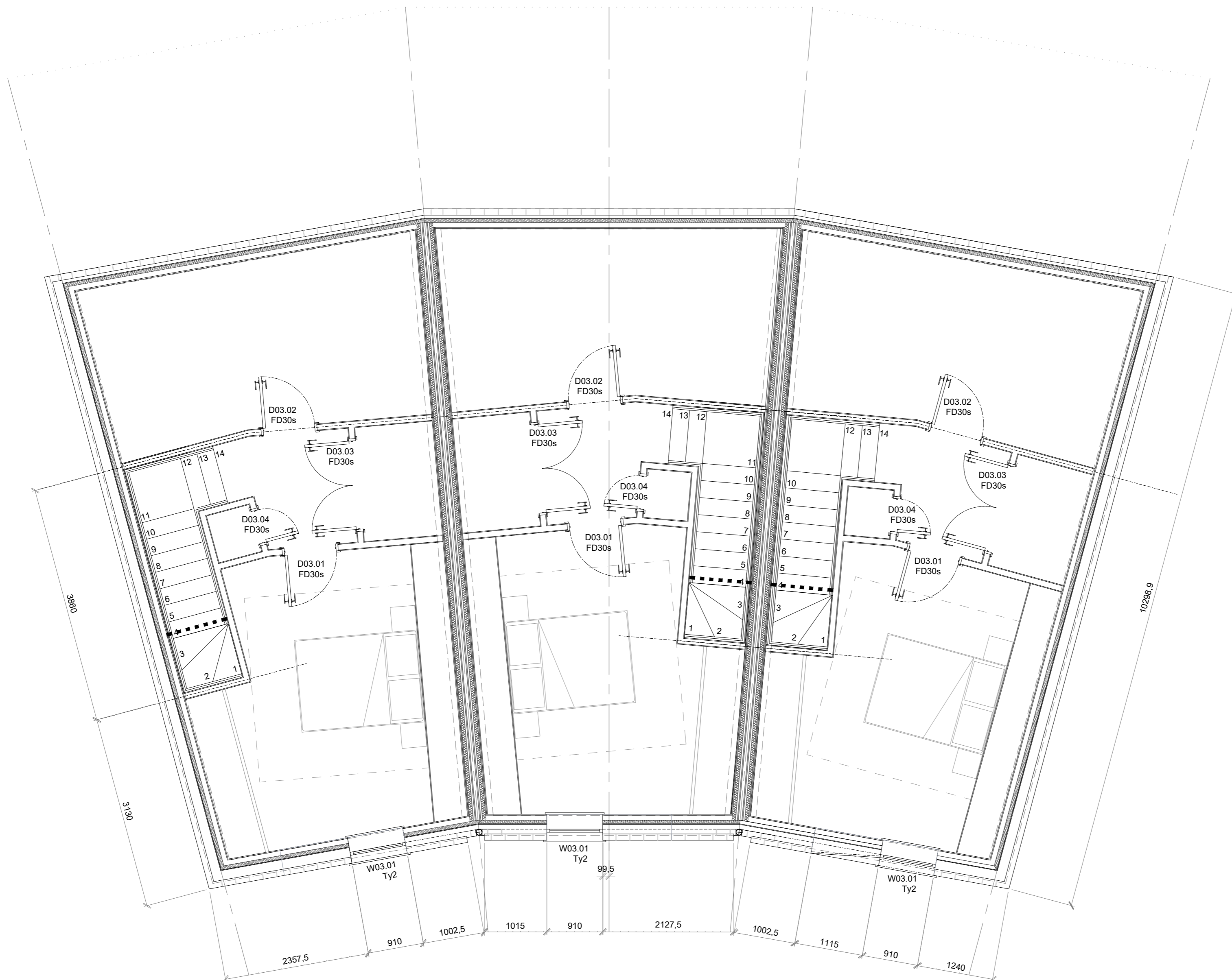


ROOF PLAN @ 1:50



THIRD FLOOR PLAN @ 1:50

00 For Information 20.09.21 SS

Hollaway

London | 30a Acton Street | London | WC2H 9HG
 T +44 (0) 20 7096 5425 | E london@hollawaystudio.co.uk | W www.hollawaystudio.co.uk
 Kent | The Tramway Studios | Ramport Road | Hythe | Kent | CT21 5BG
 T +44 (0)1303 260 515 | E kent@hollawaystudio.co.uk | W www.hollawaystudio.co.uk

Project | Royal Victoria Hospital
 Client | RVH Folkestone Ltd
 Title | House Type 3 - GAs 3
 Status | FOR INFORMATION

Scale: A1 | 1:50 Date | 15.09.21 Drawn | SS Chk'd | MP

Project Number | Drawing Number | Revision
 18.140-A-H3-100.002 00
 Bim Number

