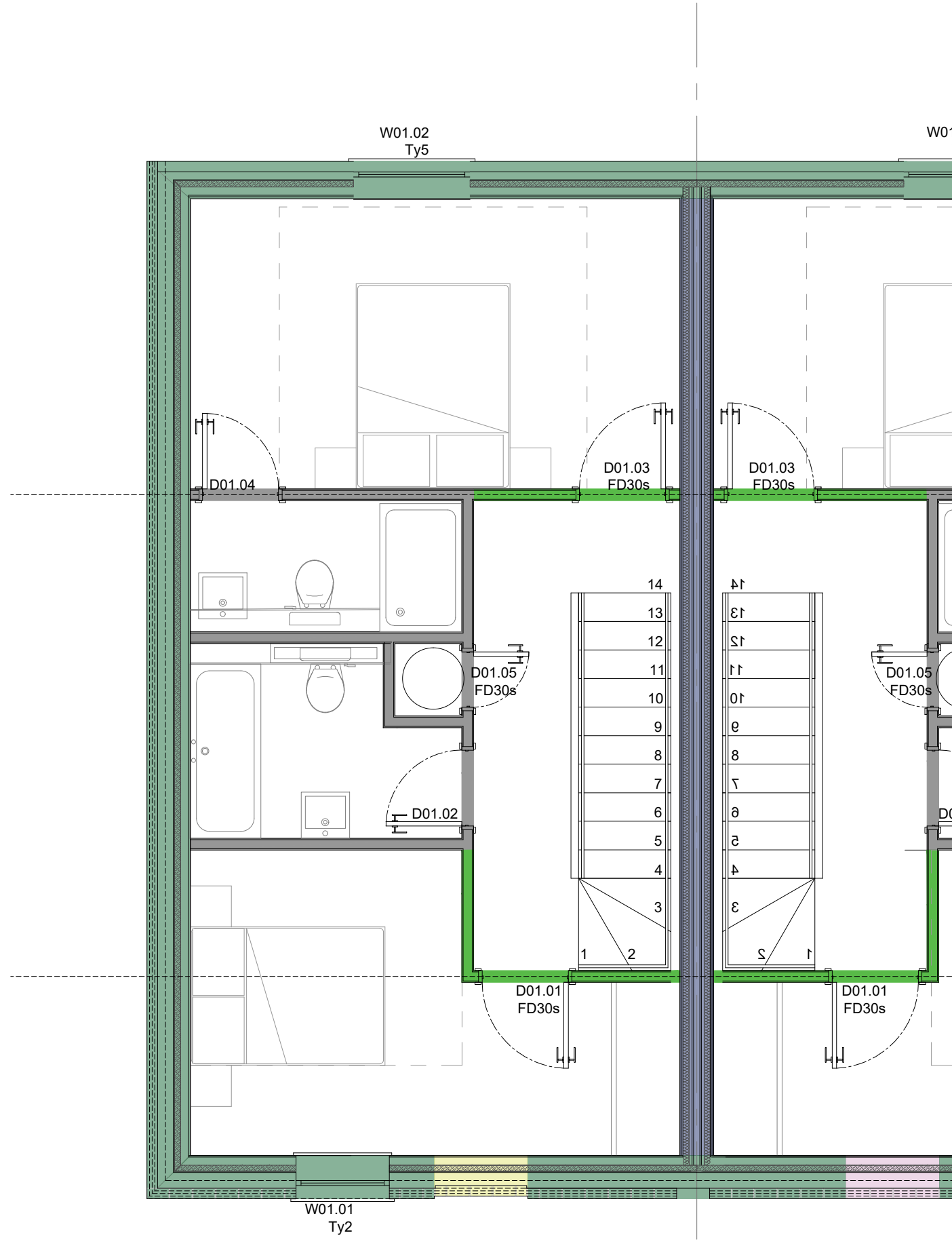
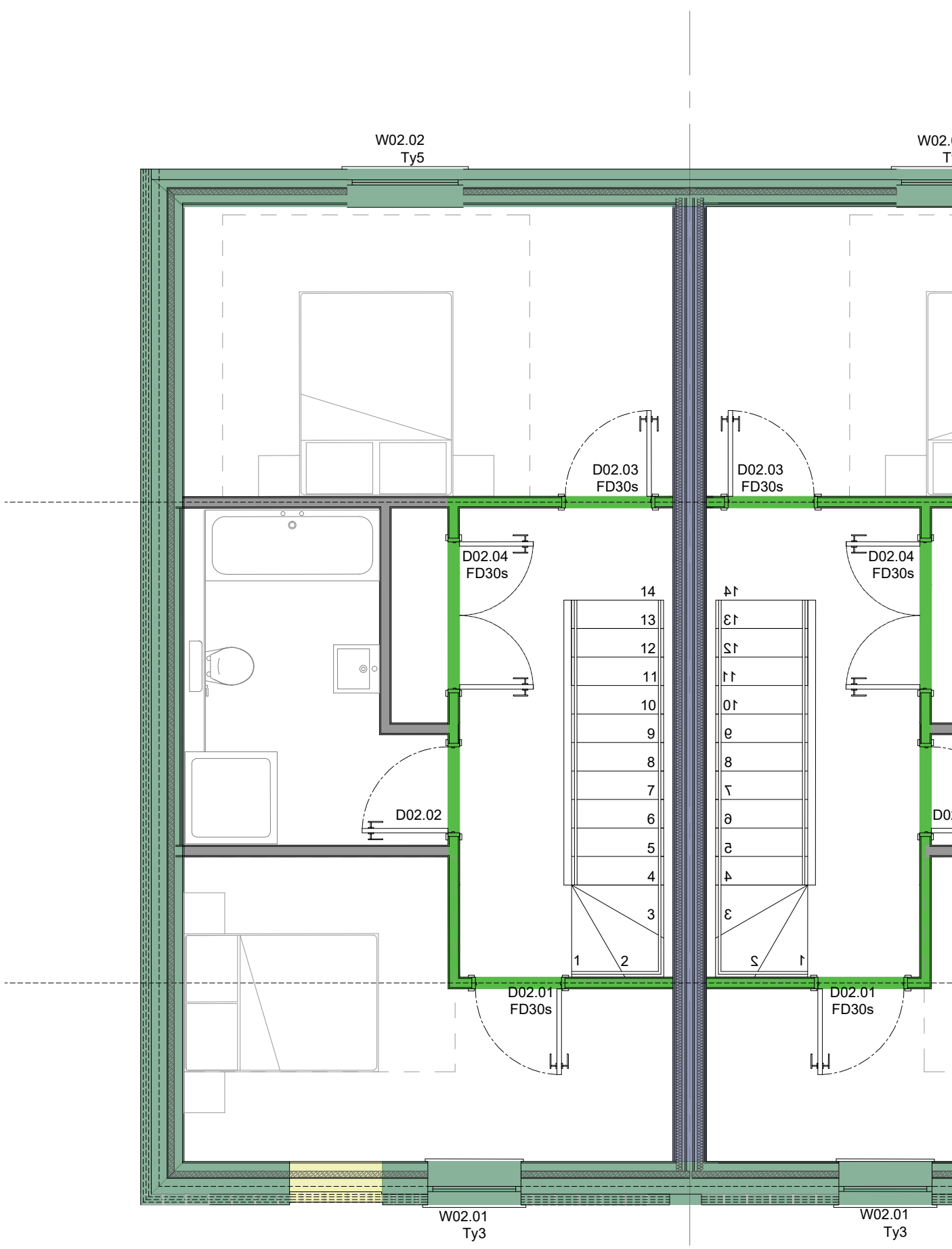


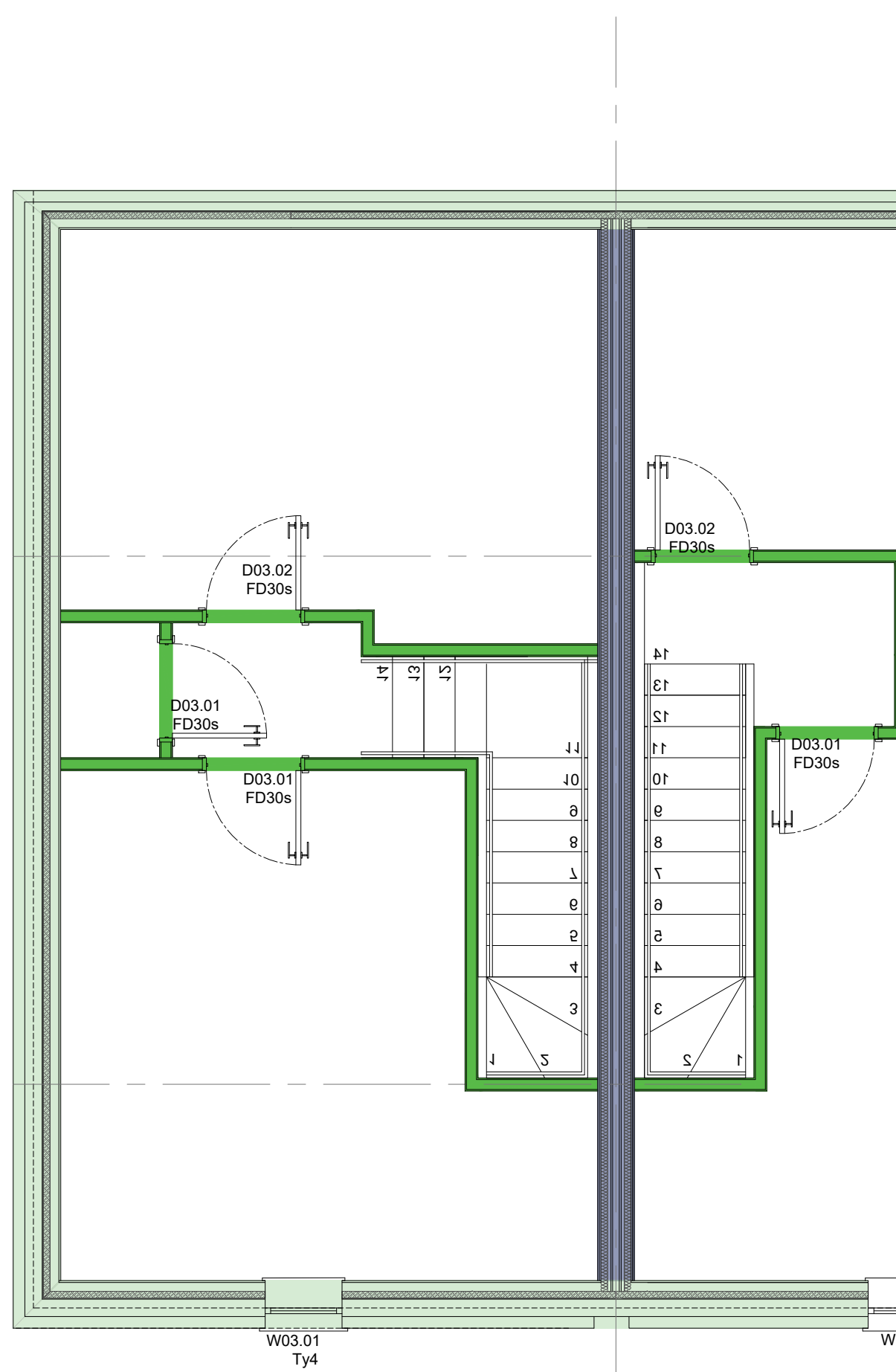
GROUND FLOOR PLAN @ 1:50



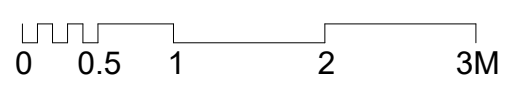
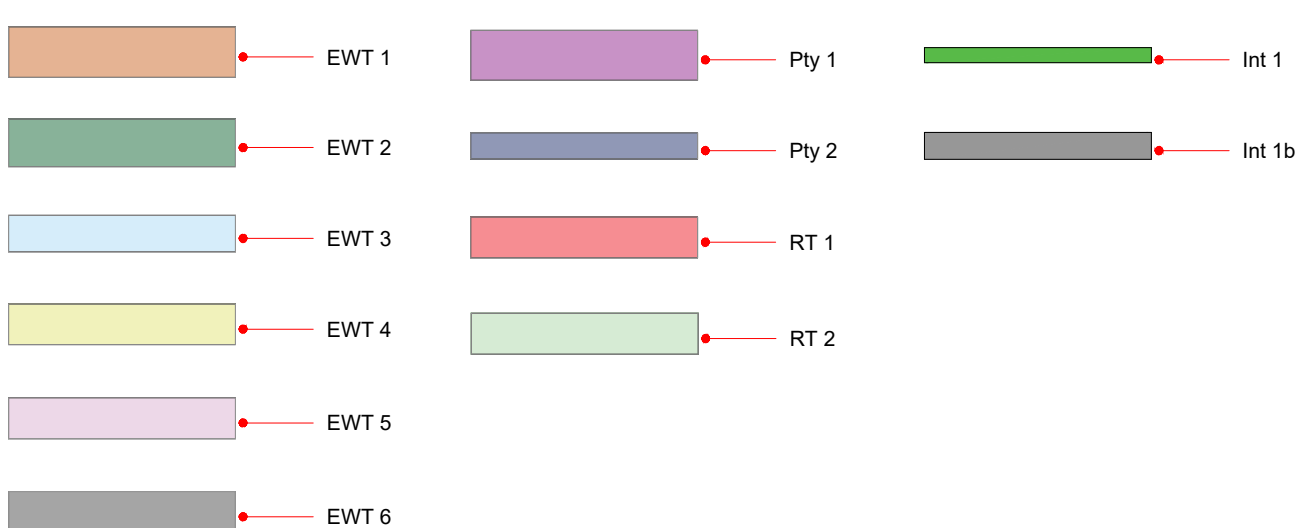
FIRST FLOOR PLAN @ 1:50 (with supporting steelwork shown below)



SECOND FLOOR PLAN @ 1:50



THIRD FLOOR PLAN @ 1:50



00 For information 20.09.21 SS

# Hollaway

London | 30a Acton Street | London | WC2H 9NG  
 T +44 (0) 20 7096 5425 | E london@hollawaystudio.co.uk | www.hollawaystudio.co.uk  
 Kent | The Tramway Studios | Rampart Road | Hythe | Kent | CT21 5BG  
 T +44 (0)1303 260 515 | E kent@hollawaystudio.co.uk | www.hollawaystudio.co.uk

Project | Royal Victoria Hospital  
 Client | RVH Folkestone Ltd  
 Title | House Type 2 - Wall Type plans  
 Status | FOR INFORMATION

Scale | A1 | 1:50 Date | 06.09.21 Drawn | SS Chk'd | SS

Project Number | Drawing Number | Revision  
 18.140-A-H2-100.010 00  
 Bim Number