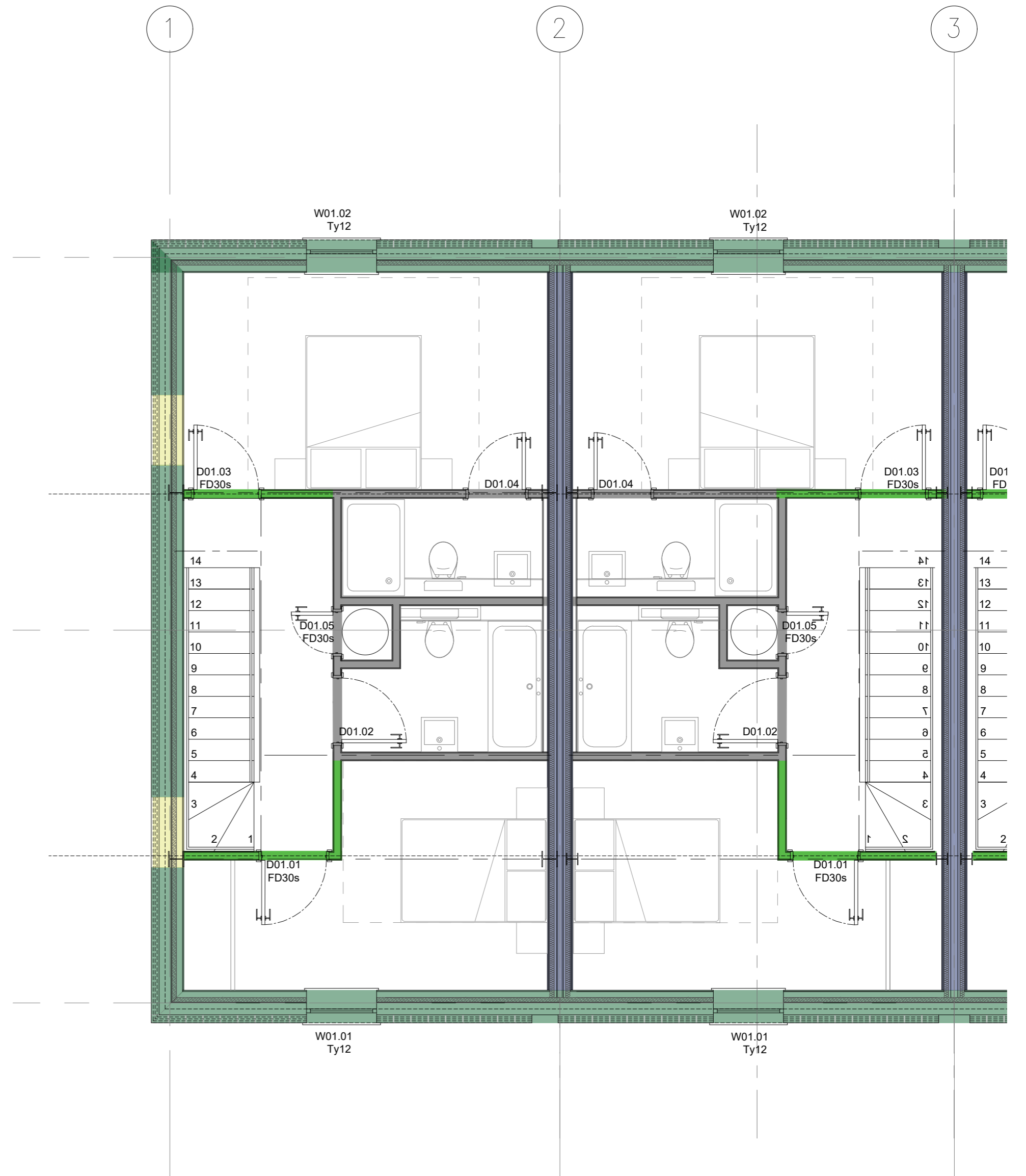
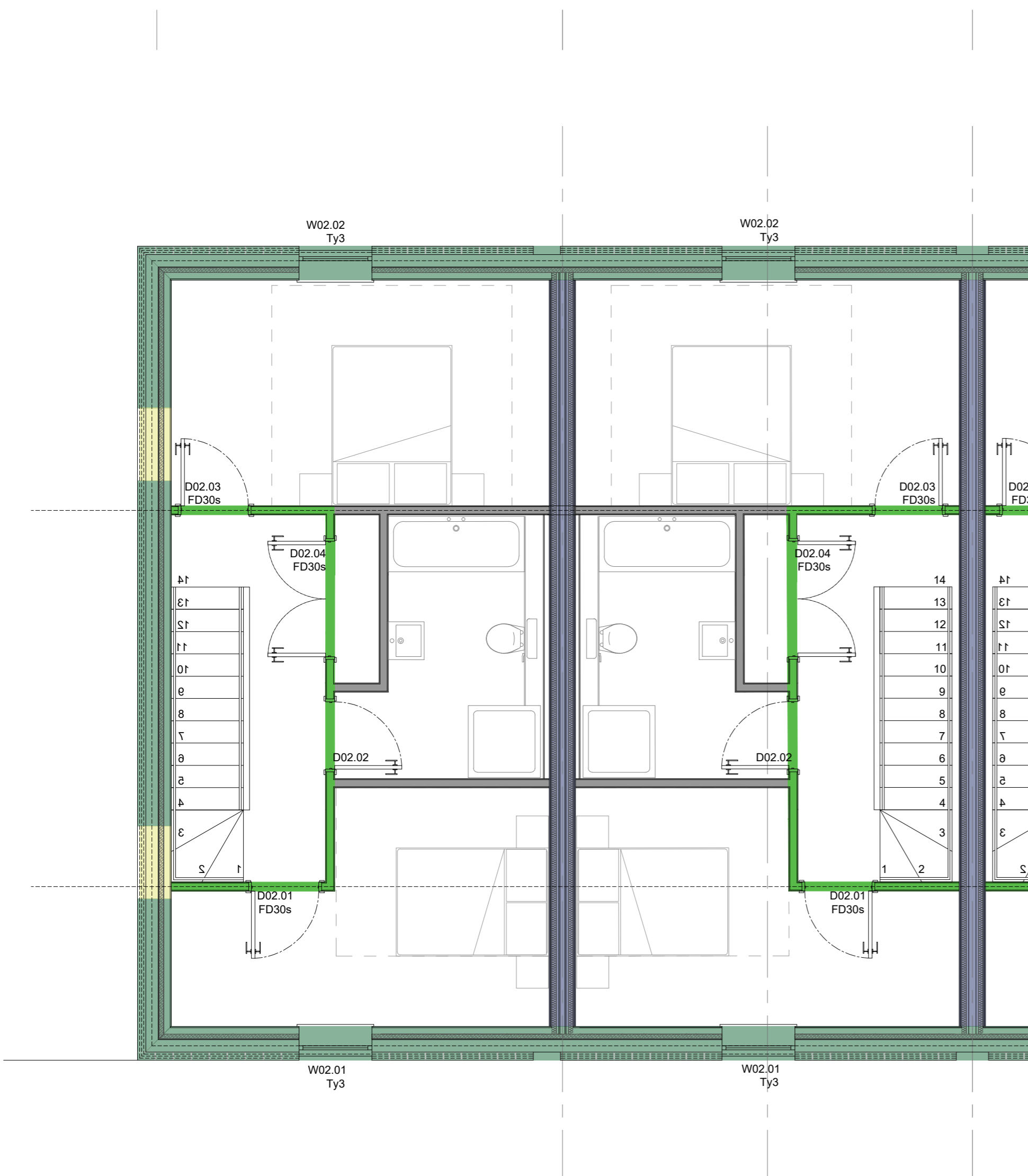


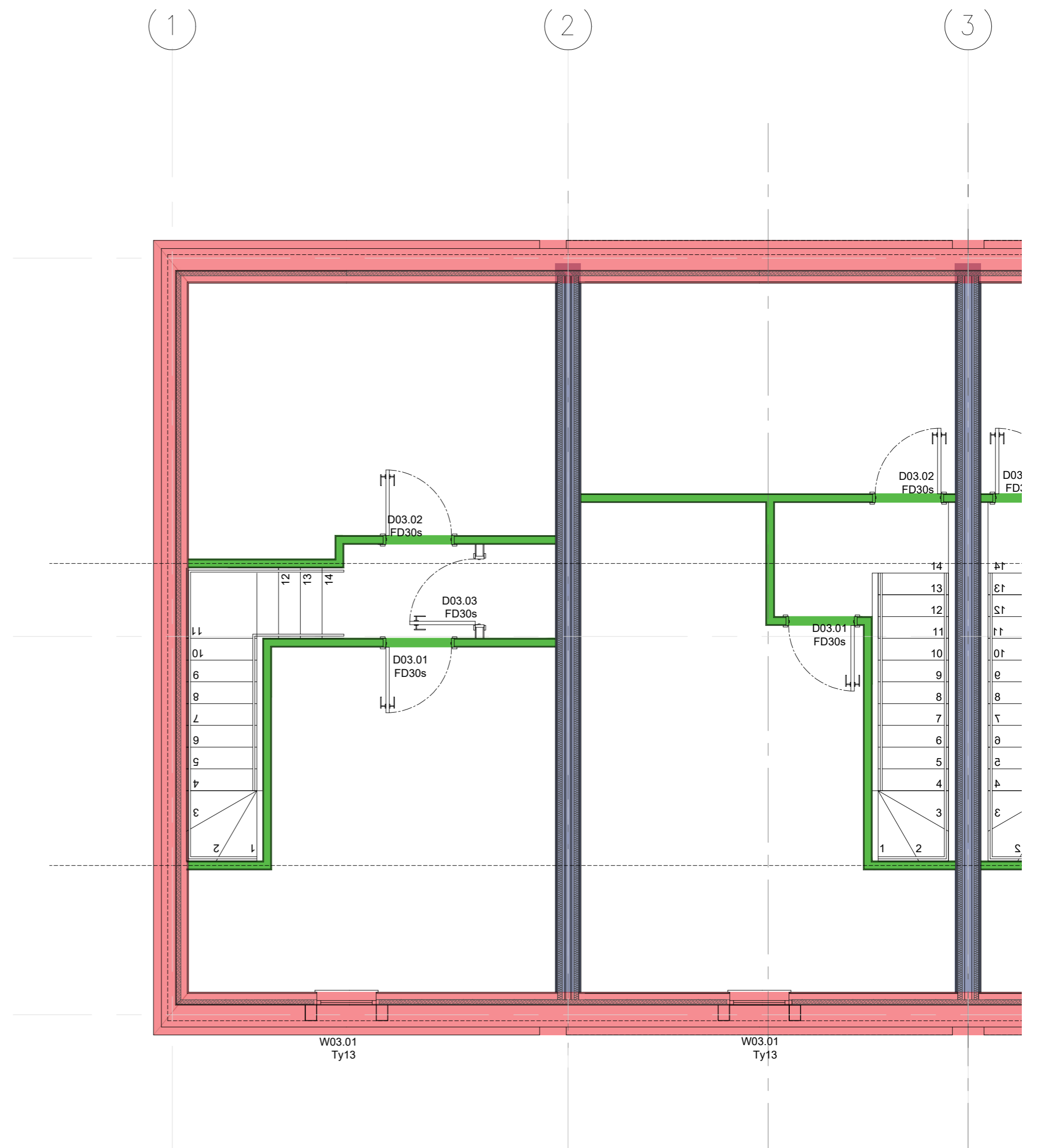
GROUND FLOOR PLAN @ 1:50



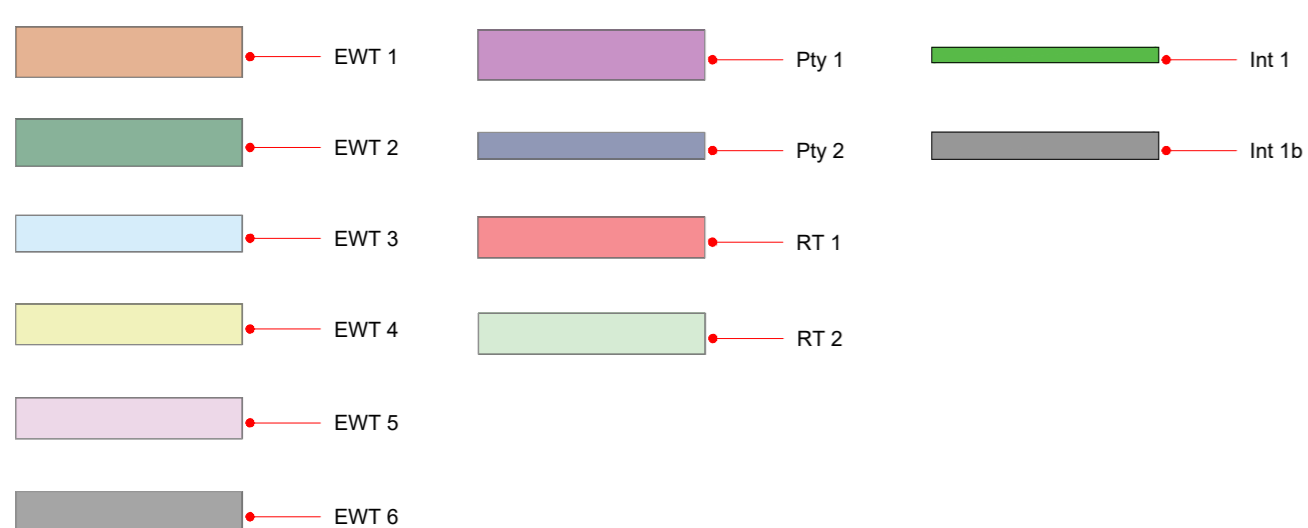
FIRST FLOOR PLAN @ 1:50 (with supporting steelwork shown below)



SECOND FLOOR PLAN @ 1:50



THIRD FLOOR PLAN @ 1:50



# Hollaway

00 For Information 20.09.21 SS

London | 30a Acton Street | London | WC2H 9PG  
 T +44 (0) 20 7096 5425 | E london@hollawaystudio.co.uk | www.hollawaystudio.co.uk  
 Kent | The Tramway Studios | Rampart Road | Hythe | Kent | CT21 5BG  
 T +44 (0)1303 260 313 | E kent@hollawaystudio.co.uk | www.hollawaystudio.co.uk

Project | Royal Victoria Hospital  
 Client | RVH Folkestone Ltd  
 Title | House Type 1 - Wall types plans  
 Status | FOR INFORMATION

Scale @ A1 | 1:50 Date | 06.09.21 Drawn | SS Chk'd | SS

Project Number Drawing Number Revision  
 18.140-A-H1-100.010 00  
 Bim Number