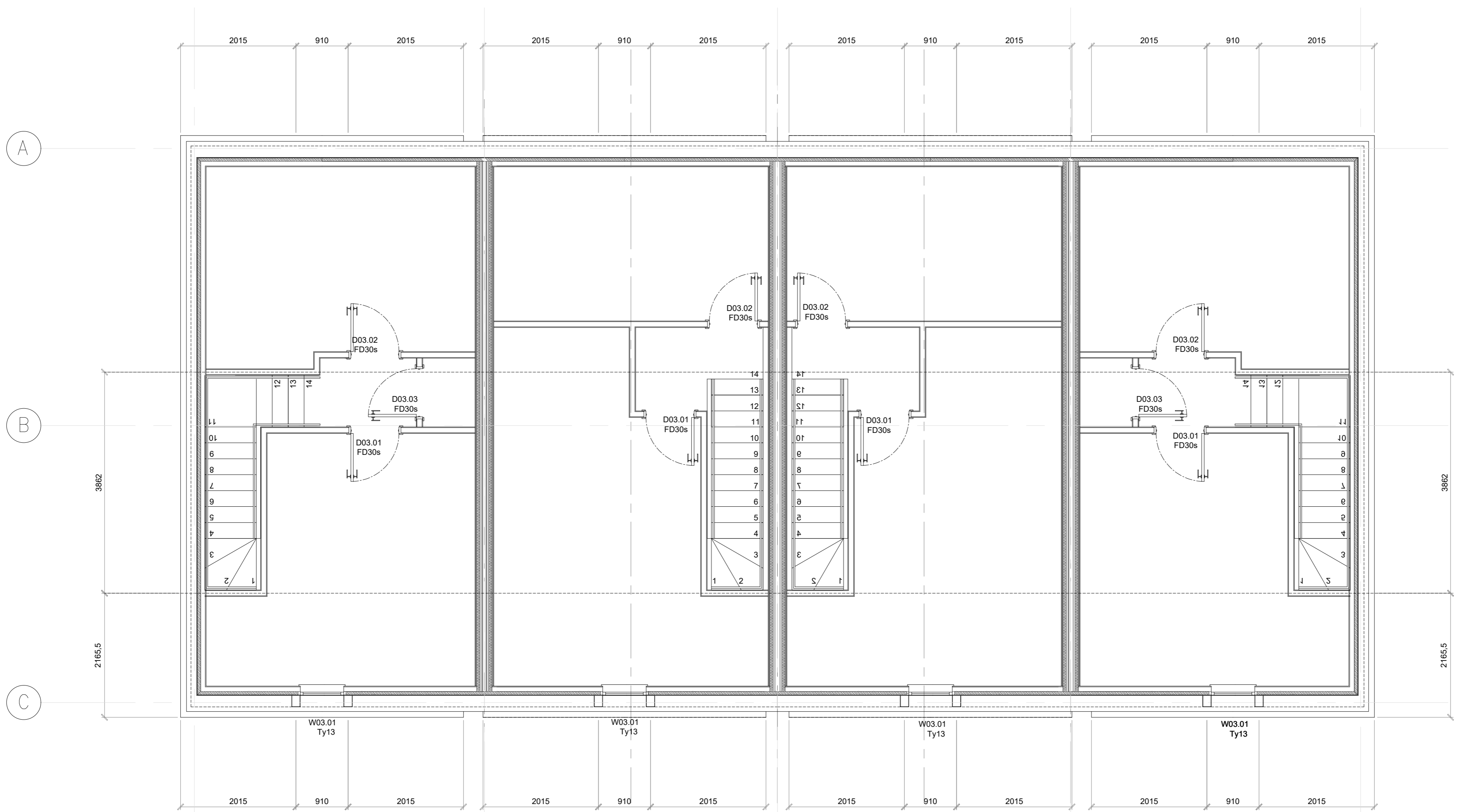


ROOF PLAN @ 1:50



THIRD FLOOR PLAN @ 1:50



Hollaway

00 For information 20.09.21 SS

London 10a Acton Street London WC1X 9NS
 T +44 (0) 20 7096 8420 E London@hollawaystudio.co.uk W www.hollawaystudio.co.uk
 Kent The Tramway Stables Rampart Road Bythe Kent CT21 590
 T +44 (0)1303 269 515 E kent@hollawaystudio.co.uk W www.hollawaystudio.co.uk

Project | Royal Victoria Hospital
 Client | RVH Folkestone Ltd
 Title | House Type 1 - GAs 3
 Status | FOR INFORMATION
 Scale@A1 | 1:50 Date | 15.09.21 Drawn | SS Chk'd | MP

Project Number Drawing Number Revision
 18.140-A-H1-100.02 00
 Bim Number