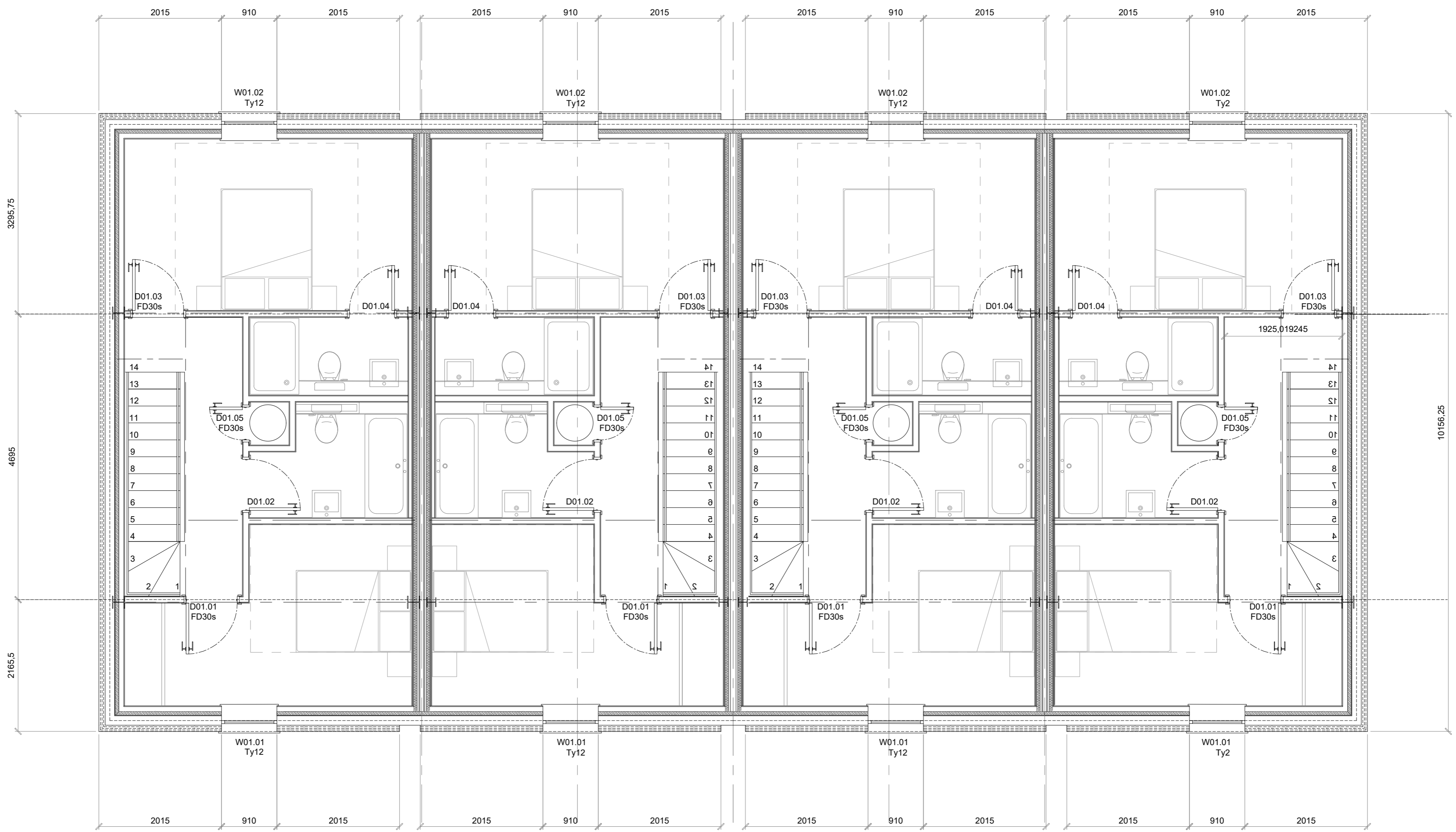


SECOND FLOOR PLAN @ 1:50



FIRST FLOOR PLAN @ 1:50 (with supporting steelwork shown below)

Hollaway

00 For information 20.09.21 SS

London | 30a Acton Street | London | WC2H 9HG
 T +44 (0) 20 7096 5425 | E london@hollawaystudio.co.uk | www.hollawaystudio.co.uk
 Kent | The Tramway Studios | Rampart Road | Hythe | Kent | CT21 5BG
 T +44 (0)1303 260 313 | E kent@hollawaystudio.co.uk | www.hollawaystudio.co.uk

Project | Royal Victoria Hospital
 Client | RVH Folkestone Ltd
 Title | House Type 1 - GAs 2
 Status | FOR INFORMATION

Scale | A1 | 1:50 Date | 30.03.21 Drawn | MP Chk'd | MP

Project Number | Drawing Number | Revision
 18.140-A-H1-100.001 00
 Bim Number

