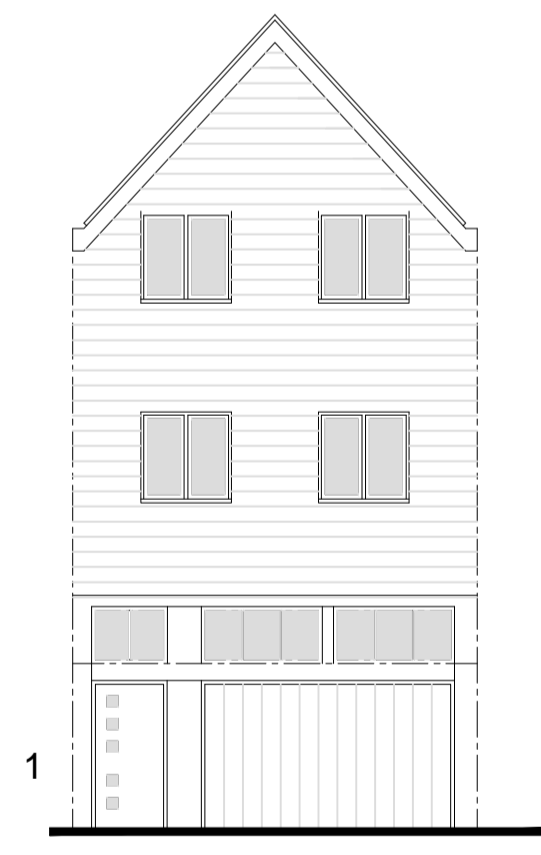
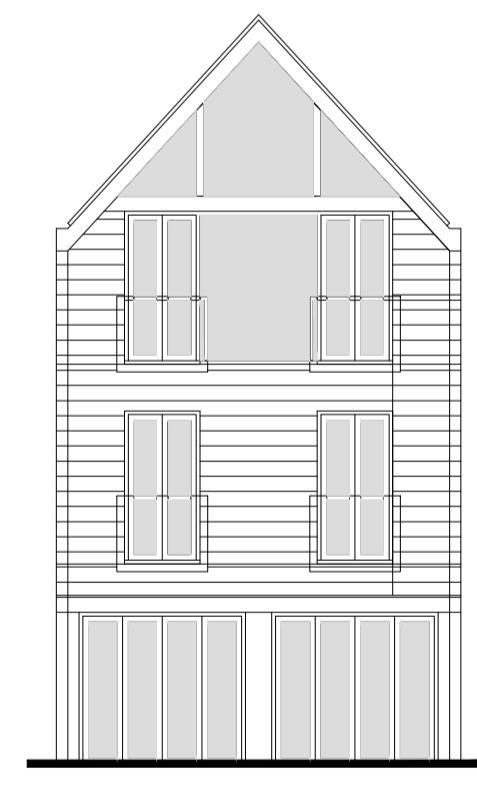
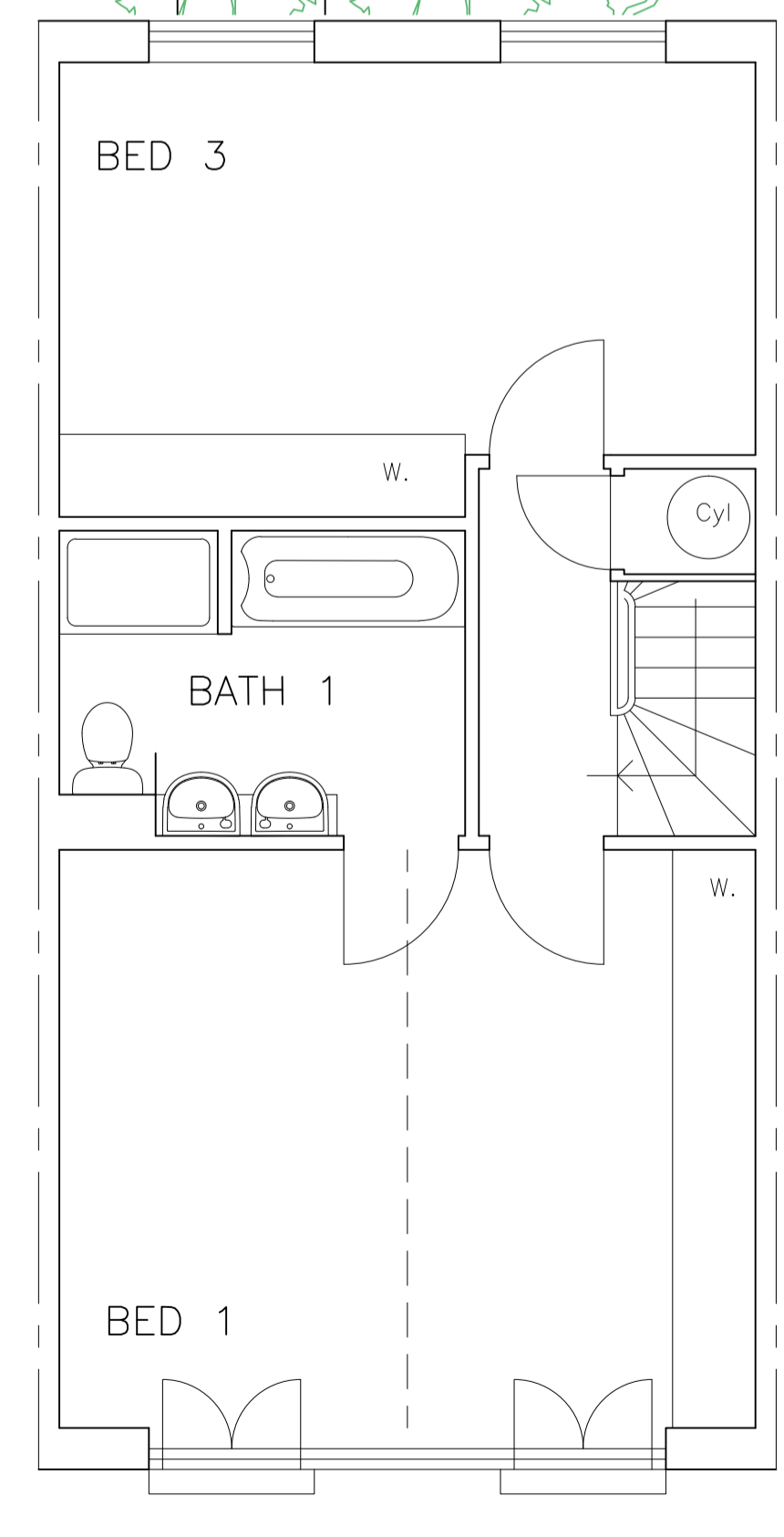
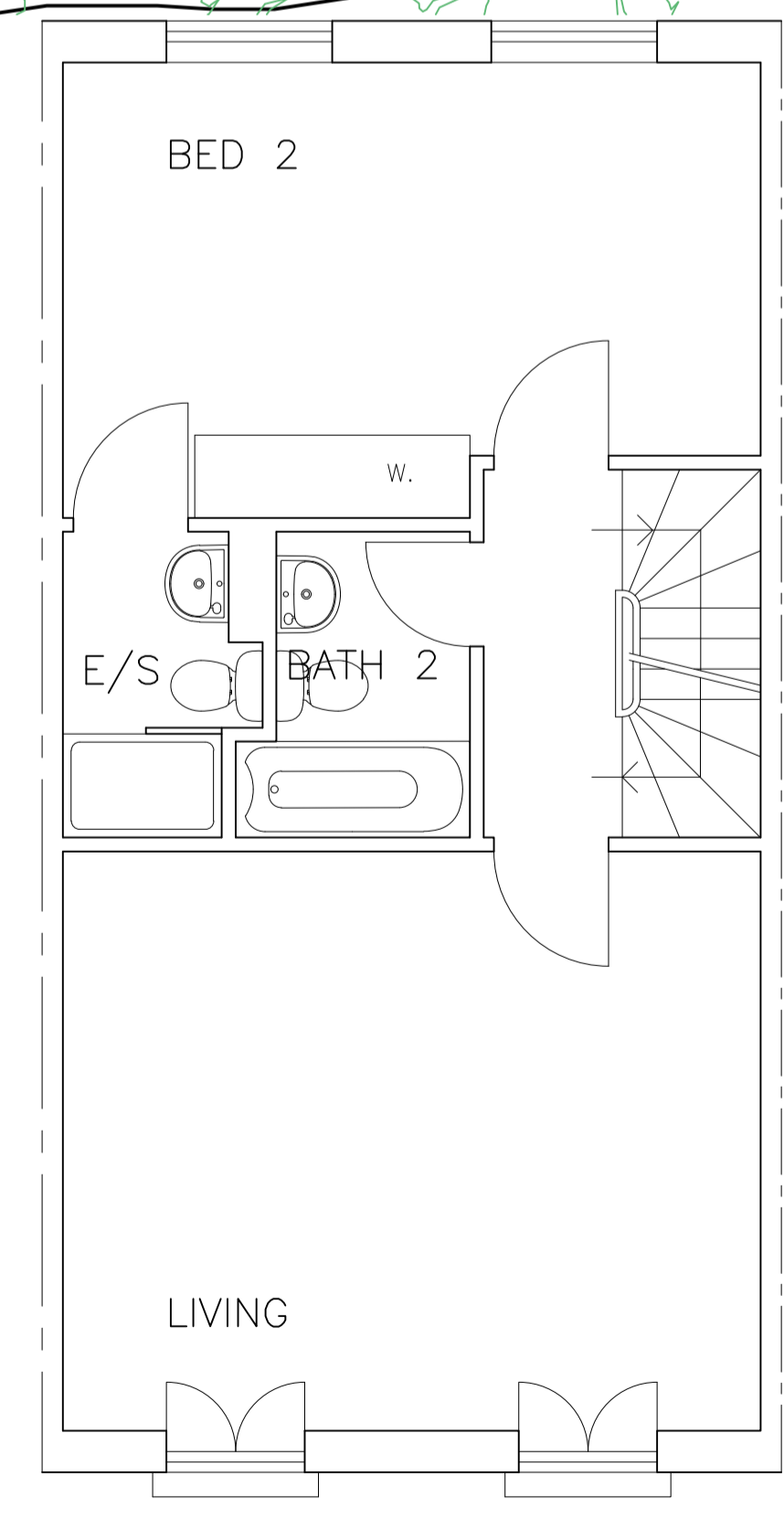
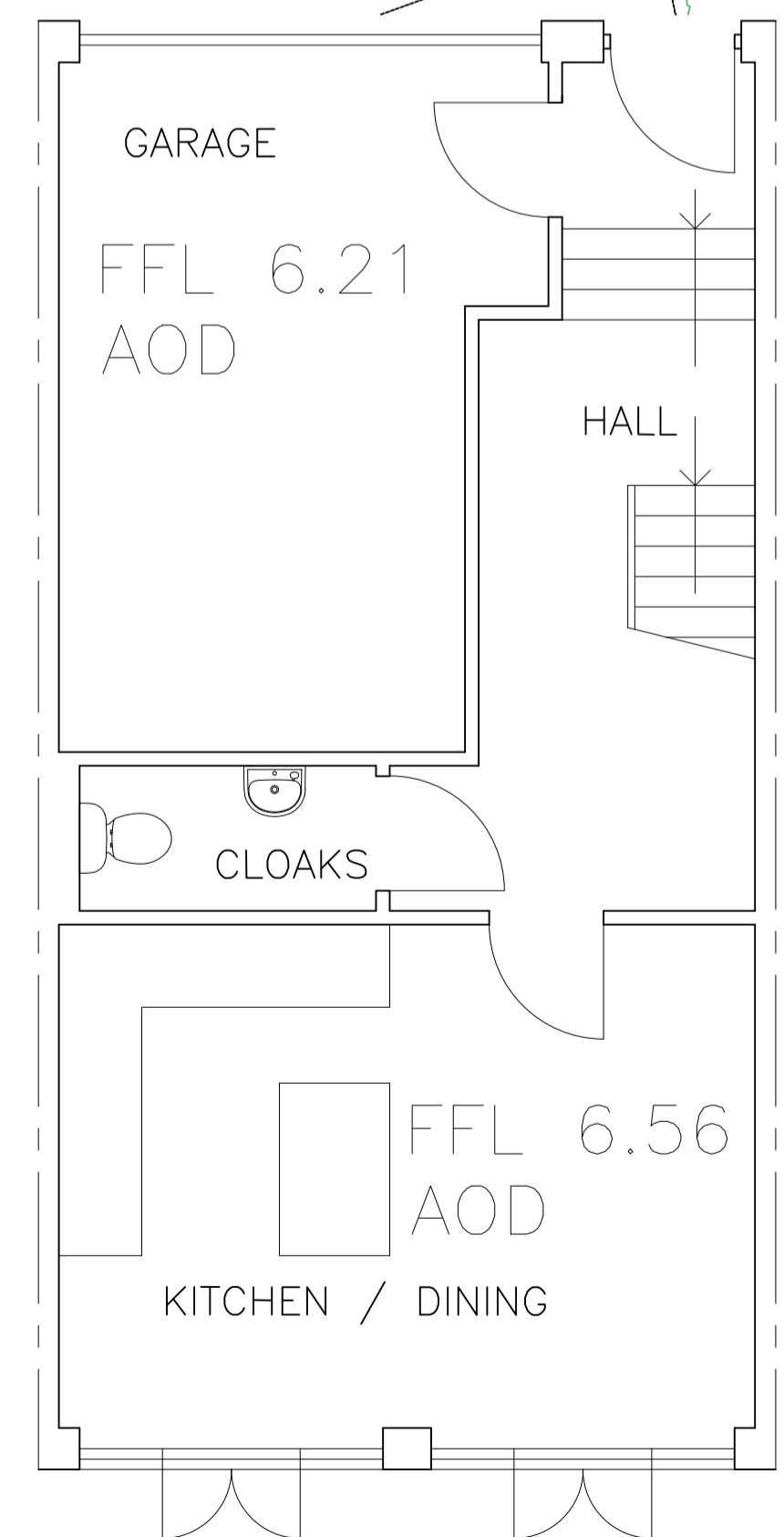


Notes
 1. This drawing is the property of GBA Designs Limited. Copyright is reserved by them and this drawing is issued on the condition that it is not reproduced or copied in part or in whole without their written consent. Do not scale from this drawing. All dimensions to be checked on site before commencement of work. This drawing is to be read in conjunction with specifications and/or other consultants drawings as applicable.



Rear (River) Elevations 1:100

Front (Forstal Road) Elevation



REV.	DESCRIPTION	DATE
K	Towpath width confirmed	08.11.17
J	Gates omitted, access altered	02.8.17
H	Level altered	17.7.17
G	Parking, egress and bins altered	19.1.17
F	Site lines added	11.8.16
E	Elevations update	11.5.16
D	Housing scheme altered	24.1.16
C	General amendment	19.1.16
B	General amendment	12.1.16

architectural & interior designers
 Suite 18/70 Churchill Square Business Centre
 Kings Hill-Kent
 ME19 4YU
 tel:01732623521 fax:01732623522 email:info@gbadesigns.com



proposed development at:
Phoenix House
 Aylesford, Kent, ME20 7AU

Proposed Housing

SCALE DATE: DWG NO.
 1:50/100/200 @A1 Dec 15 PHA/101K

