

Tree Number	Common Species Name	Height (m)	Trunk Diameter (mm)	Crown Spread (m)				Height of Crown Clearance (m)	Age Class	Physiological Condition	Structural Condition	BS5837 Category	Comments/Preliminary Management Recommendations	RPA Radius (m)	Root Protection Area (m2)
				N	E	S	W								
T1	Rowan	4m	60	0.50	0.50	0.50	0.50	2.00	Young	Good	Good	C1	New planting	.7	2
T2	Sycamore	9m	245	3.50	3.00	3.00	2.50	0.50	Early-mature	Fair	Fair	C1	Multi stemmed from 1m, field boundary tree, concrete footpath to the North	2.9	27
T3	Whitebeam	4m	90	1.00	1.50	1.00	0.50	2.50	Young	Good	Fair	C1	Newly planted, leaning East, stakes and tie still attached	1.1	4
T4	Sycamore	4m	60	1.00	1.50	1.00	0.50	1.50	Young	Good	Fair	C1	Newly planted, leaning, leaning northeast	.7	2
T5	Sycamore	11m	530	6.00	5.00	5.00	5.00	4.00	Mature	Fair	Fair	B1. 2	Planted directly adjacent highway, multiple pruning wounds on trunk, epicormic growth on trunk, some deadwood	6.4	127
T6	Whitebeam	7m	390	4.00	4.00	3.00	3.50	1.50	Early-mature	Good	Good	B1. 2		4.7	69
T7	Common ash	11m	470	7.00	7.00	6.00	6.00	3.00	Early-mature	Good	Fair	B1. 2		5.6	100

Tree Number	Common Species Name	Height (m)	Trunk Diameter (mm)	Crown Spread (m)				Height of Crown Clearance (m)	Age Class	Physiological Condition	Structural Condition	BS5837 Category	Comments/Preliminary Management Recommendations	RPA Radius (m)	Root Protection Area (m2)
				N	E	S	W								
T8	Sycamore	10m	410	4.00	5.00	4.00	3.00	2.50	Early-mature	Fair	Fair	B1. 2	Asymmetric canopy, multiple pruning wounds on trunk, epicormic shoots on trunk	4.9	76
T9	Whitebeam	7m	390	3.50	4.00	3.00	3.50	1.00	Early-mature	Good	Fair	B1. 2	Multiple pruning wounds on trunk, wounds from broken branches, epicormic shoots on trunk	4.7	69
T10	Sycamore	9m	350	3.00	3.50	4.00	3.00	3.50	Early-mature	Good	Fair	B1. 2	Multiple pruning wounds on trunk, epicormic shoots on trunk	4.2	55
T11	Lombardy poplar	19m	700	5.00	4.00	2.00	3.00	0.50	Early-mature	Good	Fair	B1. 2	Epicormic shoots on trunk, deadwood	8.4	222
T12	Sycamore	10m	360	6.00	5.00	3.50	4.50	3.50	Early-mature	Good	Fair	B1. 2	Multiple pruning wounds on trunk	4.3	59
T13	Lime	8m	470	6.00	5.00	3.00	4.50	2.50	Early-mature	Good	Fair	B1. 2	Multiple pruning wounds and broken branch wounds	5.6	100
T14	Whitebeam	8m	330	4.00	3.50	3.50	3.00	1.50	Early-mature	Good	Fair	B1. 2	Multiple pruning wounds on trunk, asymmetric canopy	4.0	49

Tree Number	Common Species Name	Height (m)	Trunk Diameter (mm)	Crown Spread (m)				Height of Crown Clearance (m)	Age Class	Physiological Condition	Structural Condition	BS5837 Category	Comments/Preliminary Management Recommendations	RPA Radius (m)	Root Protection Area (m2)
				N	E	S	W								
T15	Hornbeam	2m	30	0.50	0.50	0.50	0.50	0.50	Young	Fair	Fair	C1. 2	Newly planted, central leader dead, Formative prune	.4	0
T16	Common hawthorn	6m	224	4.00	3.00	3.00	3.50	0.50	Early-mature	Fair	Fair	C1. 2	Field boundary tree, heavily ivy covered	2.7	23
T17	Common hawthorn	4m	200	2.50	3.00	2.00	1.50	0.50	Early-mature	Fair	Fair	C1. 2	Field boundary tree, heavily ivy covered	2.4	18
T18	Sycamore	17m	800	8.00	10.00	9.00	7.00	0.50	Mature	Fair	Fair	B1. 2	On field boundary with public footpath at base, multi stemmed from ground level	9.6	289
T19	Common ash	10m	600	5.00	6.00	5.00	6.00	2.00	Early-mature	Fair	Fair	B1. 2	Located on field boundary, public footpath at base of trunk, restricted inspection due to heavy ivy cover	7.2	163
T20	Common ash	9m	269	6.50	3.50	5.00	4.00	3.00	Early-mature	Fair	Poor	C1. 2. 3	Located on field boundary, public footpath at base of trunk, restricted inspection due to heavy ivy cover, multi stemmed from ground level, inonotus hispidus fruit body at 2m on trunk	3.2	33
T21	Common ash	11m	600	6.00	5.50	5.50	6.00	3.00	Early-mature	Fair	Fair	B1. 2	Located on field boundary, public footpath at base of trunk, restricted inspection due to heavy ivy cover	7.2	163

Tree Number	Common Species Name	Height (m)	Trunk Diameter (mm)	Crown Spread (m)				Height of Crown Clearance (m)	Age Class	Physiological Condition	Structural Condition	BS5837 Category	Comments/Preliminary Management Recommendations	RPA Radius (m)	Root Protection Area (m2)
				N	E	S	W								
T22	Sycamore	13m	400	5.00	1.00	6.00	5.00	3.50	Early-mature	Fair	Fair	C1. 2	Field boundary tree, in group of three trees, etiolated growth, restricted inspection due to heavy ivy cover	4.8	72
T23	Sycamore	13m	450	6.00	3.00	8.00	4.00	3.00	Early-mature	Fair	Fair	C1. 2	Field boundary tree, in group of three trees, etiolated growth, restricted inspection due to heavy ivy cover	5.4	92
T24	Sycamore	13m	500	6.00	4.50	7.00	4.00	2.00	Early-mature	Fair	Fair	C1. 2	Field boundary tree, in group of three trees, etiolated growth, restricted inspection due to heavy ivy cover	6.0	113
T25	Sycamore	15m	650	6.00	6.00	6.00	6.00	3.00	Early-mature	Fair	Fair	B1. 2	Restricted access off-site tree in private property	7.8	191
T26	Common walnut	13m	862	7.00	7.00	8.00	5.00	2.00	Mature	Fair	Fair	B1. 2	Multi stemmed, restricted access off-site tree in private property	10.3	336
T27	Horse chestnut	10m	424	5.00	1.00	4.00	3.00	3.00	Early-mature	Fair	Fair	C1. 2	Restricted inspection due to heavy ivy cover, restricted access off-site tree in private property	5.1	81
T28	Horse chestnut	10m	424	5.00	4.00	4.00	1.00	3.00	Early-mature	Fair	Fair	C1. 2	Mutually etiolated, restricted access off-site tree in private property	5.1	81

Tree Number	Common Species Name	Height (m)	Trunk Diameter (mm)	Crown Spread (m)				Height of Crown Clearance (m)	Age Class	Physiological Condition	Structural Condition	BS5837 Category	Comments/Preliminary Management Recommendations	RPA Radius (m)	Root Protection Area (m2)
				N	E	S	W								
T29	Leyland cypress	6m	367	4.00	4.00	4.00	4.00	2.00	Early-mature	Good	Fair	C1. 2	Topped with loss of apical dominance, restricted access off-site tree in private property	4.4	61
T30	Cherry laurel	5m	245	2.00	2.00	2.00	2.00	0.50	Early-mature	Good	Fair	C1. 2	Maintained shrub, restricted access off-site tree in private property	2.9	27
T31	Turkey oak	9m	500	5.00	5.00	5.00	5.00	2.00	Early-mature	Fair	Fair	C1. 2	Restricted inspection due to fence, multi stemmed from 2m, restricted access off-site tree in private property	6.0	113
T32	Sycamore	8m	250	4.00	4.00	4.00	4.00	0.50	Semi-mature	Fair	Fair	C1. 2	Restricted inspection due to heavy ivy cover, etiolated growth, restricted access off-site tree in private property	3.0	28

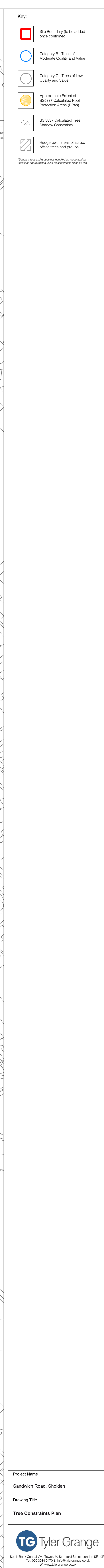
## Plans:



## Plan 1: Tree Constraints Plan (11464/P08)





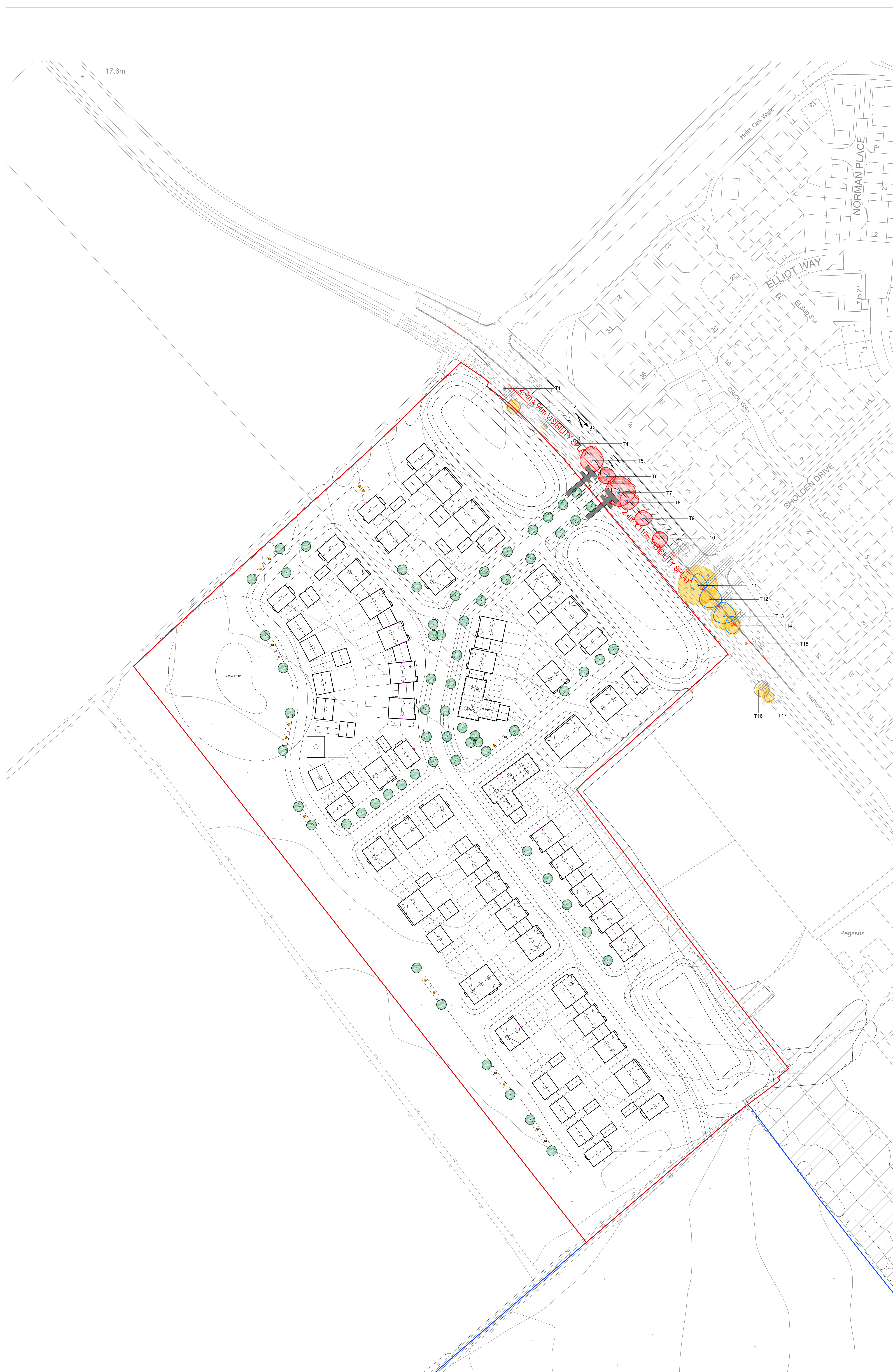




## Plan 2: Preliminary Tree Retention and Removal Plan (11464/P09)








Key:

- Site Boundary (to be added once confirmed)
- Category B: Trees of Moderate Quality and Value
- Category C: Trees of Low Quality and Value
- Approximate Extent of BS5837 Calculated Root Protection Areas (RPAs)
- Proposed Tree Removals
- BS 5837 Calculated Tree Shadow Constraints
- Hedgerows, areas of scrub, off-site trees and groups

\*Devotee trees and groups not detailed on map/plan. Locations approximated using measurements taken on site.

Project Name  
Land South West of Sandwich Road, Sholden

Drawing Title  
**Preliminary Tree Retention and Removal Plan**

**Tyler Grange**  
South Bank Central Way Tower, 20 Stamford Street, London SE1 1PF  
Tel: 020 8556 8471 E: info@tylergrange.co.uk  
W: www.tylergrange.co.uk

Scale 1:500 @ A0	Date 23/02/21
Drawn by RJA	Checked by JJ
Drawing No. 11464P09	Revision A





# Step into our world

[www.tylergrange.co.uk](http://www.tylergrange.co.uk)



**Tyler  
Grange**

**Landscape** | **Ecology** | **Arboriculture**