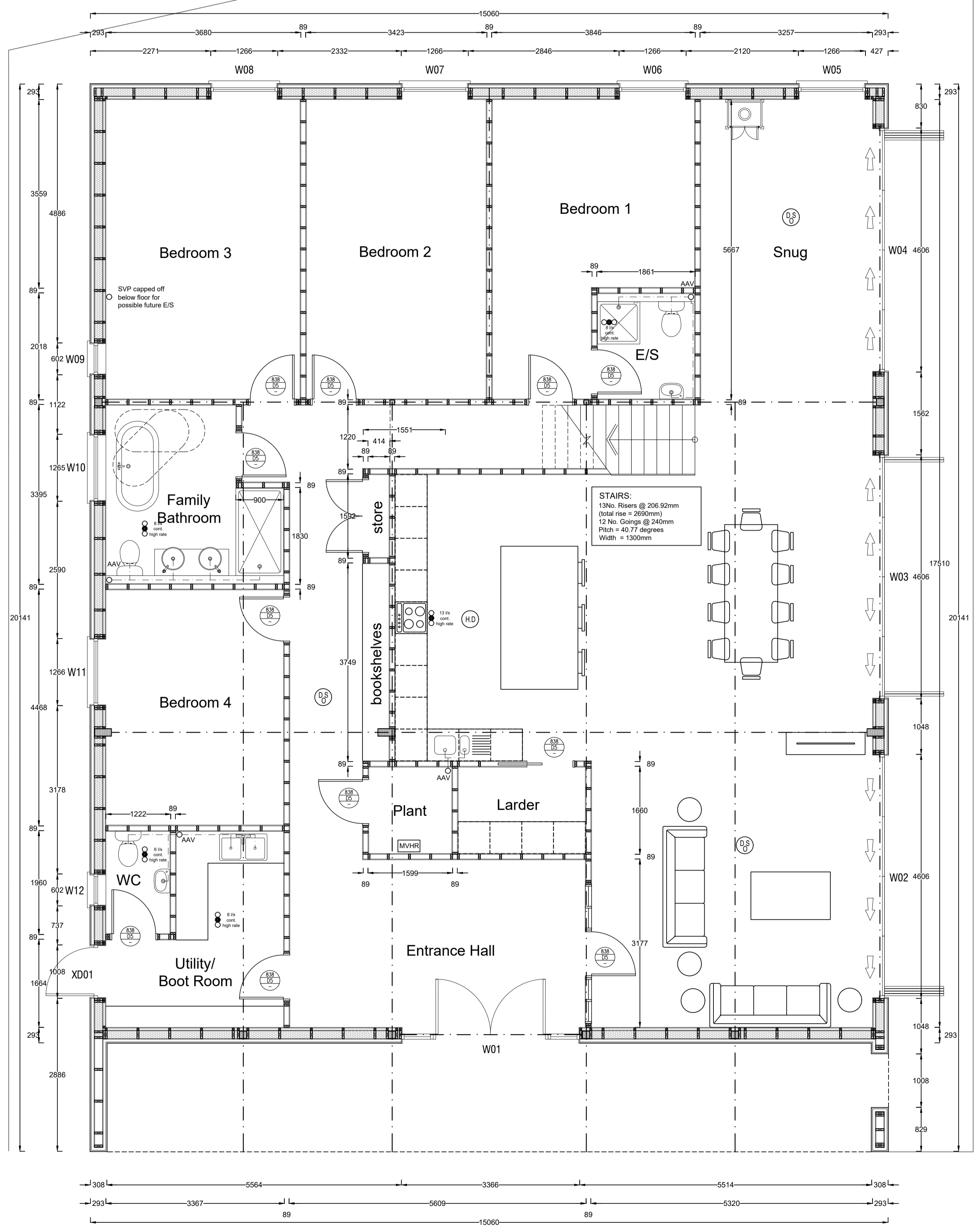


REPRODUCING THESE DRAWINGS BY PRINTING OR COPYING MAY LEAD TO ERRORS. PLEASE REFER TO SCALE BAR. DO NOT SCALE OFF THESE DRAWINGS FOR CONSTRUCTION PURPOSES. IF ANY DISCREPANCIES ARE FOUND, PLEASE CONTACT WESTERN DESIGN ARCHITECTS IMMEDIATELY.



DESIGNERS RISK ASSESSMENT- HEALTH AND SAFETY
THE CONSTRUCTION (DESIGN AND MANAGEMENT) REGULATIONS 2015

A design and risk assessment Drawing CDM01 should form part of our drawing package, if you have not received this from us by post, email or by collection please contact us for a copy before moving forward with the project.

NOTES BUILDING REGULATIONS

1. Please refer to the Drawing Issue Sheet, all Drawings and supporting material should be read together with the Construction Notes
2. Any discrepancies between specification notes and details must be clarified for design intention with WDA before continuing with construction.
3. Note: All materials to be confirmed by fire consultant prior to construction. The above material choices are for planning/aesthetic purposes only and confirmation of fire performance should be agreed with specialist. (fixing system behind cladding should also be non combustible A1 or A2 rated and agreed with fire consultant.)

| | | | | |
|------|---------------------------|----|-----|----------|
| A | Building Regulation Issue | SL | JT | 21.05.24 |
| REV. | REVISION DETAILS | BY | CKD | DATE |



Western Design Architects
12 The Granary, Hinton Business Park, Tanerston, Dorset, DT11 8JF
T: 01258 830675 E: info@westerndesign.co.uk

CLIENT
Mr & Mrs Kedge

PROJECT
Barn at Slyers Lane, Stinsford

DRAWING TITLE
Detailed Ground Floor Plan

| | | |
|------------------|--------------------|--------------------|
| DRAWN BY SL | CHECKED BY JT | DATE 28.02.2024 |
| SCALE 1:50@A1 | JOB NO. 1819150 | |

| | |
|---------------------------|----------------------|
| DRAWING NO. 101 | REVISION A |
|---------------------------|----------------------|

BUILDING REGULATIONS
THIS DRAWING IS COPYRIGHT © Western Design Ltd 2022