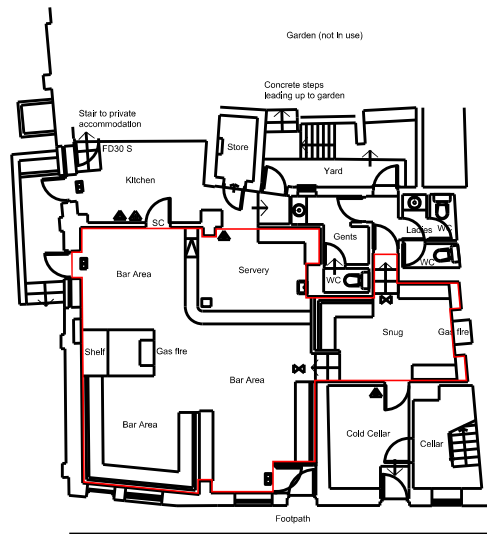


Revisions			
Rev	Description	Date	Initial

THIS DRAWING IS THE PROPERTY OF SHEPHERD NEAME LIMITED AND SHOULD NOT BE COPIED OR REPRODUCED WITHOUT THE WRITTEN CONSENT OF SHEPHERD NEAME LIMITED. ALL CRITICAL DIMENSIONS TO BE CHECKED PRIOR TO FABRICATION, CONSTRUCTION, AND ANY DISCREPANCY REPORTED TO THE PROJECT MANAGER.  
DO NOT SCALE FROM THIS DRAWING.



FIRE FIGHTING LEGEND	
FB	Door provided with 'Push Bar' mechanism
PP	Door provided with 'Push Pad' mechanism
S	Door fitted with Intumescent smoke seals
FD40	Door assembly to resist the passage of fire for 40 minutes
FD30	Door assembly to resist the passage of fire for 30 minutes
SC	Door fitted with self-closing mechanism
KLS	'Keep locked shut sign'
S22	Burning man sign
S20	'Fire door keep clear sign'
E	Fire exit sign
VP	Vision Panel in Door
D4	Non-maintained emergency escape light
M4	Maintained emergency escape light
A	Area covered by automatic heat detection
B	Area covered by automatic smoke detection
C	Maintained directed illuminated exit light
D	Non-maintained directed illuminated exit light
E	Dry powder fire extinguisher
F	Water fire extinguisher
G	Fire blanket
H	Carbon dioxide extinguisher
I	Fire alarm call point
J	Fire alarm control panel
K	Alarm sounder/bell

<p>17 COURT STREET, FAVERHAM, SUFFOLK, IP20 9JF Tel: 01793 832000 Fax: 01793 832001</p>	<b>Project</b> The Royal Oak, Lower Road, River, Dover	
	<b>Drawing description</b> Ground Floor Plan as Existing	
<b>Rev</b> A3 Issued for Licensing Application	<b>Rev No</b> 1663-01	<b>Rev</b> 2016-06-01
<b>Scale</b> 1:100	<b>Author</b> JRM	<b>Date</b> 2016-06-01